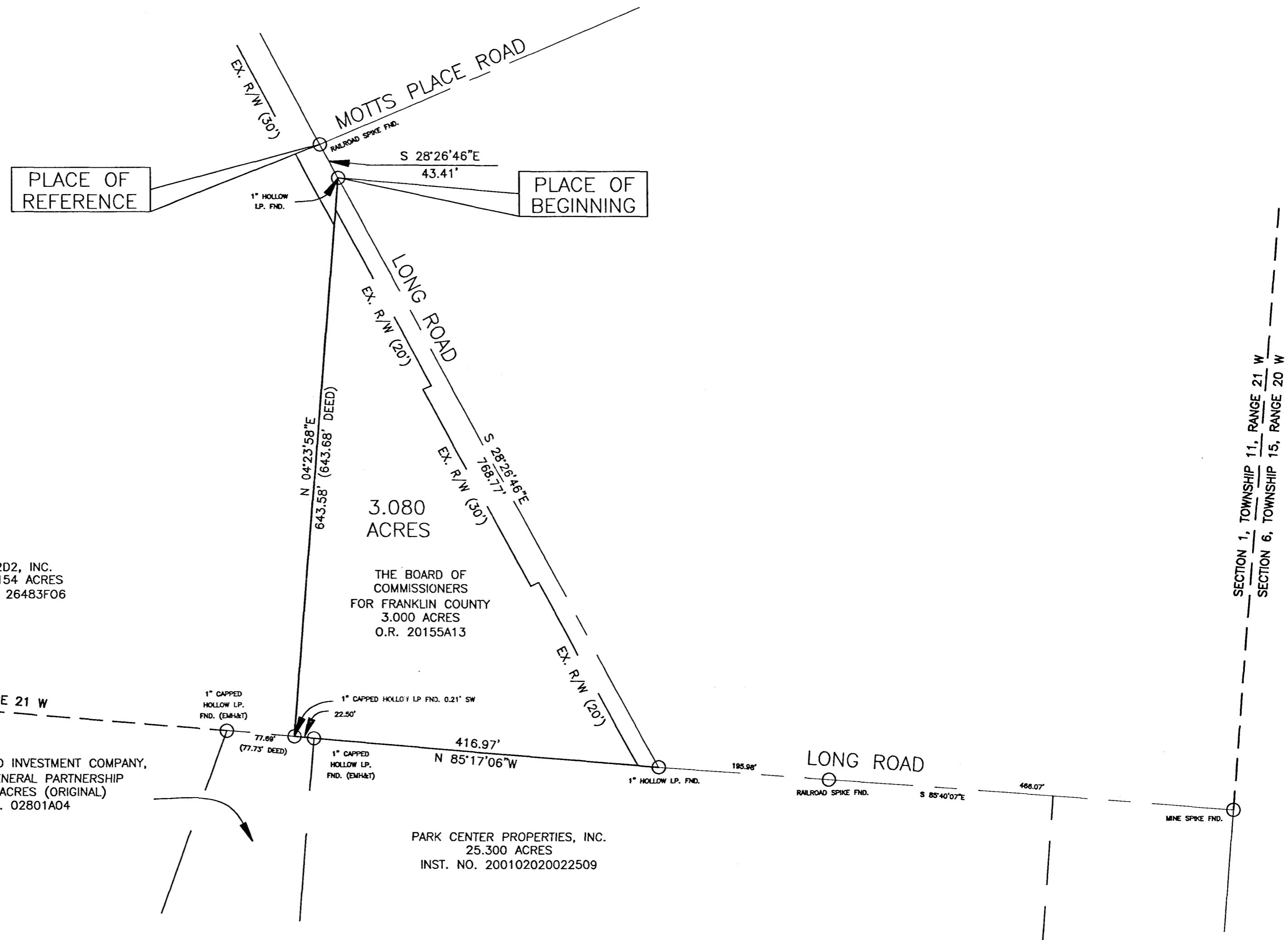


SURVEY OF A 3.080 ACRE TRACT
SECTION 1, TOWNSHIP 11 NORTH, RANGE 21 WEST
CONGRESS LANDS
 CITY OF COLUMBUS, FRANKLIN COUNTY, OHIO



LEGEND

- CENTERLINE _____
- SECTION LINE - - - - -
- BOUNDARY LINE _____
- RIGHT OF WAY _____
- ADJOINER LINE - - - - -

R2D2, INC.
24.154 ACRES
O.R. 26483F06

THE BOARD OF COMMISSIONERS
FOR FRANKLIN COUNTY
3.000 ACRES
O.R. 20155A13

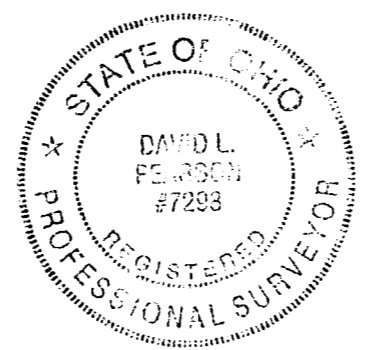
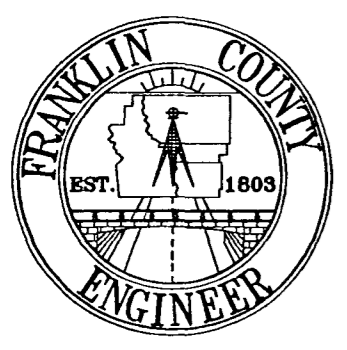
COLUMBUS LAND INVESTMENT COMPANY,
AN OHIO GENERAL PARTNERSHIP
169.606 ACRES (ORIGINAL)
O.R. 02801A04

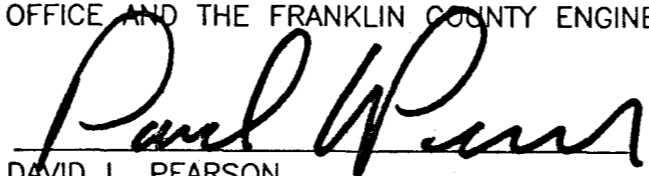
PARK CENTER PROPERTIES, INC.
25.300 ACRES
INST. NO. 200102020022509

BASIS OF BEARINGS:

BEARINGS ARE BASED ON THE BEARING (S 85°40'07" E) AS SHOWN ALONG THE CENTERLINE OF LONG ROAD AS SHOWN IN THE DEED OF RECORD IN INST. NO. 200102020022509 ON RECORD IN RECORDER'S OFFICE, FRANKLIN COUNTY, OHIO.

THIS PLAT WAS PREPARED FROM AN ACTUAL FIELD SURVEY PERFORMED BY THE FRANKLIN COUNTY ENGINEER'S OFFICE, IN APRIL, 2002, ALONG WITH PUBLIC RECORDS ON FILE IN THE FRANKLIN COUNTY RECORDER'S OFFICE AND THE FRANKLIN COUNTY ENGINEER'S OFFICE




 DAVID L. PEARSON
 OHIO REGISTERED SURVEYOR NO. 7298

DATE 4/03/2002

DATE: 3, APRIL 2002	DRAWING: 530-166399	
	DRAWN BY: FAR	
REVISIONS		
DATE	DESCRIPTION	BY