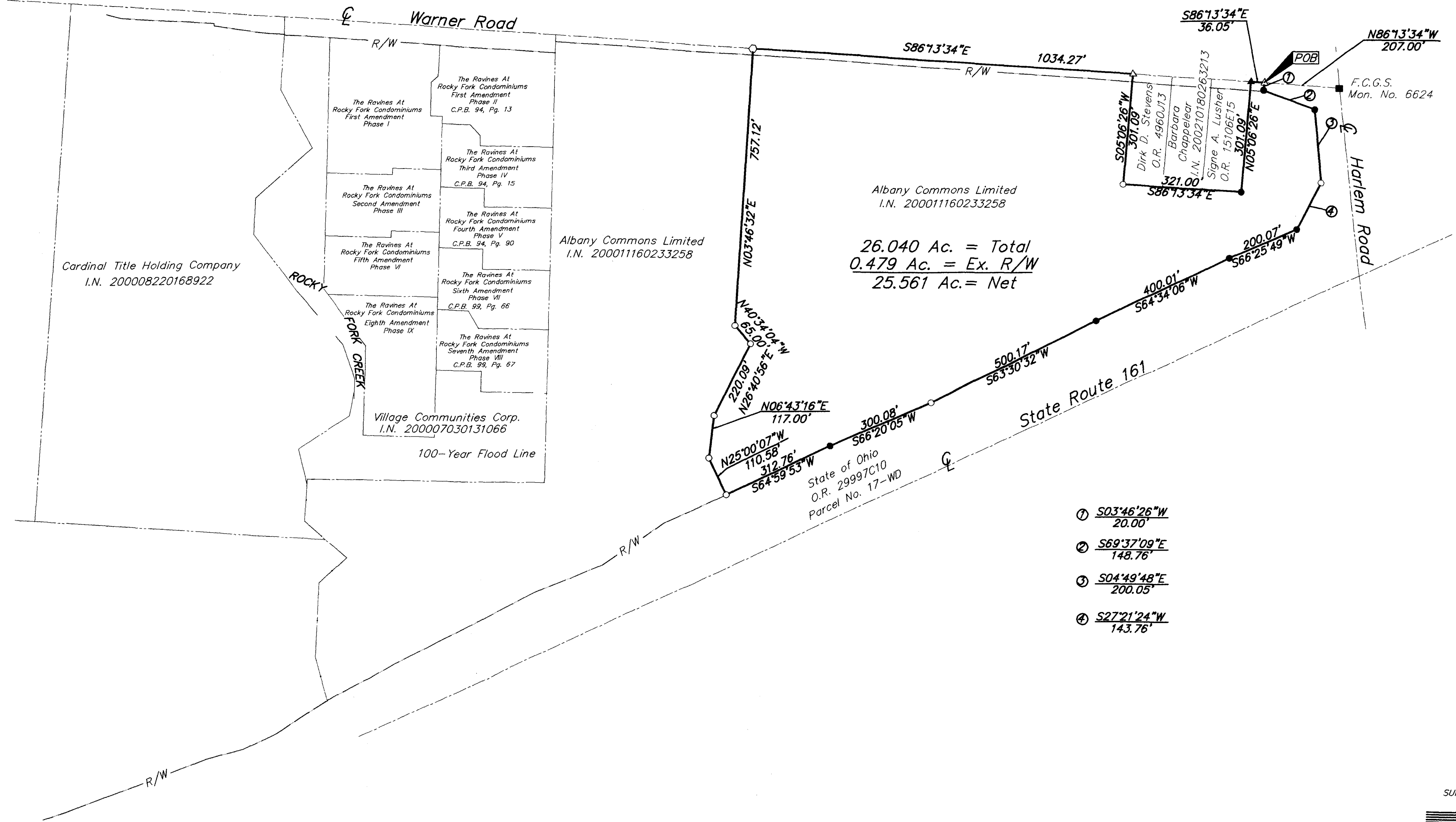
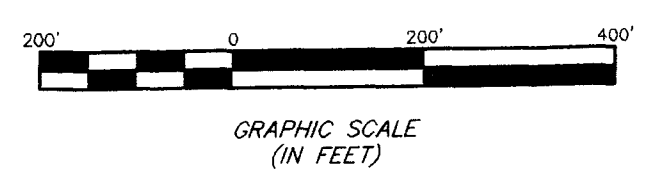


**SURVEY OF ACREAGE PARCEL**  
**QUARTER TOWNSHIP 3, TOWNSHIP 2, RANGE 16**  
**UNITED STATES MILITARY LANDS**  
**CITY OF COLUMBUS, FRANKLIN COUNTY, OHIO**



- ① S03°46'26"W  
20.00'
- ② S69°37'09"E  
148.76'
- ③ S04°49'48"E  
200.05'
- ④ S27°21'24"W  
143.76'



- = MON. FND.
- = I.P. FND.
- = I.P. SET
- = MAG. NAIL FND.
- = MAG. NAIL SET
- ▲ = R.R. SPK. FND.
- △ = R.R. SPK. SET
- = P.K. NAIL FND.

I.P.S Set are 13/16" I.D. Iron pipe w/ cap inscribed EMHT INC



SURVEYED & PREPARED  
BY  
**EMHT**  
 INC.  
 CONSULTING ENGINEERS & SURVEYORS  
 170 MILL STREET  
 GAHANNA, OHIO 43230  
 (614) 471-5150

By Matthew A. Kirk  
 Professional Surveyor No. 7865

SCALE: 1" = 200'      OCTOBER 30, 2002

Q:\PROJECT\20020847.DWG:20847AS2.DWG - O.KRES: - PLOTTED BY JMACLEAN - October 30, 2002 - 1:36 PM

Basis of Bearings for this drawing is based on the Ohio State Plane Coordinate System as per NAD 83. Control for Bearings was from coordinates of Monuments Frank 78 and 178 established by the Franklin County County Engineering Department.

Kelly/ Albany Commons / 20020847/20847AS