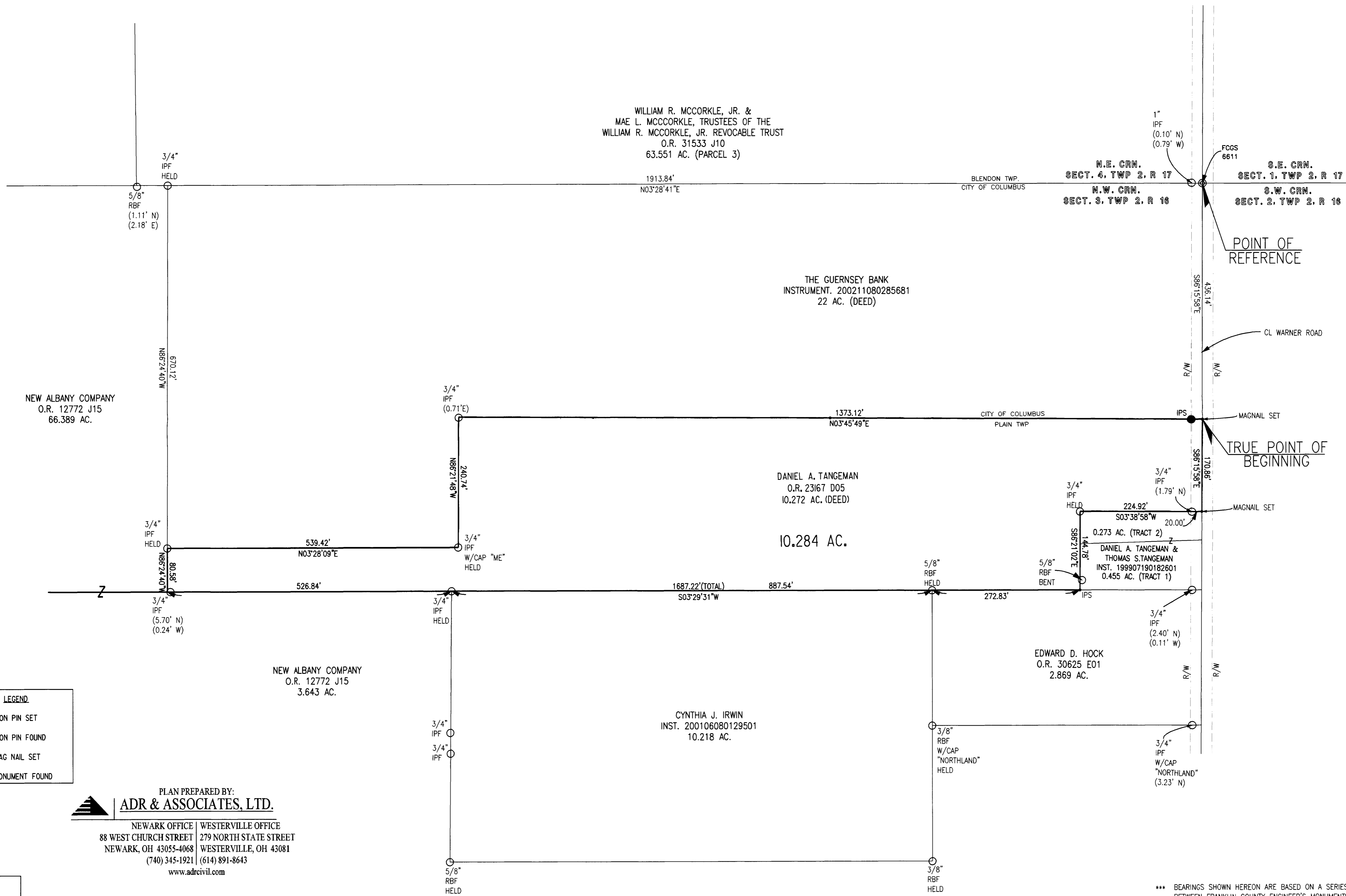
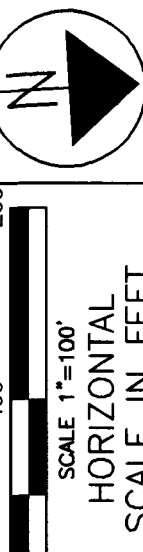


BOUNDARY FOR 10.284 ACRES

STATE OF OHIO, COUNTY OF FRANKLIN, TOWNSHIP OF PLAIN,
SECTION 3, TOWNSHIP 2, RANGE 16, UNITED STATES MILITARY LANDS



- LEGEND**
- = IRON PIN SET
 - = IRON PIN FOUND
 - = MAG NAIL SET
 - ⊙ = MONUMENT FOUND

PLAN PREPARED BY:
ADR & ASSOCIATES, LTD.
NEWARK OFFICE | WESTERVILLE OFFICE
88 WEST CHURCH STREET | 279 NORTH STATE STREET
NEWARK, OH 43055-4068 | WESTERVILLE, OH 43081
(740) 345-1921 | (614) 891-8643
www.adrcivil.com



Robert J. Sands
ROBERT J. SANDS, P.S.
OHIO PROFESSIONAL SURVEYOR # 8053
DATE: 12/19/02

*** BEARINGS SHOWN HEREON ARE BASED ON A SERIES OF GPS OBSERVATIONS BETWEEN FRANKLIN COUNTY ENGINEER'S MONUMENTS 8824 AND 8825 WHICH HAVE A BEARING OF NORTH 86° 29' 25" WEST. GPS OBSERVATIONS WERE MADE ON DECEMBER 12, 2002.
*** ALL IRON PINS SET ARE 5/8" REBAR X 30" REBAR WITH YELLOW CAP STAMPED "ADR"
*** THIS SURVEY IS BASED ON AN ACTUAL FIELD SURVEY CONDUCTED BY ADR & ASSOCIATE, LTD. IN DECEMBER, 2002 UNDER MY DIRECT SUPERVISION

CALCULATED	RJS	RJS
DRAWN	JMT	RJS
	CHECKED	RJS

BOUNDARY

DANIEL A. TANGEMAN
BOUNDARY