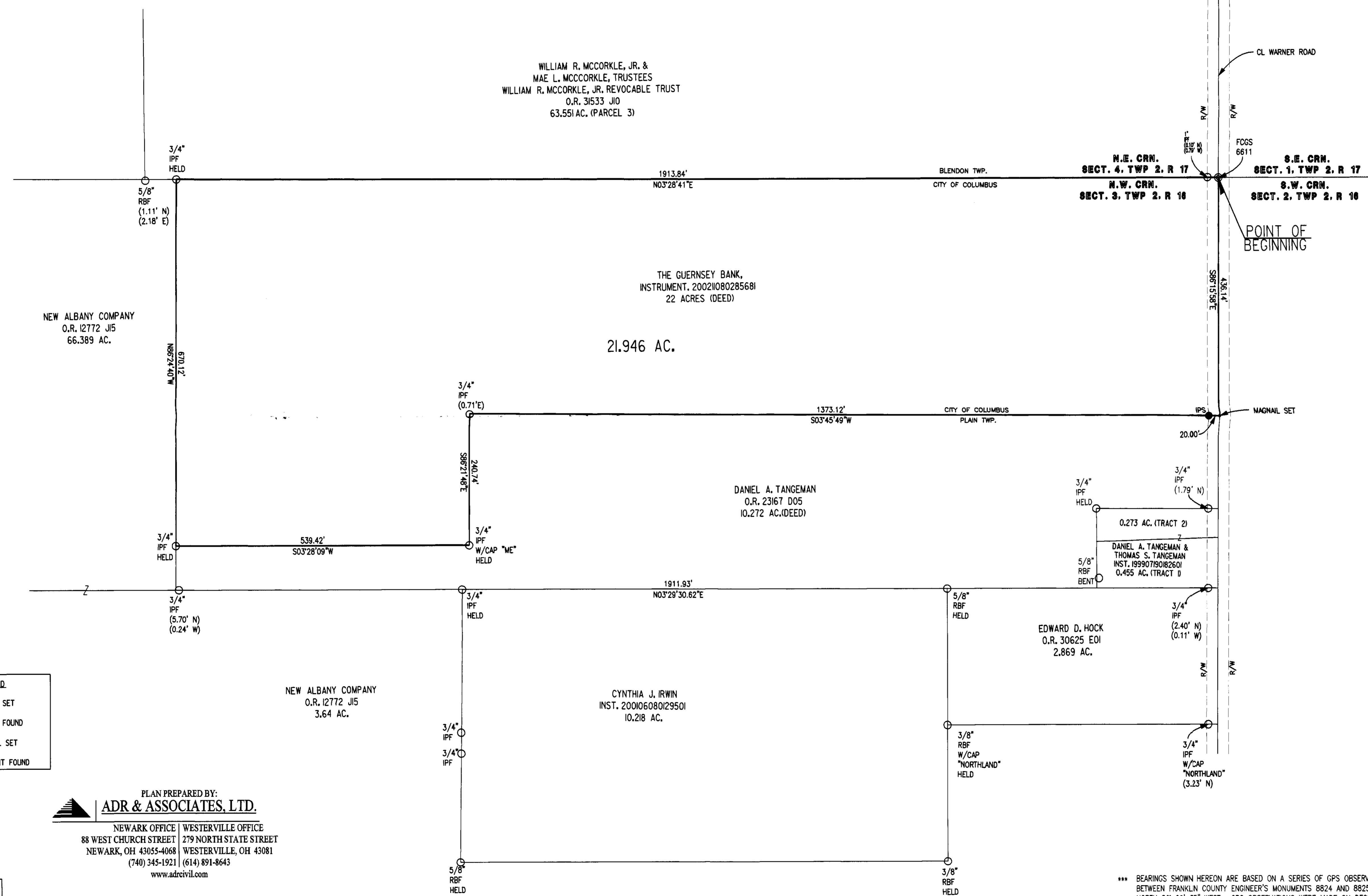
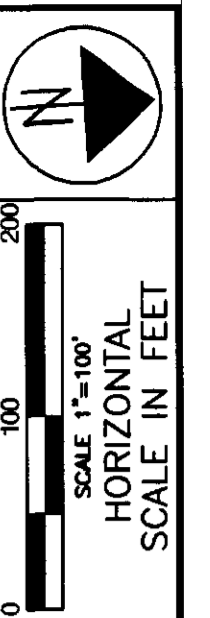


# BOUNDARY SURVEY FOR 21.946 ACRES

STATE OF OHIO, COUNTY OF FRANKLIN, CITY OF COLUMBUS,  
SECTION 3, TOWNSHIP 2, RANGE 16, UNITED STATES MILITARY LANDS



DRAWN	JMT
CALCULATED	RJS
	CHECKED
	RJS

BOUNDARY

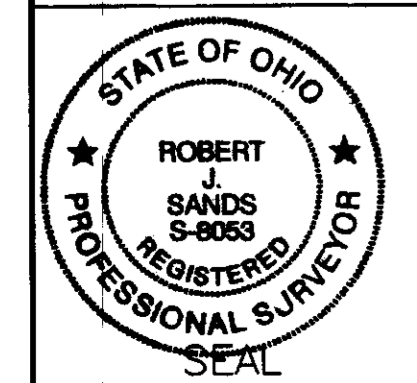
THE GUERNSEY BANK  
BOUNDARY

2  
2

- LEGEND**
- = IRON PIN SET
  - = IRON PIN FOUND
  - = MAG NAIL SET
  - ⊙ = MONUMENT FOUND

PLAN PREPARED BY:  
**ADR & ASSOCIATES, LTD.**

NEWARK OFFICE | WESTERVILLE OFFICE  
88 WEST CHURCH STREET | 279 NORTH STATE STREET  
NEWARK, OH 43055-4068 | WESTERVILLE, OH 43081  
(740) 345-1921 | (614) 891-8643  
www.adrcivil.com



*Robert J. Sands*  
ROBERT J. SANDS, P.S.  
OHIO PROFESSIONAL SURVEYOR # 8053

12/19/02  
DATE

\*\*\* BEARINGS SHOWN HEREON ARE BASED ON A SERIES OF GPS OBSERVATIONS BETWEEN FRANKLIN COUNTY ENGINEER'S MONUMENTS 8824 AND 8825 WHICH HAVE A BEARING OF NORTH 86° 29' 25" WEST. GPS OBSERVATIONS WERE MADE ON DECEMBER 12, 2002.

\*\*\* ALL IRON PINS SET ARE 5/8 REBAR X 30" REBAR WITH YELLOW CAP STAMPED "ADR"

\*\*\* THIS SURVEY IS BASED ON AN ACTUAL FIELD SURVEY CONDUCTED BY ADR & ASSOCIATE, LTD. IN DECEMBER, 2002 UNDER MY DIRECT SUPERVISION

BOUNDARY