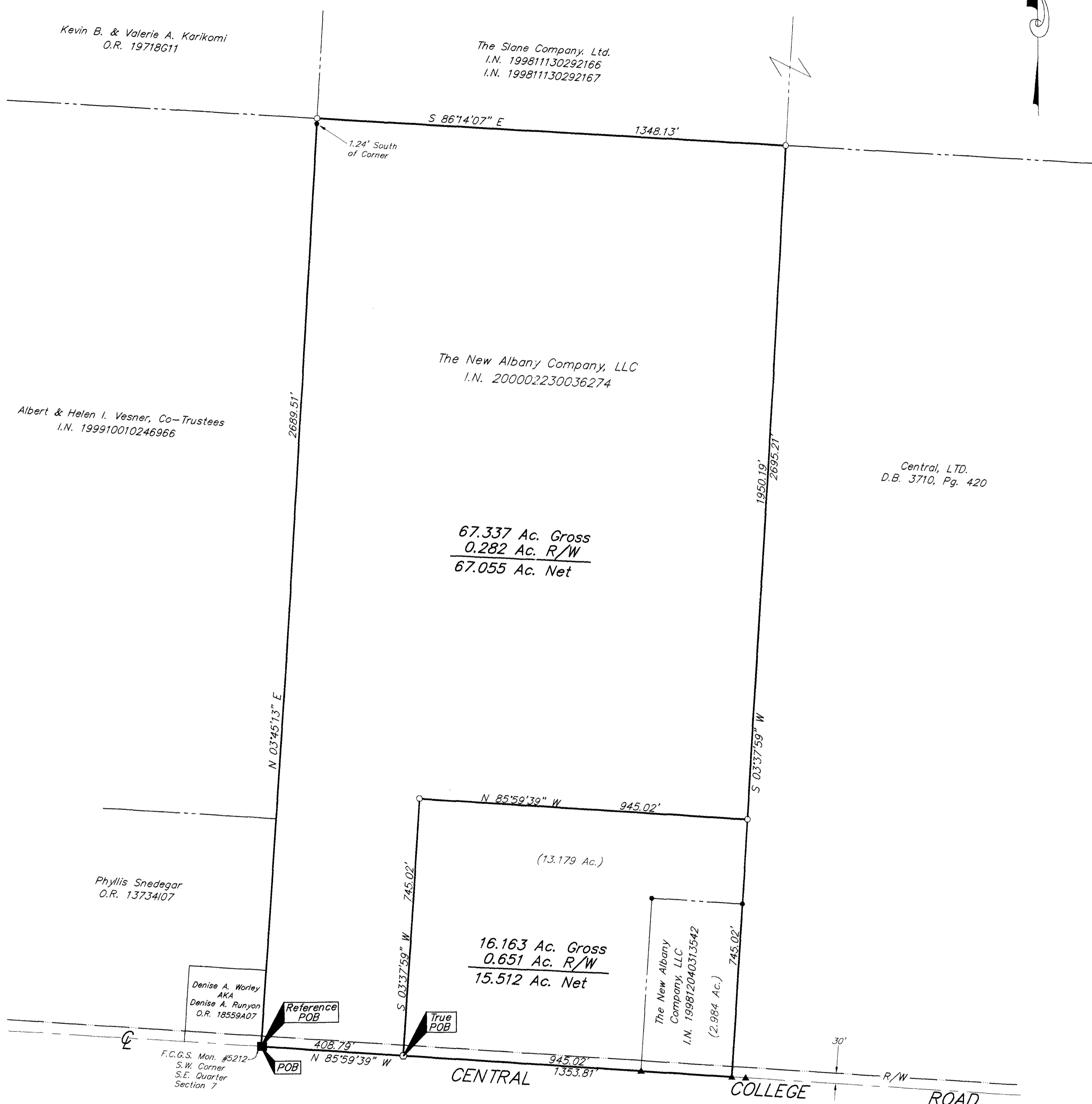


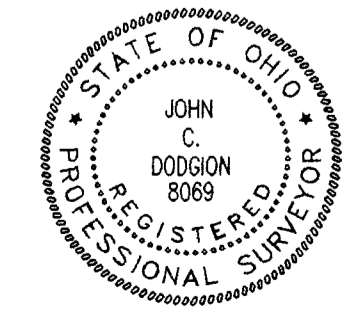
SURVEY OF ACREAGE PARCELS

Located In
 Southeast Quarter Section 7,
 Quarter Township 2, Township 2, Range 16
 United States Military Lands
 City of Columbus, Franklin County, Ohio

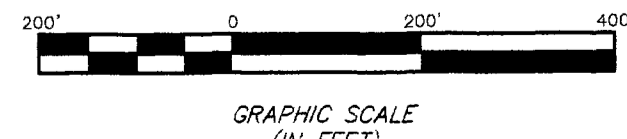


- = MON. FND.
- = I.P. FND.
- = I.P. SET
- ⊙ = MAG. NAIL FND.
- ⊙ = MAG. NAIL SET
- ▲ = R.R. SPK. FND.
- ▲ = R.R. SPK. SET
- = P.K. NAIL FND.

BASIS OF BEARINGS: Bearings are based on The Ohio State Plane Coordinate System as per NAD83. Control for bearings was from coordinates of Franklin County Geodetic Survey Monument Nos. 5574 and 5113, as established by the Franklin County Engineering Department.



Surveyed & Prepared By
EVANS, MECHWART, HAMBLETON & TILTON INC.
 CONSULTING ENGINEERS & SURVEYORS
 170 MILL STREET
 GAHANNA, OHIO 43230
 614/471-5150



By *John C. Dodgin*
 Professional Surveyor No. 8069

SCALE: 1" = 200' OCTOBER 31, 2001

Q:\PROJECT\20011400.01\DWG\11400B.V1.DWG -- PLOTTED BY JBUSHBY -- October 30, 2001 -- 1:07 PM