

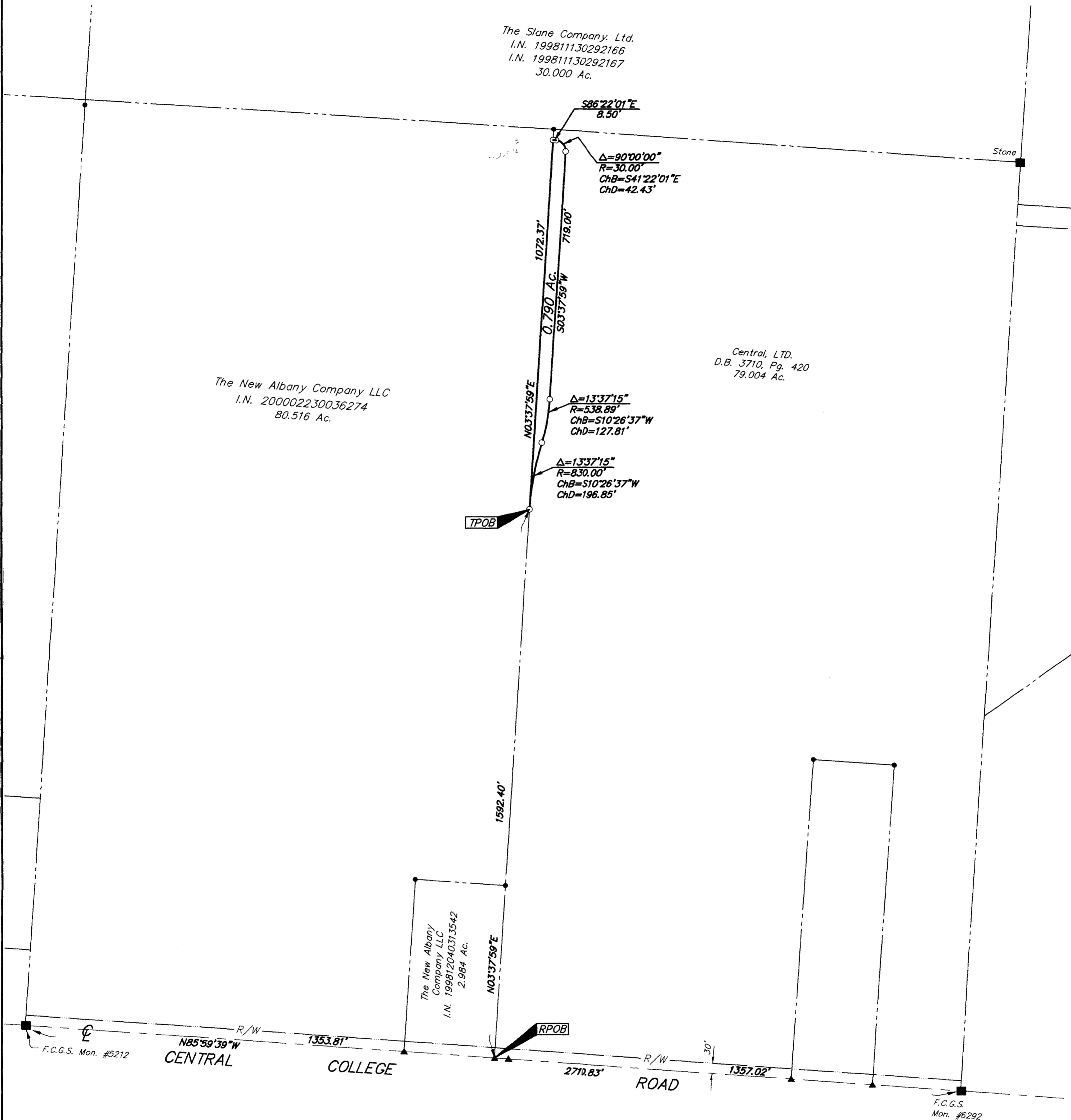
SURVEY OF ACREAGE PARCEL
SECTION 7, QUARTER TOWNSHIP 2,
TOWNSHIP 2, RANGE 16
UNITED STATES MILITARY LANDS
CITY OF COLUMBUS, FRANKLIN COUNTY, OHIO

The Slane Company Ltd.
I.N. 199811130292166
I.N. 199811130292167
30.000 Ac.

The New Albany Company LLC
I.N. 200002230036274
80.516 Ac.

Central, LTD.
D.B. 3710, Pg. 420
79.004 Ac.

The New Albany
Company LLC
I.N. 199812040313542
2.984 Ac.



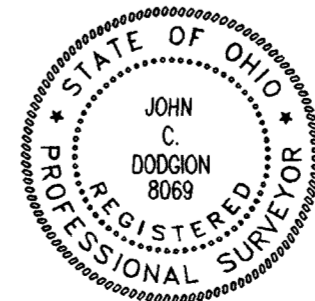
- = MON. FND.
- = I.P. FND.
- = I.P. SET
- = MAG. NAIL FND.
- = MAG. NAIL SET
- ▲ = R.R. SPK. FND.
- △ = R.R. SPK. SET
- = P.K. NAIL FND.

I.P.S. Set are 1 3/16" I.D. Iron pipe W/ cap inscribed EMH&T, Inc.



GRAPHIC SCALE
(IN FEET)

BASIS OF BEARINGS : Bearings are based on The Ohio State Plane Coordinate System as per NAD83. Control for bearings was from coordinates of Franklin County Geodetic Survey Monument Nos. 5574 and 5113, as established by the Franklin County Engineering Department.



By *John C. Dodgion*
Professional Surveyor No. 8069

Surveyed & Prepared
By
EVANS, MECHWART, HAMBLETON & TILTON INC.
CONSULTING ENGINEERS & SURVEYORS
170 MILL STREET
GAHANNA, OHIO 43230
614/471-5150

SCALE: 1" = 200'

DECEMBER 6, 2001