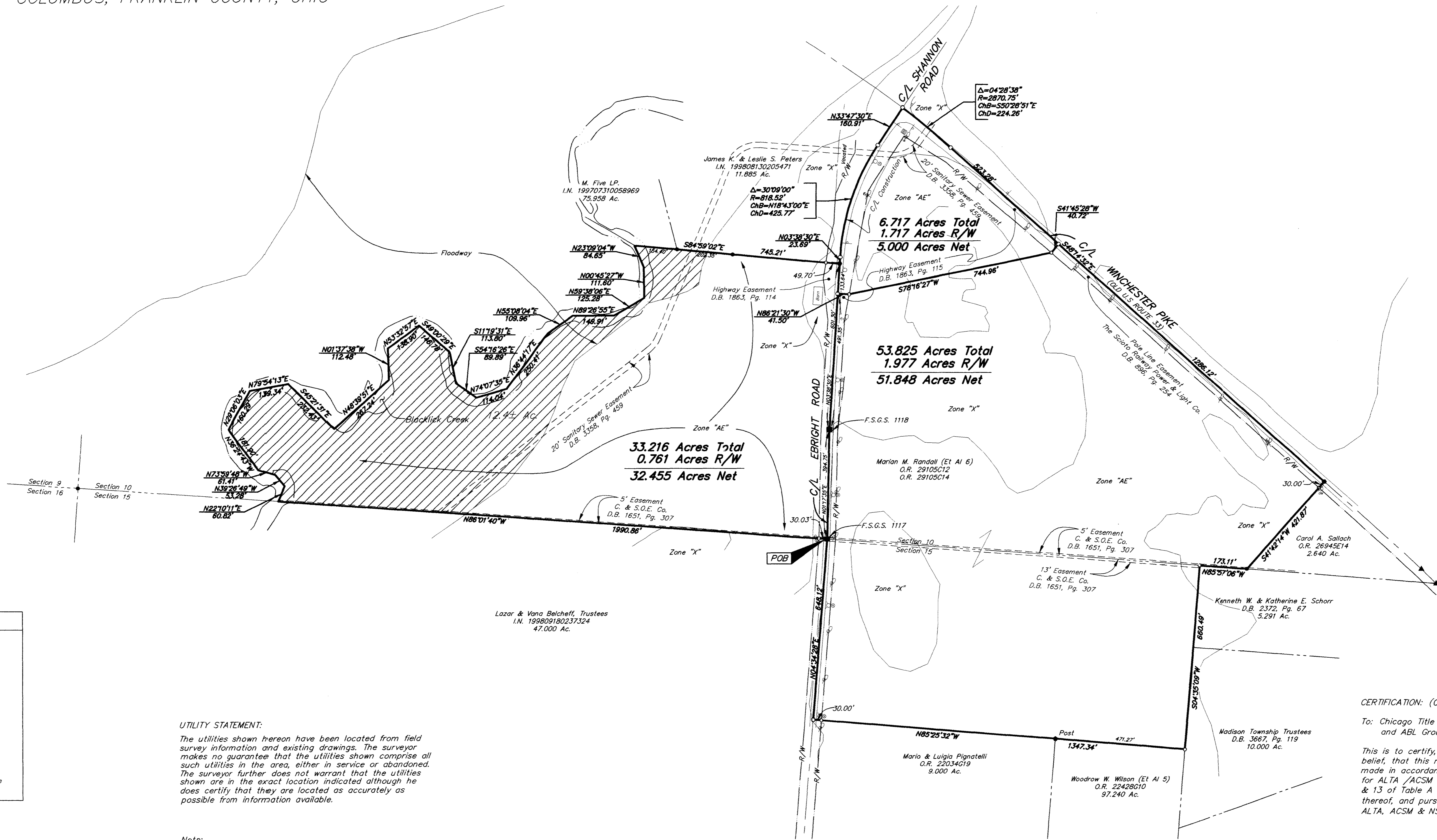


SURVEY OF ACREAGE PARCEL

LOCATED IN
SOUTHWEST QUARTER AND SOUTHEAST QUARTER SECTION 10
AND NORTHEAST QUARTER OF SECTION 15, TOWNSHIP 11, RANGE 21
CONGRESS LANDS
CITY OF COLUMBUS, FRANKLIN COUNTY, OHIO



LEGEND	
	= Utility Pole
	= Power Pole
	= Sign
	= Guy Wire
	= Light pole
	= Water Valve
	= Gas Marker
	= Fire Hydrant
	= Catch Basin
	= Centerline
	= Right of Way Line

UTILITY STATEMENT:
The utilities shown hereon have been located from field survey information and existing drawings. The surveyor makes no guarantee that the utilities shown comprise all such utilities in the area, either in service or abandoned. The surveyor further does not warrant that the utilities shown are in the exact location indicated although he does certify that they are located as accurately as possible from information available.

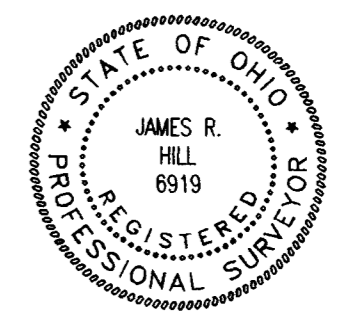
Note:
This site is zoned "R" Rural as of the date of this survey.

- = MON. FND.
 - = I.P. FND.
 - = I.P. SET
 - = MAG. NAIL SET
 - ▲ = R.R. SPK. FND.
 - = POST FND.
- I.P.S. Set are 13/16" I.D. Iron pipe w/ cap inscribed EMH&T, Inc.

BASIS OF BEARINGS: Bearings are based on the Ohio State Plane Coordinate System as per NAD83. Control for bearings was from coordinates of monuments FRANK 32 & 132, having a bearing of South 57°12'05" East, established by the Franklin County Engineering Department, using Global Positioning System procedures and equipment.

According to the Federal Emergency Management Agency's Flood Insurance Rate Map (dated August 2, 1995), the subject parcel shown hereon lies within Zone X (areas determined to be outside 500-year flood plain), Zone AE (Base flood elevation determined: floodway), Community Panel No. 39049C0290C.

CERTIFICATION: (Commitment No. 00060520)
To: Chicago Title Insurance Company, Connor Land Title Agency, LTD. and ABL Group, LTD.
This is to certify, to the best of my knowledge, information and belief, that this map and the survey on which it is based were made in accordance with "Minimum Standard Detail Requirements for ALTA /ACSM and NSPS in 1999", and includes items 1, 3, 4 & 13 of Table A "Optional Survey Responsibilities & Specification" thereof, and pursuant to the Accuracy Standards as adopted by ALTA, ACSM & NSPS in effect on the date of this certification.



SURVEYED & PREPARED BY
EMH&T
CONSULTING ENGINEERS & SURVEYORS
170 MILL STREET
GAHANNA, OHIO 43230
(614) 471-5150

By *James R. Hill*
Professional Surveyor No. 6919

SCALE: 1" = 200'
AUGUST 28, 2001
REVISOR
AUGUST 29, 2001
REVISOR
DECEMBER 3, 2001