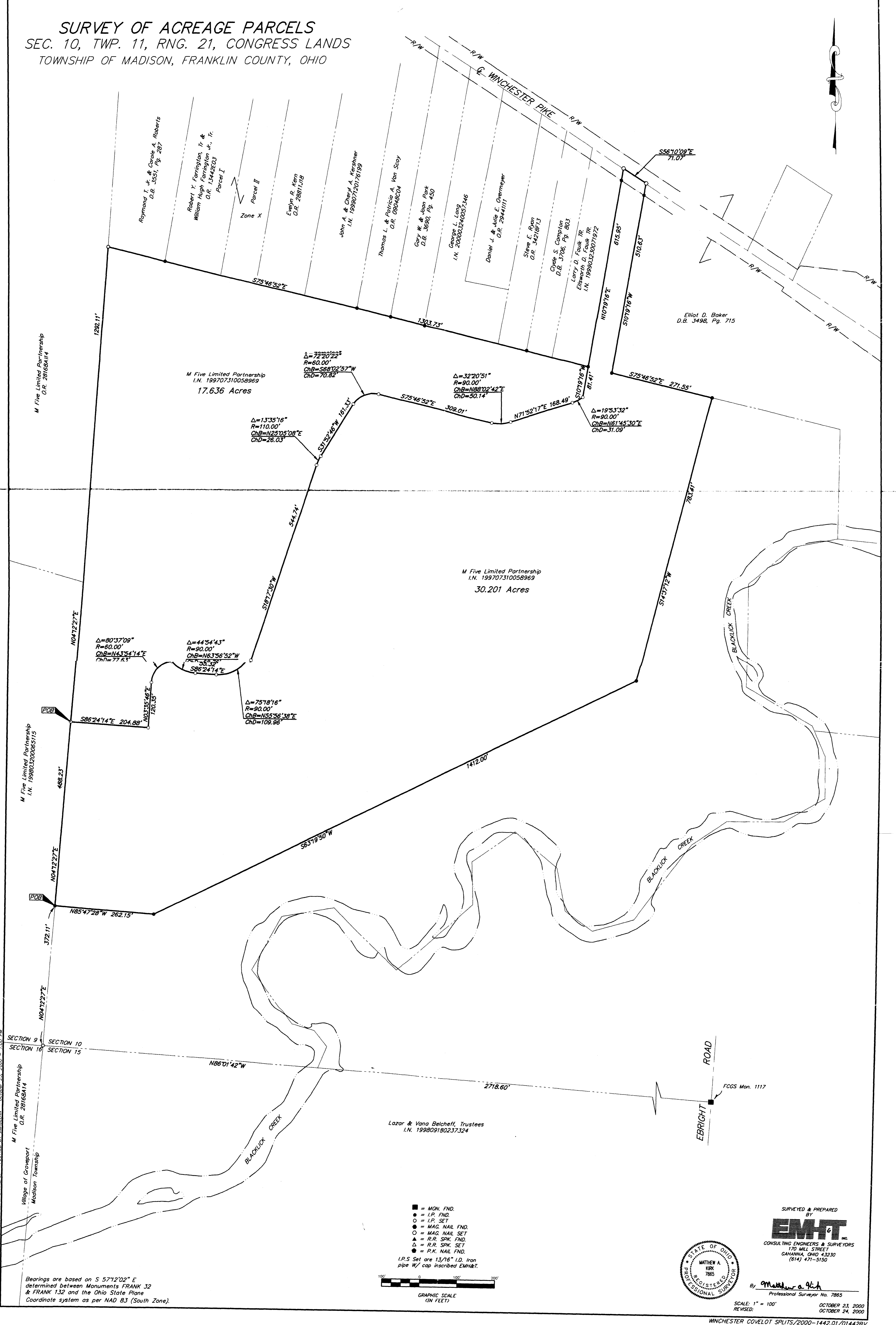
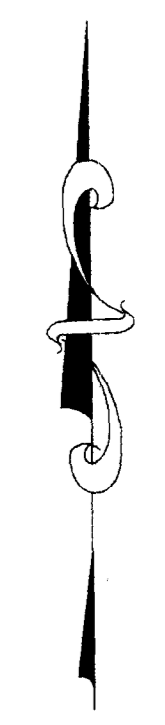


SURVEY OF ACREAGE PARCELS

SEC. 10, TWP. 11, RNG. 21, CONGRESS LANDS
TOWNSHIP OF MADISON, FRANKLIN COUNTY, OHIO



M Five Limited Partnership
O.R. 20168414

M Five Limited Partnership
I.N. 199707310058969
17.636 Acres

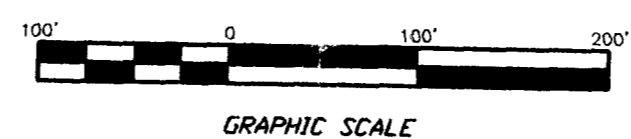
M Five Limited Partnership
I.N. 199707310058969
30.201 Acres

Elliot D. Baker
D.B. 3498, Pg. 715

Lazar & Vana Belcheff, Trustees
I.N. 199809130237324

- = MON. FND.
- = I.P. FND.
- = I.P. SET
- = MAG. NAIL FND.
- = MAG. NAIL SET
- △ = R.R. SPK. FND.
- △ = R.R. SPK. SET
- = P.K. NAIL FND.

I.P.S. Set are 1 3/16" I.D. Iron pipe w/ cap inscribed EMH&T.



GRAPHIC SCALE
(IN FEET)

Bearings are based on S 57°12'02" E determined between Monuments FRANK 32 & FRANK 132 and the Ohio State Plane Coordinate system as per NAD 83 (South Zone).



SURVEYED & PREPARED BY
EMT
CONSULTING ENGINEERS & SURVEYORS
170 MILL STREET
GAHANNA, OHIO 43230
(614) 471-5150

By *Matthew A. Kirk*
Professional Surveyor No. 7865

SCALE: 1" = 100'
REVISED: OCTOBER 23, 2000
OCTOBER 24, 2000

DATE PLOTTED: 2000/10/24 10:44:42 AM PLOTTED BY: JMACLEEN - October 23, 2000 - 1:00 PM