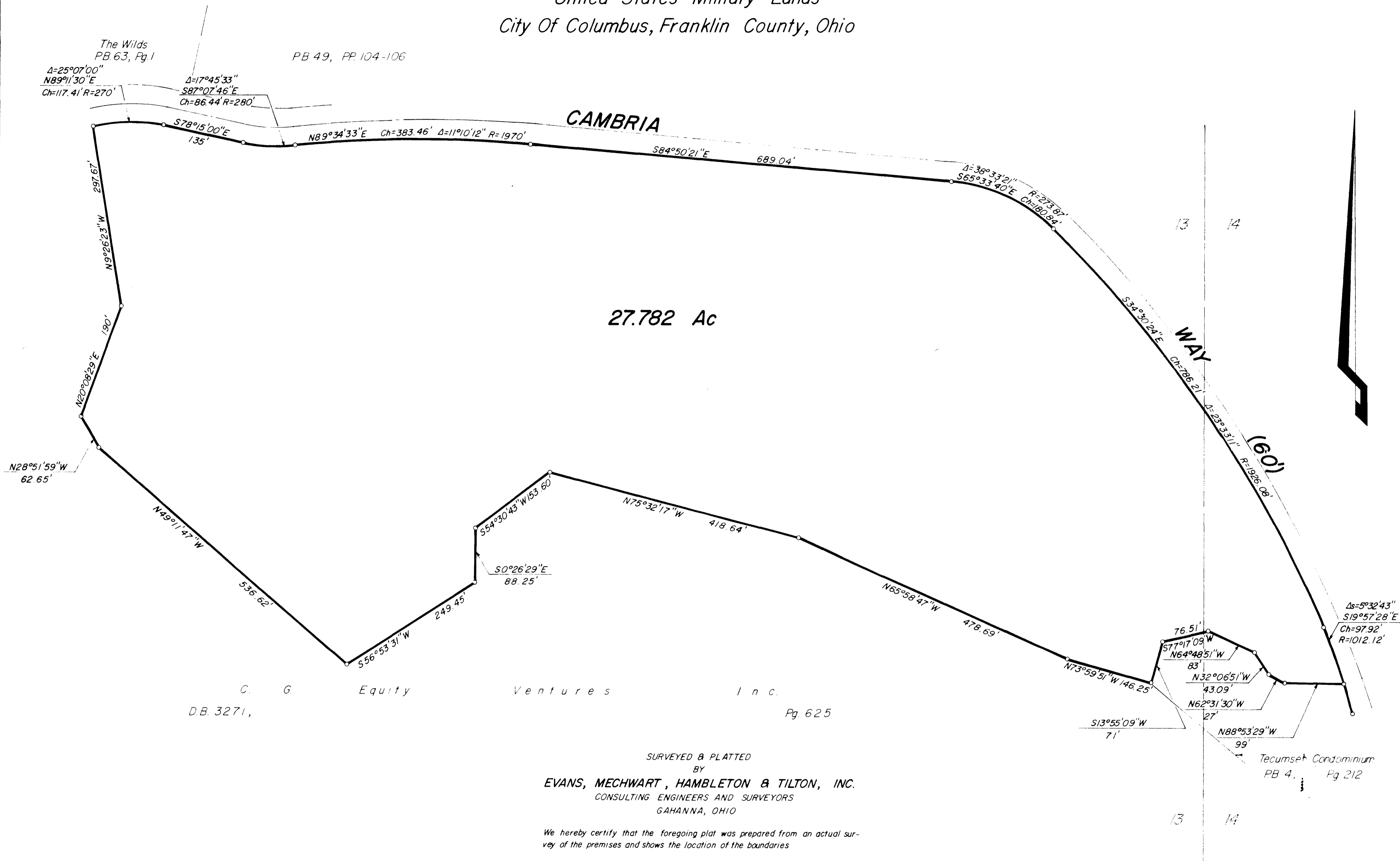


SURVEY OF 27.782 ACRE TRACT
 Located In Lots 13 & 14, Quarter Township 2, Section 3, Range 17
 United States Military Lands
 City Of Columbus, Franklin County, Ohio



C. G. Equity Ventures Inc.
 D.B. 3271, Pg. 625

SURVEYED & PLATTED
 BY
EVANS, MECHWART, HAMBLETON & TILTON, INC.
 CONSULTING ENGINEERS AND SURVEYORS
 GAHANNA, OHIO

We hereby certify that the foregoing plat was prepared from an actual survey of the premises and shows the location of the boundaries

By _____
 Registered Surveyor No. 4965
 SCALE: 1"=100' ○ = IRON PIN

AUGUST 15, 1985
 REVISED DECEMBER 9, 1985
 REVISED APRIL 2, 1986

Tecumseh Condominium
 PB 4, Pg. 212