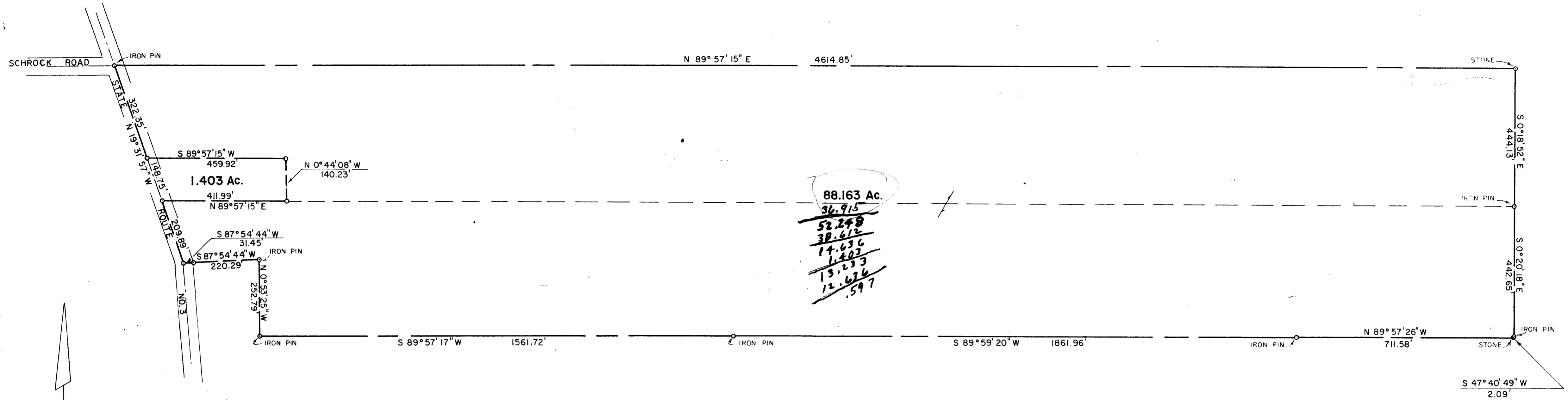


BLENDON TWP.

84857675 / 85107675 / 85357675

0-1



88.62

Par # 2781
Westerville

PROPERTY SURVEY
 OF
 HERBERT C. CLAUSER FARM
 PART OF LOT NO. 3, SECTION 2
 TOWNSHIP 2, RANGE 17
 U. S. MILITARY LANDS
 BLENDON TOWNSHIP
 FRANKLIN COUNTY, OHIO

BURGESS & NIPLE
 CONSULTING ENGINEERS
 COLUMBUS, OHIO

Lovell M. Parson
 REGISTERED SURVEYOR NO. 4376

SEPTEMBER 16, 1960 SCALE 1" = 200'

0750 120 127 025 E SR. 3 1960 0015 030

