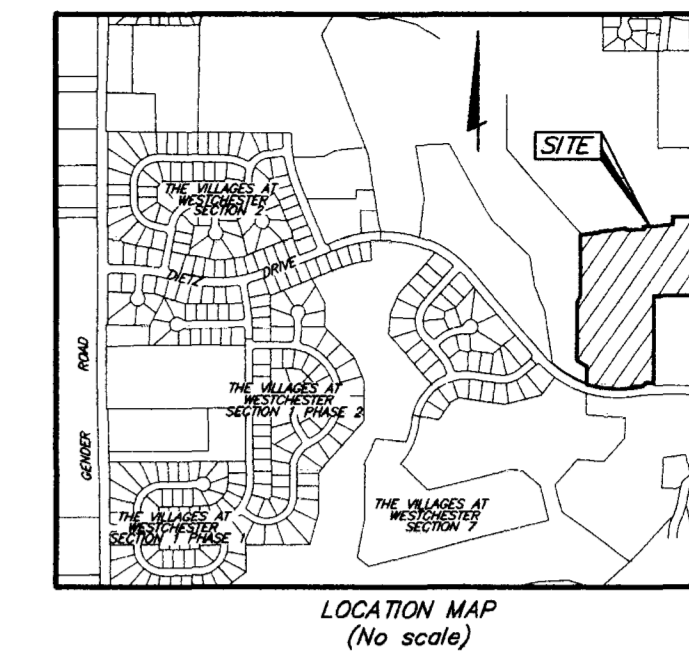
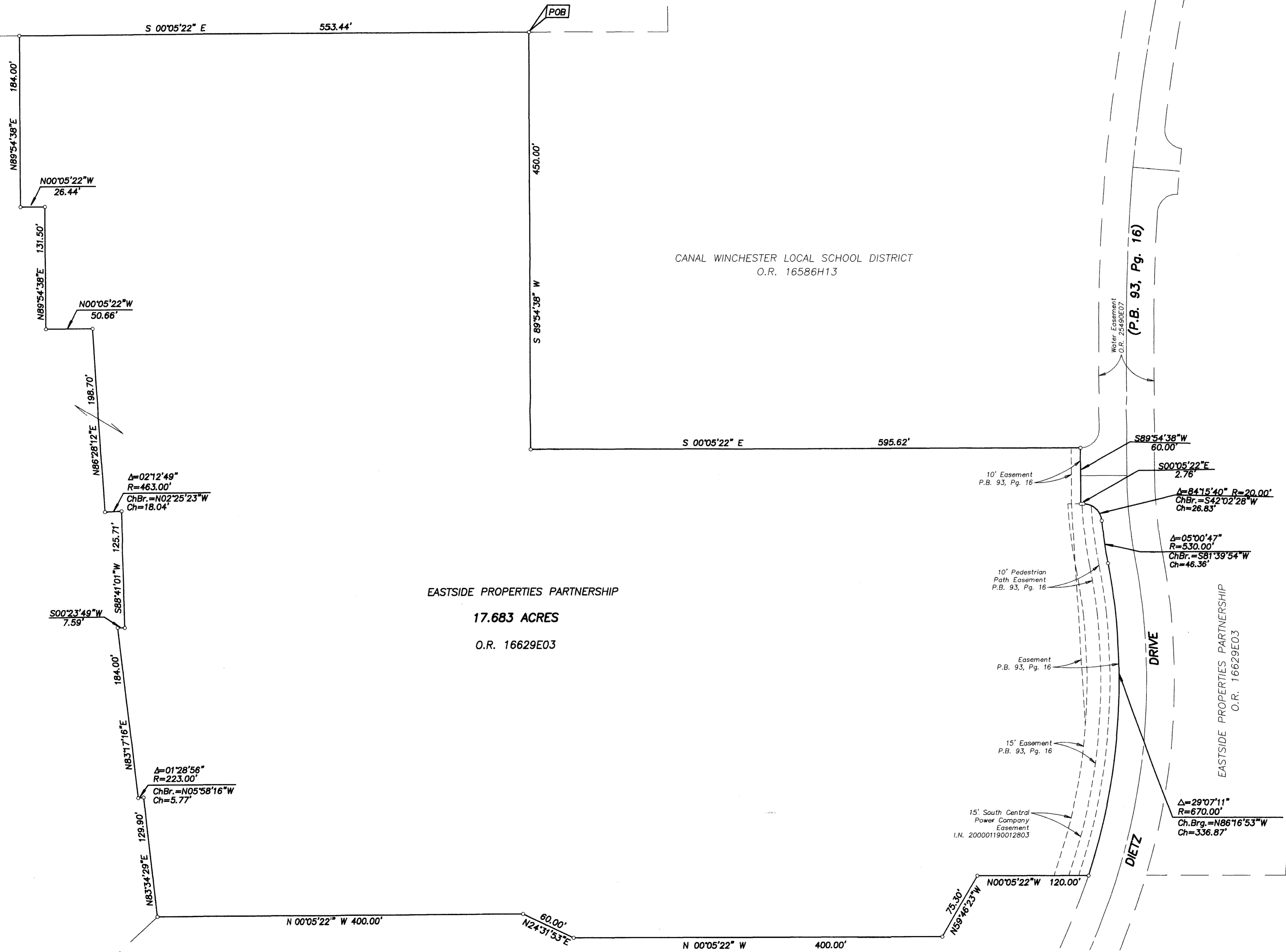


SURVEY OF ACREAGE PARCEL
SECTION 31, TOWNSHIP 15, RANGE 20
CONGRESS LANDS
 VILLAGE OF CANAL WINCHESTER, FRANKLIN COUNTY, OHIO



CANAL WINCHESTER LOCAL SCHOOL DISTRICT
 O.R. 16586H13



EASTSIDE PROPERTIES PARTNERSHIP
17.683 ACRES
 O.R. 16629E03

According to the Federal Emergency Management Agency's Flood Insurance Rate Map (dated August 2, 1995), the subject parcel shown hereon lies within Zone X (areas determined to be outside 500-year flood plain), Community Panel No. 39049C0379G.

BASIS OF BEARINGS: Bearings shown hereon are based on the same meridian as the metes and bounds description of the 105.561 acres tract of land in Official Record 16629E03, Recorder's Office, Franklin County, Ohio.

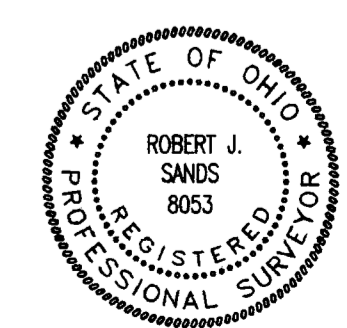
- = MON. FND.
 - = I.P. FND.
 - = I.P. SET
 - = MAG. NAIL FND.
 - = MAG. NAIL SET
 - ▲ = R.R. SPK. FND.
 - ▲ = R.R. SPK. SET
 - ◆ = P.K. NAIL FND.
- I.P.S. Set are 1 3/16" I.D. Iron pipe w/ cap inscribed EMH&T, Inc.

PREPARED BY
EMH&T
 CONSULTING ENGINEERS & SURVEYORS
 170 MILL STREET
 GAHANNA, OHIO 43230
 (614) 471-5150

CERTIFICATION: (Commitment No. 120012600)
 To: FIFTH THIRD BANK, CENTRAL OHIO, STEWART TITLE GUARANTY COMPANY and EASTSIDE PROPERTIES PARTNERSHIP

This is to certify, to the best of my knowledge, information and belief, that this map and the survey on which it is based were made in accordance with "Minimum Standard Detail Requirements for ALTA /ACSM and NSPS in 1999", and includes items 1, 2, 3 & 4 of Table A "Optional Survey Responsibilities & Specification" thereof, and pursuant to the Accuracy Standards as adopted by ALTA, ACSM & NSPS in effect on the date of this certification.

By *Robert J. Swoes* 8/17/01
 Professional Surveyor No. 8053



SCALE: 1" = 50'
 REVISED AUGUST 14, 2001
 AUGUST 17, 2001

DAVIDSON PHILLIPS, INC.
 I.N. 199712310179864

DAVIDSON PHILLIPS, INC.
 I.N. 199712310179864

G:\PROJECT\20010707\DWG\1010245.DWG - 0 SHEETS - PLOTTED BY FRANKER - August 14, 2001 - 8:49 AM