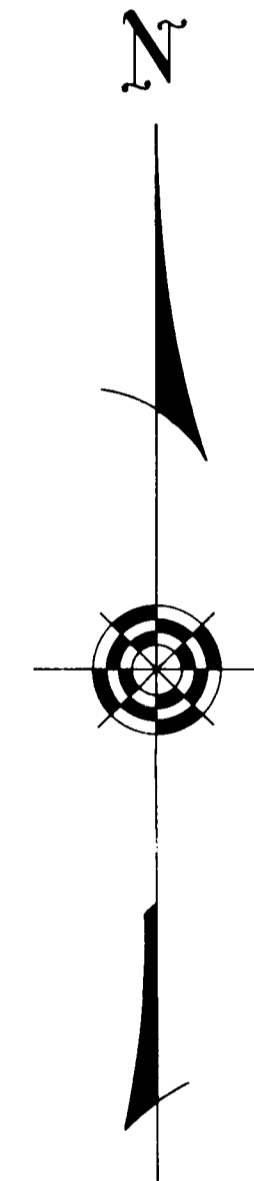
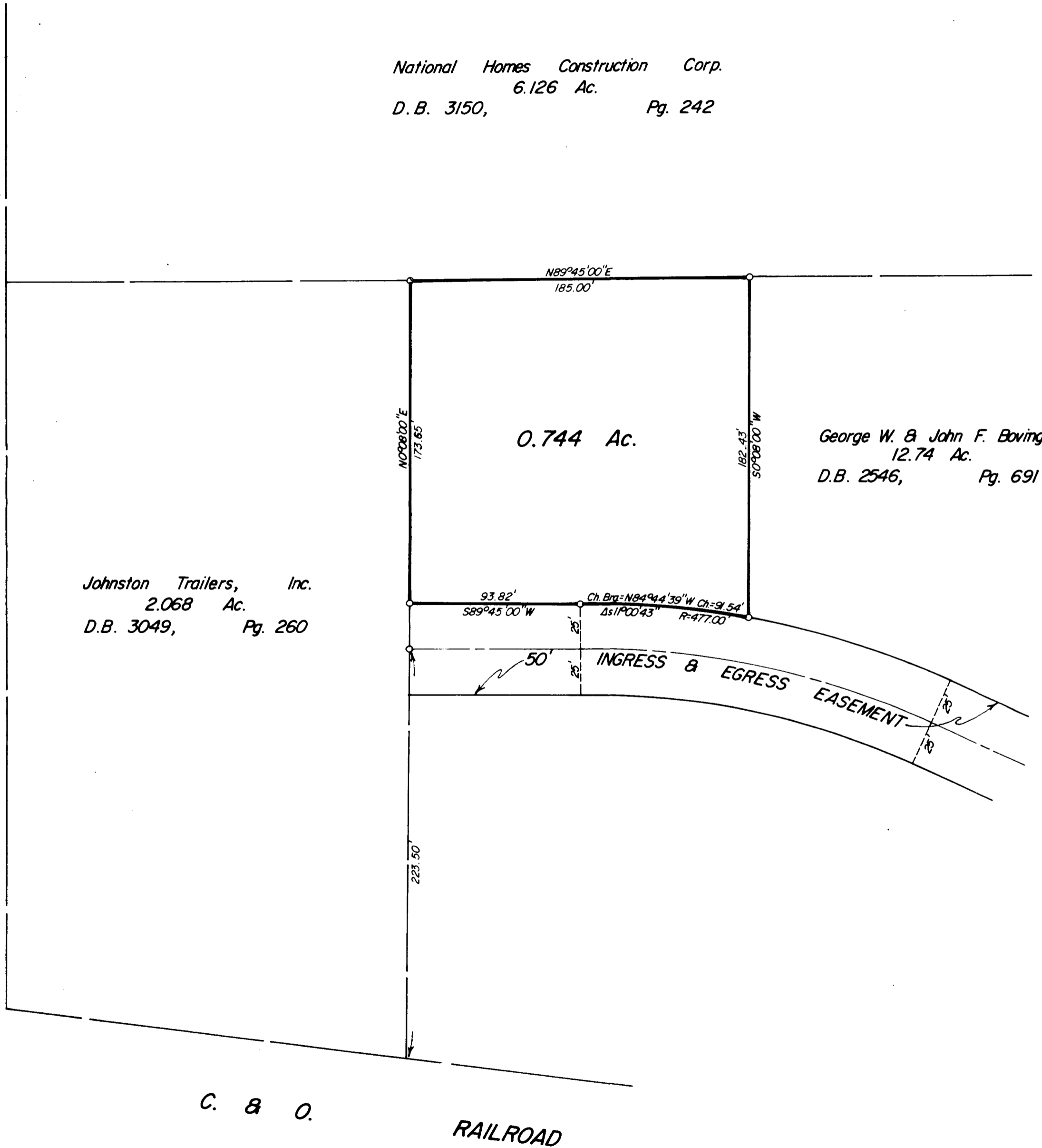


0-48-F

**SURVEY OF 0.744 ACRE TRACT**  
 Located In The N.E. Quarter Of Section 30, Township 15, Range 20  
 Congress Lands  
 Village Of Canal Winchester  
 Madison Township, Franklin County, Ohio

National Homes Construction Corp.  
 6.126 Ac.  
 D.B. 3150, Pg. 242



SURVEYED & PLATTED  
 BY  
**EVANS, MECHWART, HAMBLETON & TILTON, INC.**  
 CONSULTING ENGINEERS AND SURVEYORS  
 GAHANNA, OHIO

By John W. Capell  
 Registered Surveyor No. 5485

SCALE: 1" = 50'

○ = IRON PIN

NOVEMBER 30, 1976