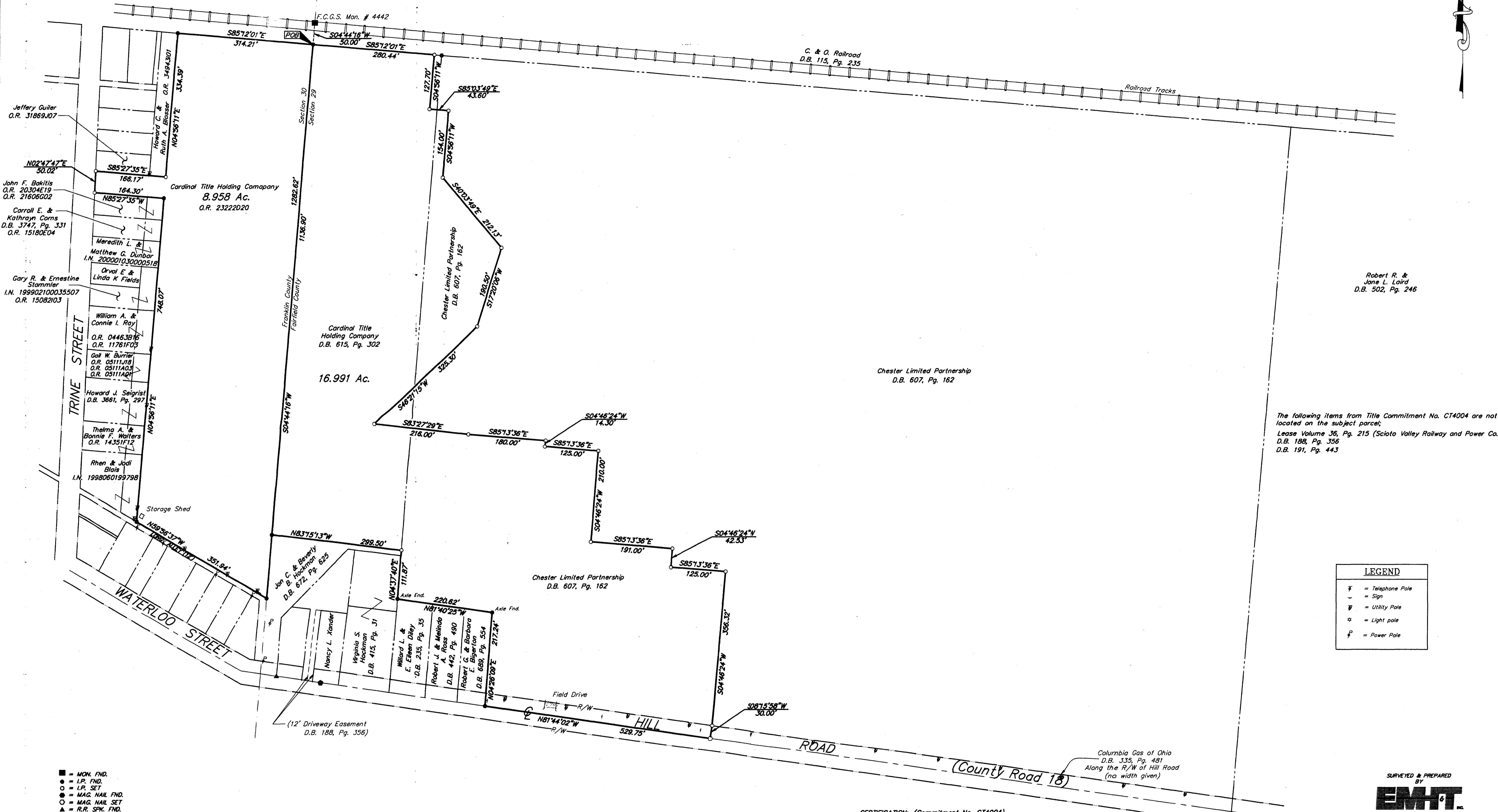


SURVEY OF ACREAGE PARCELS
SECTION 29 & 30, TOWNSHIP 15, RANGE 20
CONGRESS LANDS
VILLAGE OF CANAL WINCHESTER, FRANKLIN & FAIRFIELD COUNTY, OHIO



The following items from Title Commitment No. CT4004 are not located on the subject parcel:
 Lease Volume 36, Pg. 215 (Scioto Valley Railway and Power Co.)
 D.B. 188, Pg. 356
 D.B. 191, Pg. 443

LEGEND	
⊕	= Telephone Pole
⊙	= Sign
⊚	= Utility Pole
⊛	= Light pole
⊔	= Power Pole

- = MON. FND.
 - = I.P. FND.
 - = I.P. SET
 - ⊙ = MAG. NAIL FND.
 - = MAG. NAIL SET
 - △ = R.R. SPK. FND.
 - △ = R.R. SPK. SET
 - = P.K. NAIL FND.
- I.P.S. Set are 13/16" I.D. Iron pipe w/ cap inscribed EMH&T.

The Basis of Bearings for this description are based on a field traverse originating from and tying to Franklin County Geodetic Survey Monuments, including Franklin County Geodetic Survey Monument Numbers 4442 and 7761, are based on the Ohio State Plane Coordinate System, South zone as per NAD 83.

According to the Federal Emergency Management Agency's Flood Insurance Rate Map (dated July 16, 1997), the subject parcel shown hereon lies within Zone X (areas determined to be outside 500-year flood plain), Community Panel No. 39049C0385 H.

CERTIFICATION: (Commitment No. CT4004)

To: Dominion Homes & Cardinal Title Agency, Inc.

This is to certify, to the best of my knowledge, information and belief, that this map and the survey on which it is based were made in accordance with "Minimum Standard Detail Requirements for ALTA /ACSM and NSPS in 1999", and includes items 1, 3, 4 & 13 of Table A "Optional Survey Responsibilities & Specification" thereof, and pursuant to the Accuracy Standards as adopted by ALTA, ACSM & NSPS in effect on the date of this certification.



By *Matthew A. Krok*
 Professional Surveyor No. 7865

SURVEYED & PREPARED BY
EMH&T
 CONSULTING ENGINEERS & SURVEYORS
 170 MILL STREET
 GAYHANA, OHIO 43230
 (614) 471-5150

SCALE: 1" = 100'
 DECEMBER 5, 2000
 DECEMBER 12, 2000
 FEBRUARY 1, 2001

DOMINION HOMES / CANAL COVE / 20001561.01/01561bv