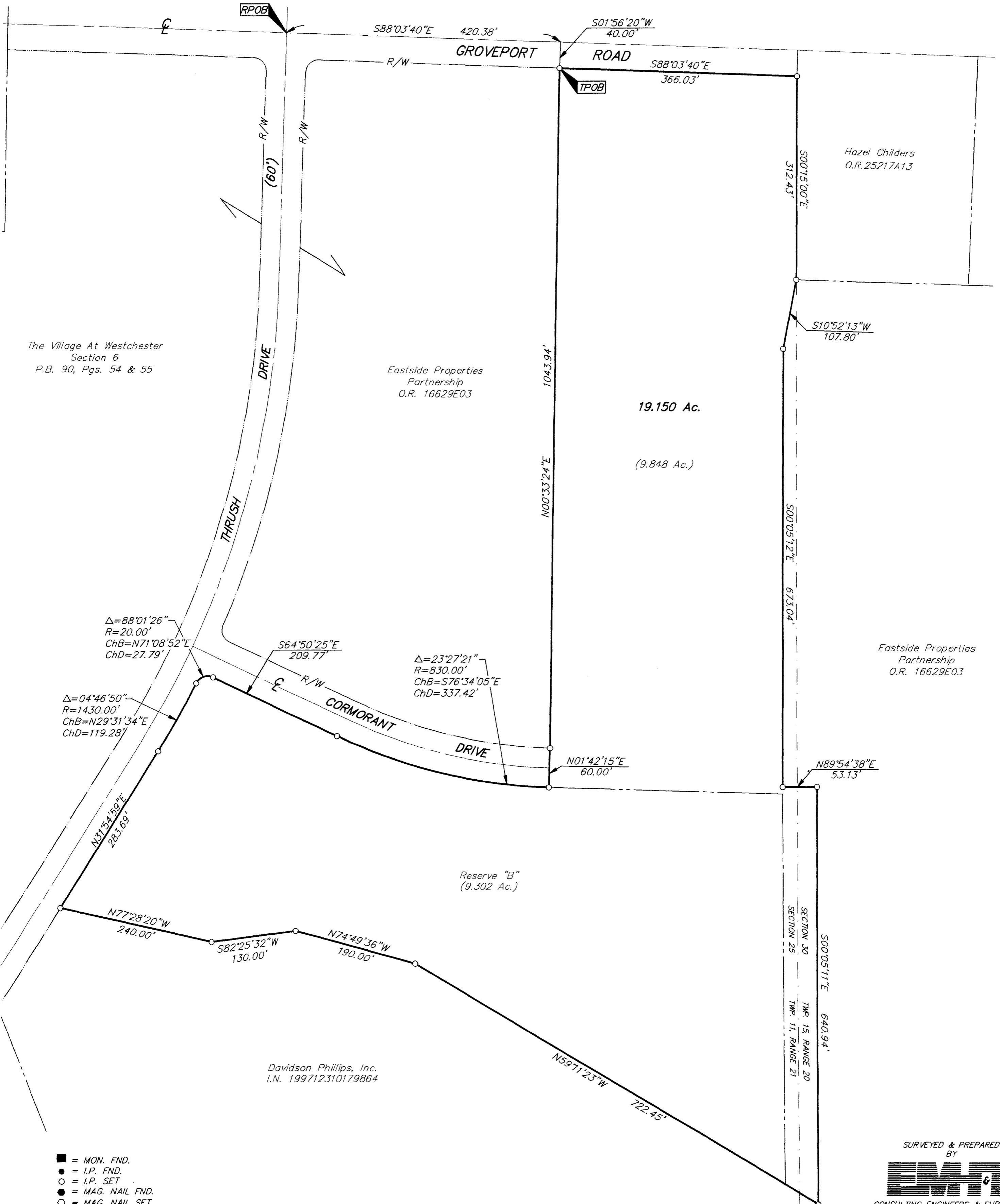


SURVEY OF ACREAGE PARCEL
SECTION 25, TOWNSHIP 11, RANGE 21
SECTION 30, TOWNSHIP 15, RANGE 20
CONGRESS LANDS

VILLAGE OF CANAL WINCHESTER, FRANKLIN COUNTY, OHIO



The Village At Westchester
 Section 6
 P.B. 90, Pgs. 54 & 55

Eastside Properties
 Partnership
 O.R. 16629E03

19.150 Ac.
 (9.848 Ac.)

Eastside Properties
 Partnership
 O.R. 16629E03

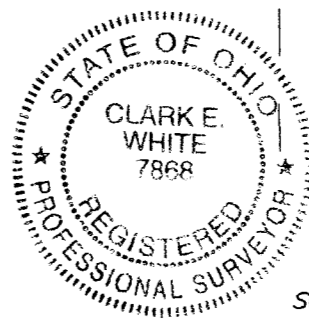
Reserve "B"
 (9.302 Ac.)

Davidson Phillips, Inc.
 I.N. 199712310179864

- = MON. FND.
 - = I.P. FND.
 - = I.P. SET
 - = MAG. NAIL FND.
 - = MAG. NAIL SET
 - ▲ = R.R. SPK. FND.
 - △ = R.R. SPK. SET
 - = P.K. NAIL FND.
- I.P.S Set are 13/16" I.D. Iron pipe W/ cap inscribed EMHT INC



BASIS OF BEARINGS: Bearings shown hereon are based on the same meridian as the subdivision entitled "The Villages at Westchester Section 6" of record in P.B. 90, Pg. 54, Recorder's Office, Franklin County, Ohio.



SURVEYED & PREPARED BY
EMHT INC.
 CONSULTING ENGINEERS & SURVEYORS
 170 MILL STREET
 GAHANNA, OHIO 43230
 (614) 471-5150

By *Clark E. White*
 Professional Surveyor No. 7868

Q:\PROJECT\20021432\DWG\21432BV.DWG -- O XREFS: -- PLOTTED BY MGREEN -- September 27, 2002 -- 8:34 AM