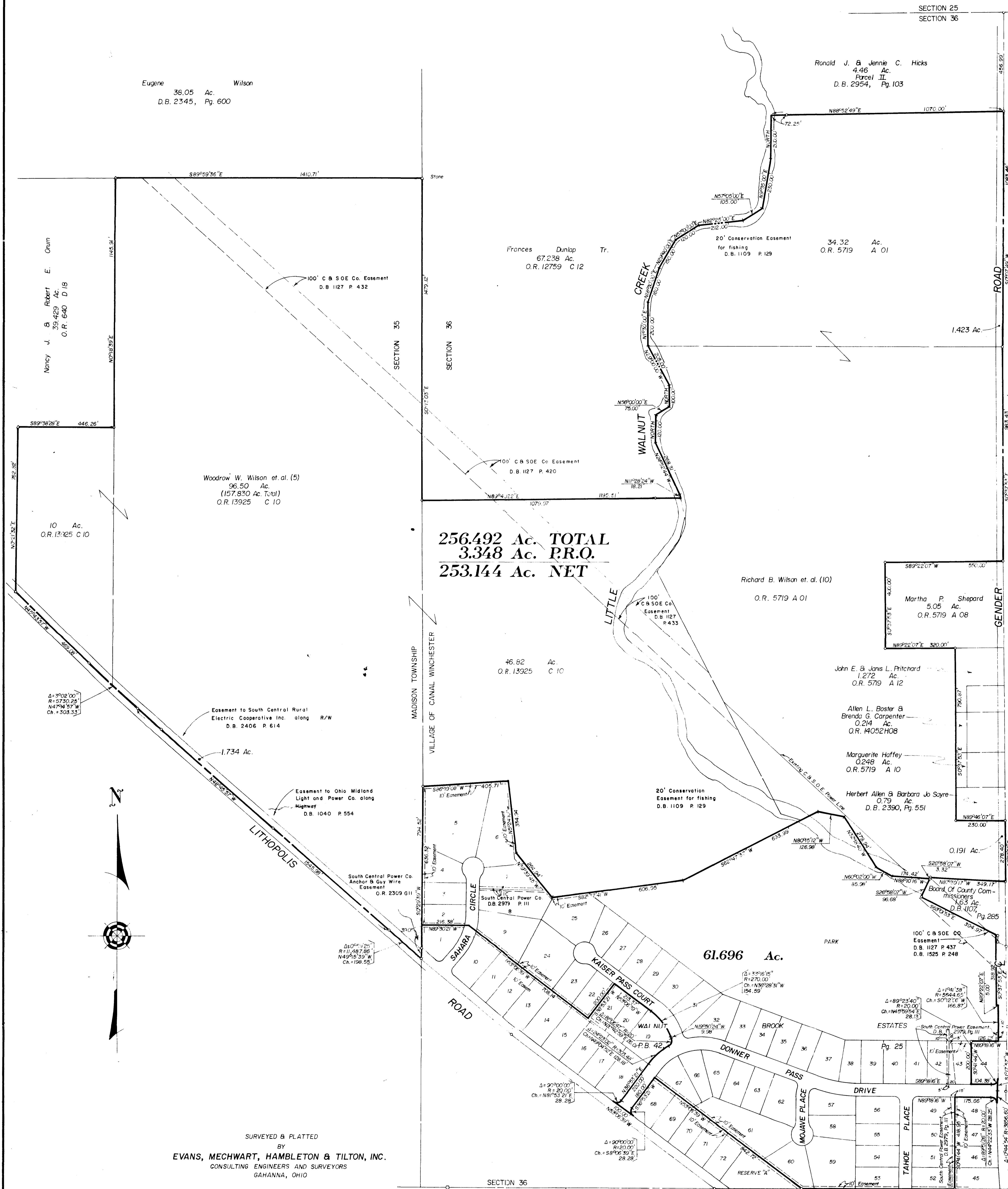


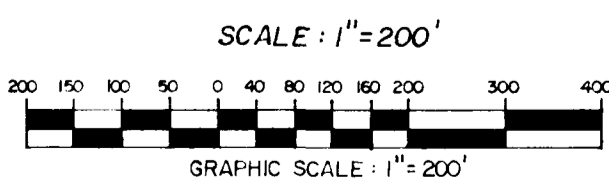
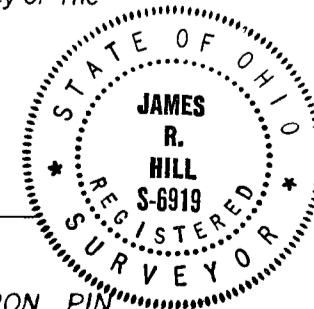
SURVEY OF ACREAGE PARCELS
 Located In
Sections 30 And 31, Township 15, Range 20
 And
Sections 25, 35 And 36, Township 11, Range 21
Congress Lands
Village Of Canal Winchester And Madison Township, Franklin County, Ohio



SURVEYED & PLATTED
 BY
EVANS, MECHWART, HAMBLETON & TILTON, INC.
 CONSULTING ENGINEERS AND SURVEYORS
 GAHANNA, OHIO

We hereby declare that this plat was prepared from an actual survey of the premises and shows the location of the boundaries.

By *James E. Hill*
 Professional Surveyor No. 6919



IRON PIN
 NOVEMBER 15, 1990

BASIS OF BEARINGS
 The bearings are based upon a meridian in a bearing system in which the easterly line of Section 36, Township 11, Range 21, has a bearing of North 0°03'47" East.