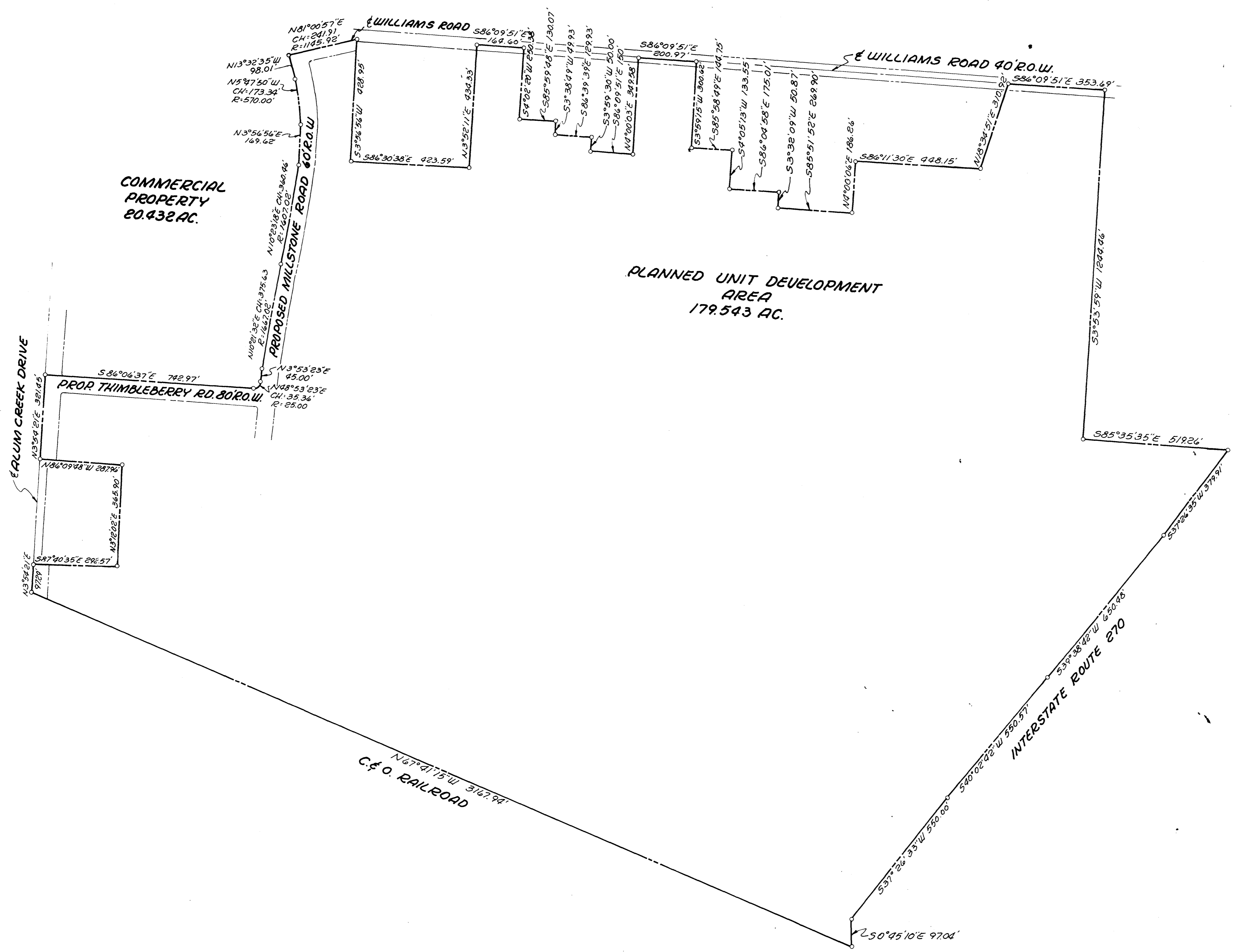
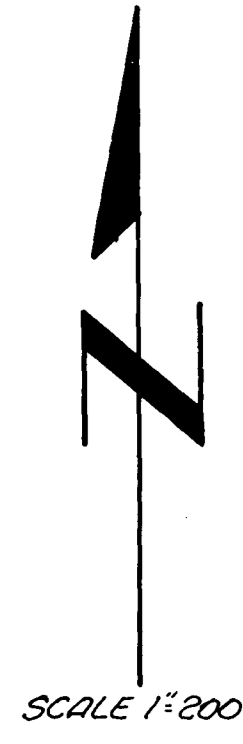


O-41-E &
N-122-DD-DDD



SURVEY OF A 179.543 ACRES TRACT
CITY OF COLUMBUS, FRANKLIN COUNTY, OHIO
FOR

SIGMA CONTINENTAL CORPORATION

BURGESS & NIPLÉ, LIMITED
CONSULTING ENGINEERS
COLUMBUS, OHIO

BY Harold A. Smith 8-27-74
REGISTERED SURVEYOR N° 4265, OHIO DATE

1670 120 075 008 E ALUM CREEK DR 1974 0415 030