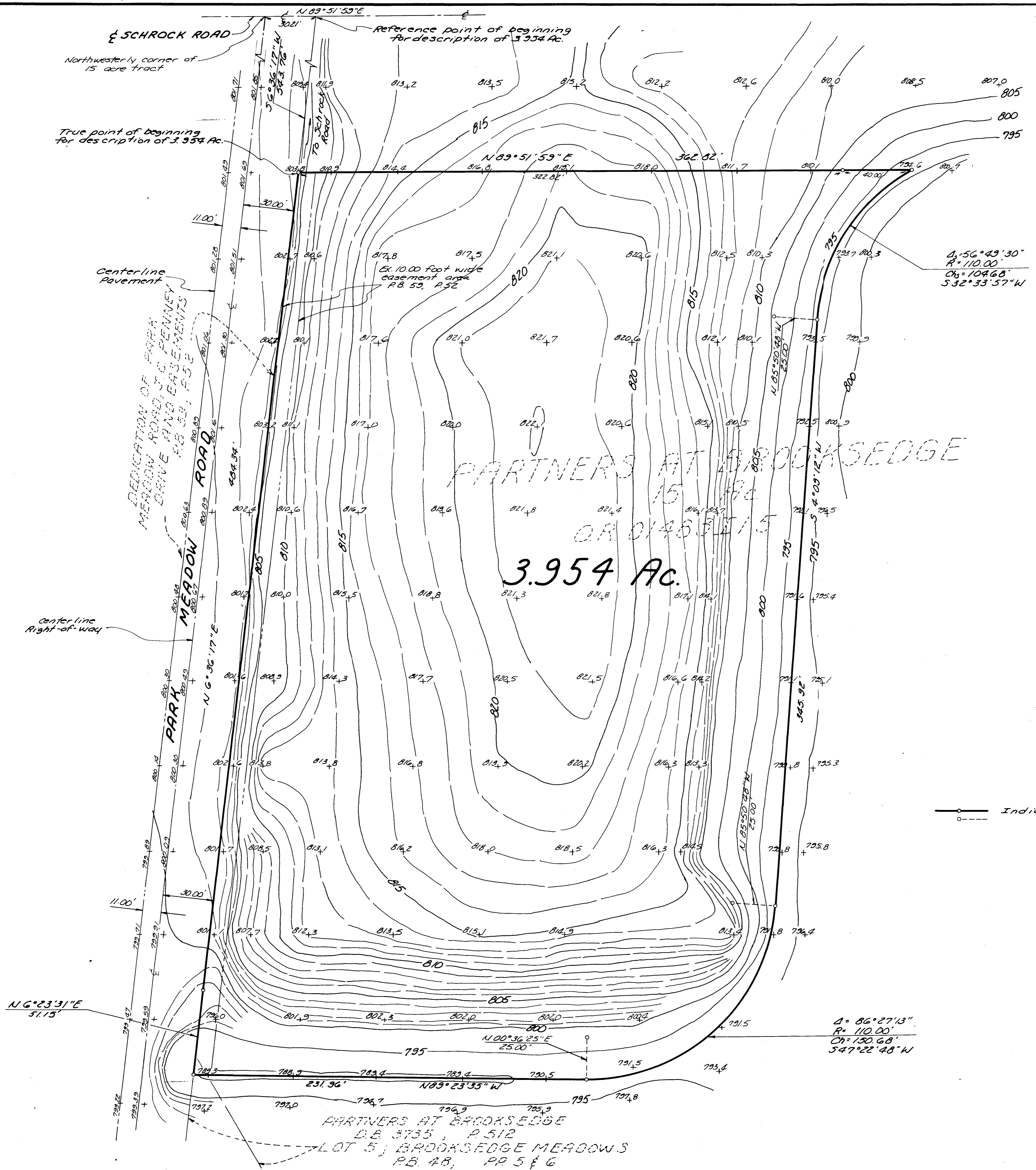


0-1-D



Situated in the State of Ohio, County of Franklin, City of Westerville, being, in Section 2, Township 2, Range 17, United States Military Lands, containing 3.954 acres of land more or less, 3.953 acres of said 3.954 acres being out of that 15 acre tract of land conveyed to the Partners of Brooksege by deed of record in Official Record 01483115, and 0.001 acre of said 3.954 acres being a part of Lot 5 as the same is numbered and delineated upon the recorded plat of Brooksege Meadows, of record in Plat Book 48, Pages 5 & 6, said Lot 5 being that tract of land designated as Parcel #1, in the deed to the Partners of Brooksege, of record in Deed Book 3735, Page 512, all being of record in the Recorder's Office, Franklin County, Ohio.

The bearings shown on the above map correspond to the bearings shown on the recorded plat of Brooksege Meadows, of record in Plat Book 48, Pages 5 & 6, Recorder's Office, Franklin County, Ohio.

We hereby certify that the above map was prepared from information obtained from actual field surveys conducted at various times beginning on May 1, 1971 and extending through June of 1985. All the survey markers shown on the above map were in place on June 25, 1985.

Bauer, Davidson & Merchant, Inc.  
Consulting Engineers

By Jimmie L. Davis  
Jimmie L. Davis  
Professional Surveyor No. 6322

—○— Indicates 3/4-inch (1.0) iron pipes

**BOUNDARY AND TOPOGRAPHIC SURVEY MAP OF 3.954 ACRES OF LAND LOCATED ON THE EASTERLY SIDE OF PARK MEADOW ROAD AND SOUTH OF SCHROCK ROAD, IN THE CITY OF WESTERVILLE, COUNTY OF FRANKLIN, STATE OF OHIO**

Bauer, Davidson & Merchant, Inc.  
Consulting Engineers  
2607 1/2 N. High St.  
Columbus, Ohio

June 27, 1985

Order No. 753-85

Scale: 1"=30'

PARTNERS AT BROOKSEGE  
D.B. 3735, P. 512  
LOT 5; BROOKSEGE MEADOWS  
P.B. 48, PP. 5 & 6