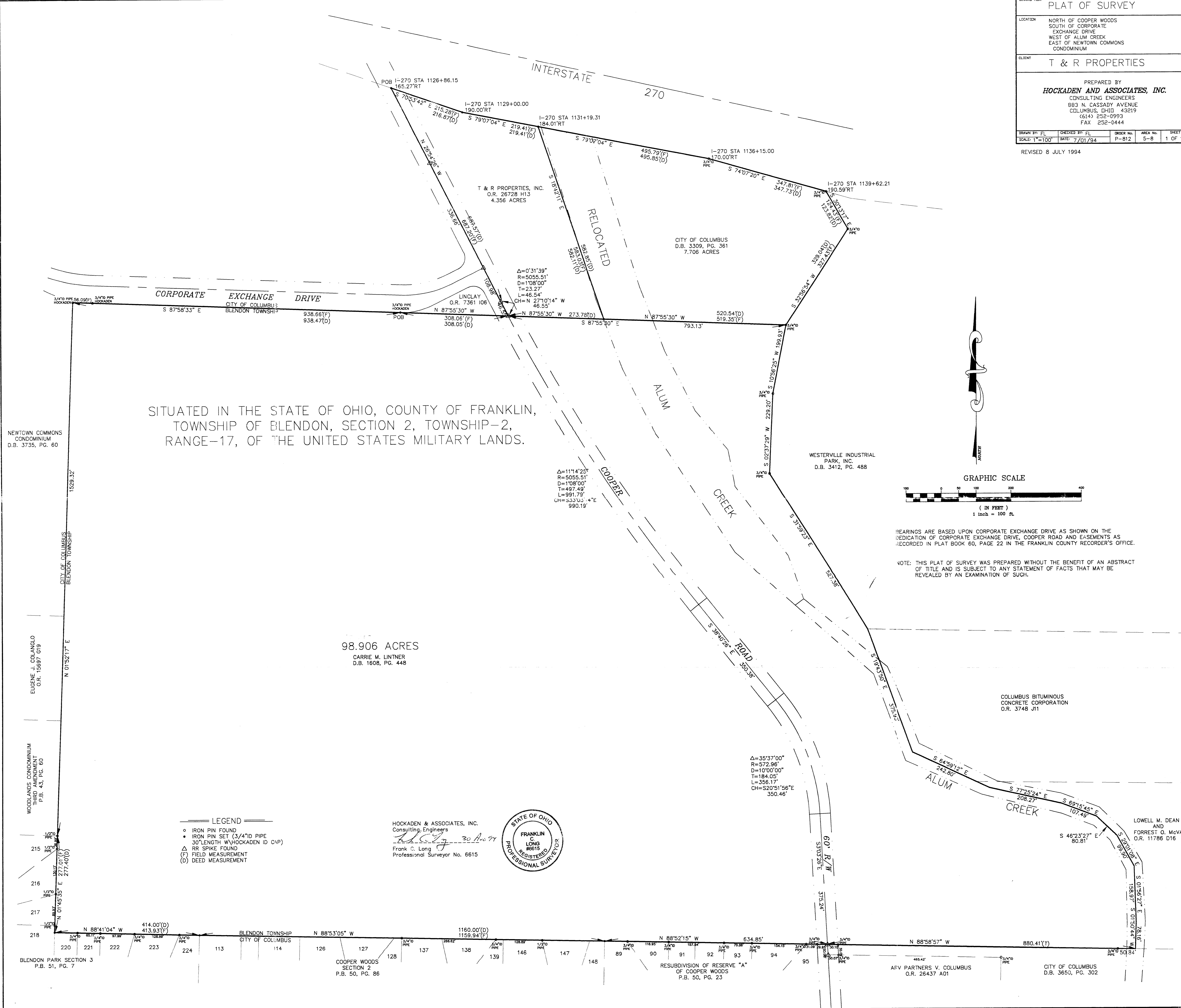


DESCRIPTION PLAT OF SURVEY				
LOCATION NORTH OF COOPER WOODS SOUTH OF CORPORATE EXCHANGE DRIVE WEST OF ALUM CREEK EAST OF NEWTOWN COMMONS CONDOMINIUM				
CLIENT T & R PROPERTIES				
PREPARED BY HOCKADEN AND ASSOCIATES, INC. CONSULTING ENGINEERS 883 N. CASSADY AVENUE COLUMBUS, OHIO 43219 (614) 252-0993 FAX 252-0444				
DRAWN BY: FL	CHECKED BY: FL	ORDER NO. P-812	AREA NO. 5-8	SHEET 1 OF 1
SCALE: 1"=100' DATE: 7/01/94 REVISED 8 JULY 1994				



SITUATED IN THE STATE OF OHIO, COUNTY OF FRANKLIN,
TOWNSHIP OF BLENDON, SECTION 2, TOWNSHIP-2,
RANGE-17, OF THE UNITED STATES MILITARY LANDS.

NEWTOWN COMMONS
CONDOMINIUM
D.B. 3735, PG. 60

EUGENE J. COLANGLO
O.R. 15697 G19

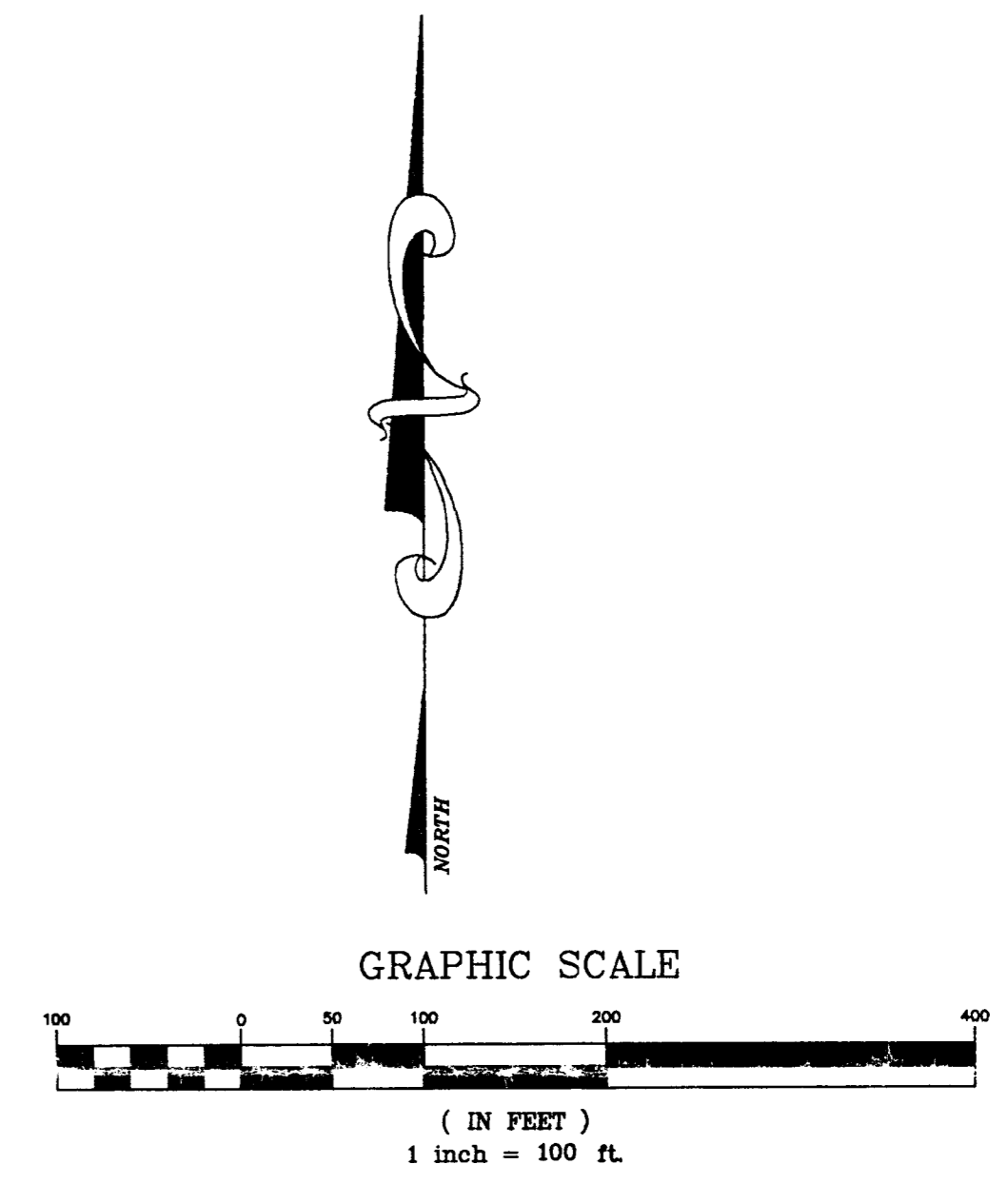
WOODLANDS CONDOMINIUM
THIRD AMENDMENT
P.B. 43, PG. 60

BLENDON PARK SECTION 3
P.B. 51, PG. 7

- LEGEND**
- IRON PIN FOUND
 - IRON PIN SET (3/4" ID PIPE
30" LENGTH W/ HOCKADEN ID CAP)
 - △ RR SPIKE FOUND
 - (F) FIELD MEASUREMENT
 - (D) DEED MEASUREMENT

98.906 ACRES
CARRIE M. LINTNER
D.B. 1608, PG. 448

HOCKADEN & ASSOCIATES, INC.
Consulting Engineers
Frank C. Long
Frank C. Long
Professional Surveyor No. 6615



BEARINGS ARE BASED UPON CORPORATE EXCHANGE DRIVE AS SHOWN ON THE
DEDICATION OF CORPORATE EXCHANGE DRIVE, COOPER ROAD AND EASEMENTS AS
RECORDED IN PLAT BOOK 60, PAGE 22 IN THE FRANKLIN COUNTY RECORDER'S OFFICE.

NOTE: THIS PLAT OF SURVEY WAS PREPARED WITHOUT THE BENEFIT OF AN ABSTRACT
OF TITLE AND IS SUBJECT TO ANY STATEMENT OF FACTS THAT MAY BE
REVEALED BY AN EXAMINATION OF SUCH.

WESTERVILLE INDUSTRIAL
PARK, INC.
D.B. 3412, PG. 488

COLUMBUS BITUMINOUS
CONCRETE CORPORATION
O.R. 3748 J11

LOWELL M. DEAN
AND
FORREST O. McVAY
O.R. 11786 D16

ARV PARTNERS V. COLUMBUS
O.R. 26437 A01

CITY OF COLUMBUS
D.B. 3650, PG. 302

COOPER WOODS
SECTION 2
P.B. 50, PG. 86

RESUBDIVISION OF RESERVE "A"
OF COOPER WOODS
P.B. 50, PG. 23