

SURVEY OF ACREAGE PARCEL
 SEC 25 TWP 11 RNG 21 CONGRESS LANDS
 VILLAGE OF CANAL WINCHESTER, FRANKLIN COUNTY, OHIO

GENDER / THIRTY THREE
 83.393 (PARCEL 1)
 OR 11357F13
 OR 11357F16

WINCHESTER INVESTMENT COMPANY
 D.B. 3476, Pg. 335

AP HOTELS OF ILLINOIS, INC.
 IN 19980908227287
 1.791 Ac.

35.863 Acres

SAMUEL M BAKER
 ELLIOT D BAKER
 HARRIET S LEVIN
 IN 199706160023449
 PARCEL NO. TWO

WINCHESTER INVESTMENT COMPANY
 D.B. 3476, Pg. 335

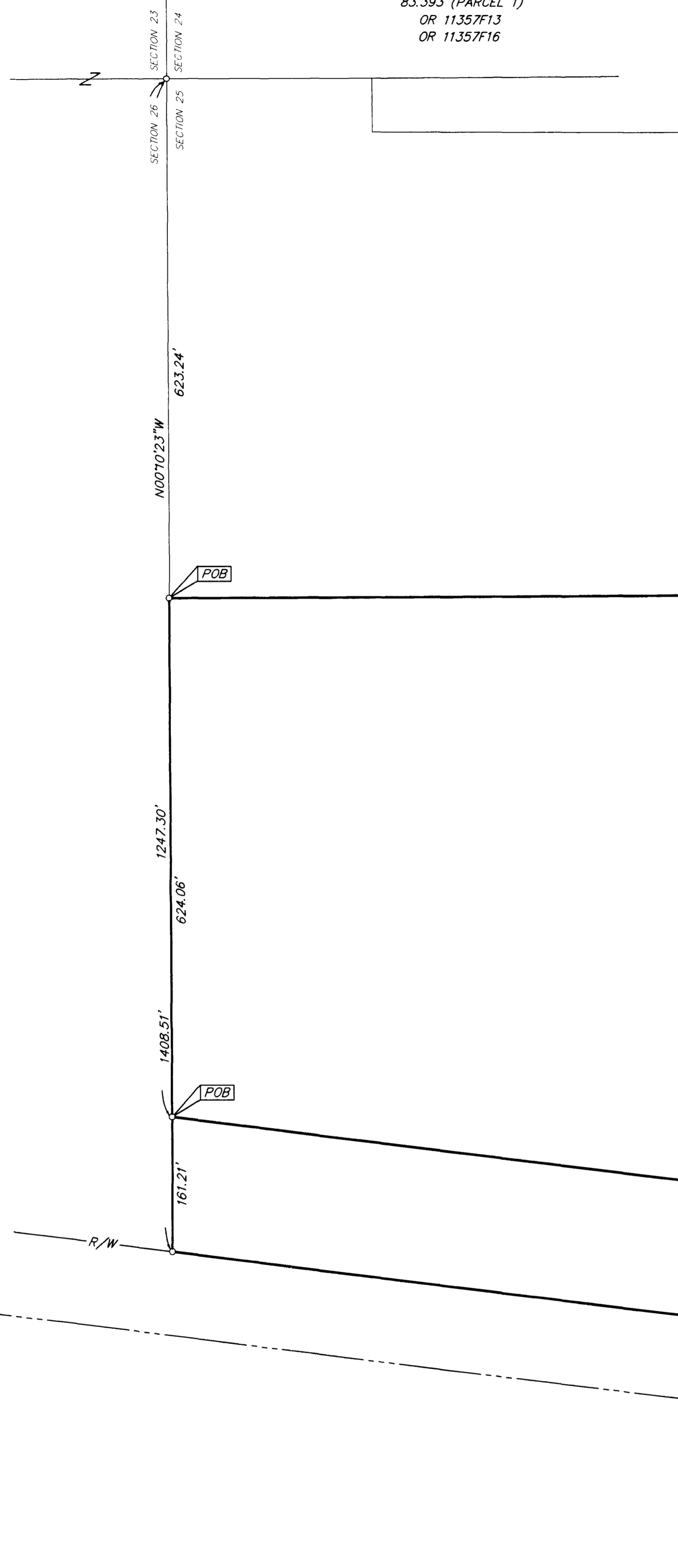
8.106 Acres

VILLAGE OF CANAL WINCHESTER
 D.B. 3080, Pg. 373
 2.232 ACRES

C & O RAILROAD

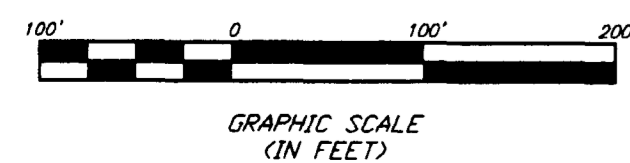
PRENTISS SCHOOL STREET

CANAL STREET
 P.B. 87, PG. 40-41



- ▲ R.R. Spk. Fnd.
- △ R.R. Spk. Set
- I.P. Fnd.
- I.P. Set

I.P. set are 3/4" O.D. Iron Pin
 30" long w/cap inscribed EMH&T.



The bearings hereon are based on the same
 meridian as the right-of-way line of Winchester
 Boulevard (N 89° 35' 38" E), of record in
 Official Record 27286D07.



SURVEYED & PREPARED
 BY
EMT
 CONSULTING ENGINEERS & SURVEYORS
 170 MILL STREET
 GAHANNA, OHIO 43230
 (614) 471-5150

By *Jeffrey A. Miller* 3.26.99
 Professional Surveyor No. 7211

SCALE: 1" = 100' March 26, 1999

I:\SERVER-4\151\PROJECT\19990374\EMT\0307-48\DWG\0 - 0 SHEETS - PLOTTED BY JMACLEINW - March 26, 1999 - 8:27 AM