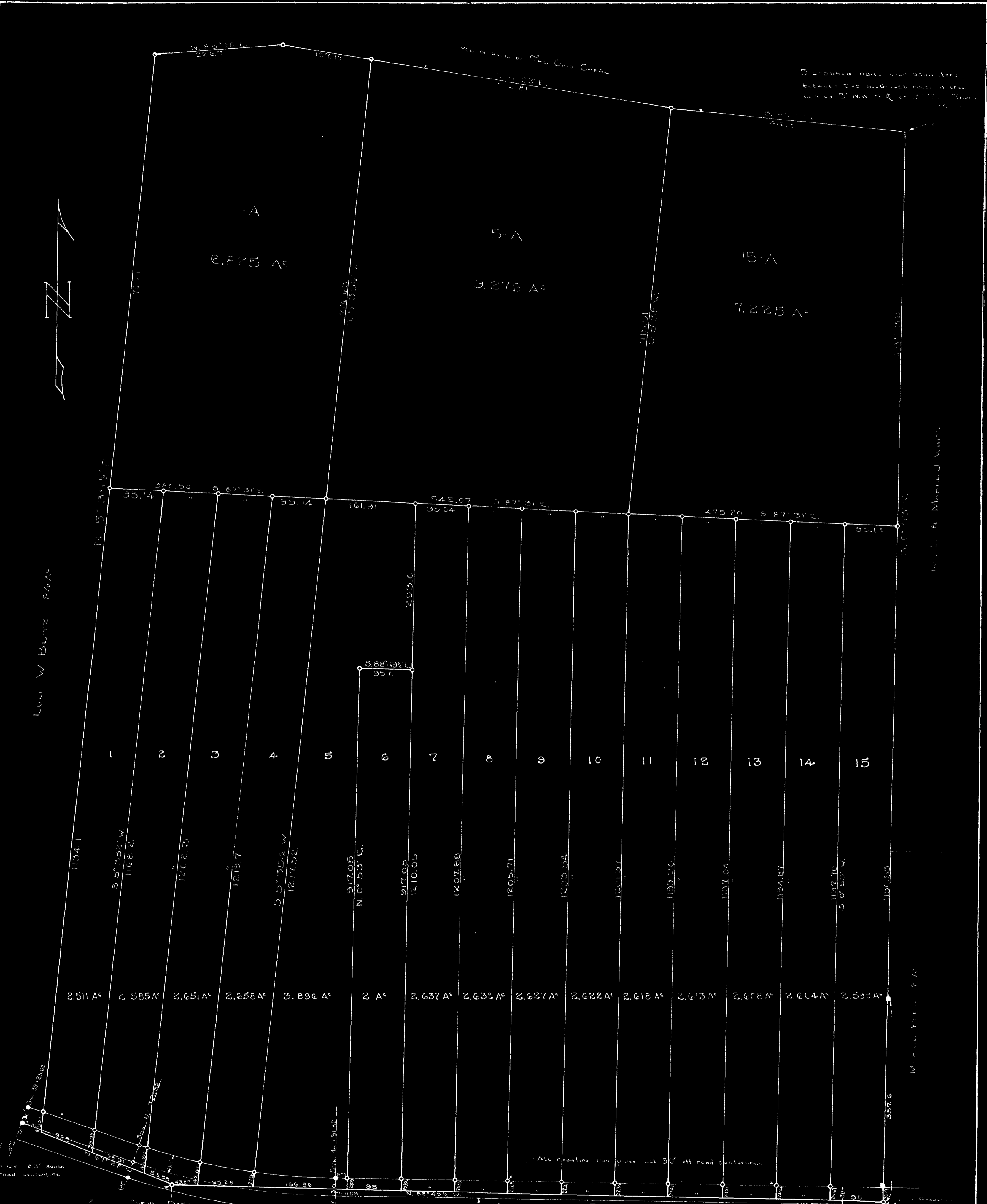


3 crossed rails over sandstone
between the southeast posts in tree
located 3' N.W. of Q. or 8' from corner



LUD W. BETZ 84A

100' x 100' 84A

100' x 100' 84A

CURVE DATA
L = 17° 57' L
D = 5'

Iron pipe set over original position of old stone at center of Section 27.

M. Jeannette McDowell's Groveport & Lithopolis Roads Parcel Plat

Being a part of Section 27, Township 11, Range 21, Madison Township, Franklin Co., Ohio.
Date: May, 1950 Scale: 1" = 100'

• Iron pin or spike found ○ Iron pipe set

1950 120 020 068 N GROVEPORT RD 1950 0458 003