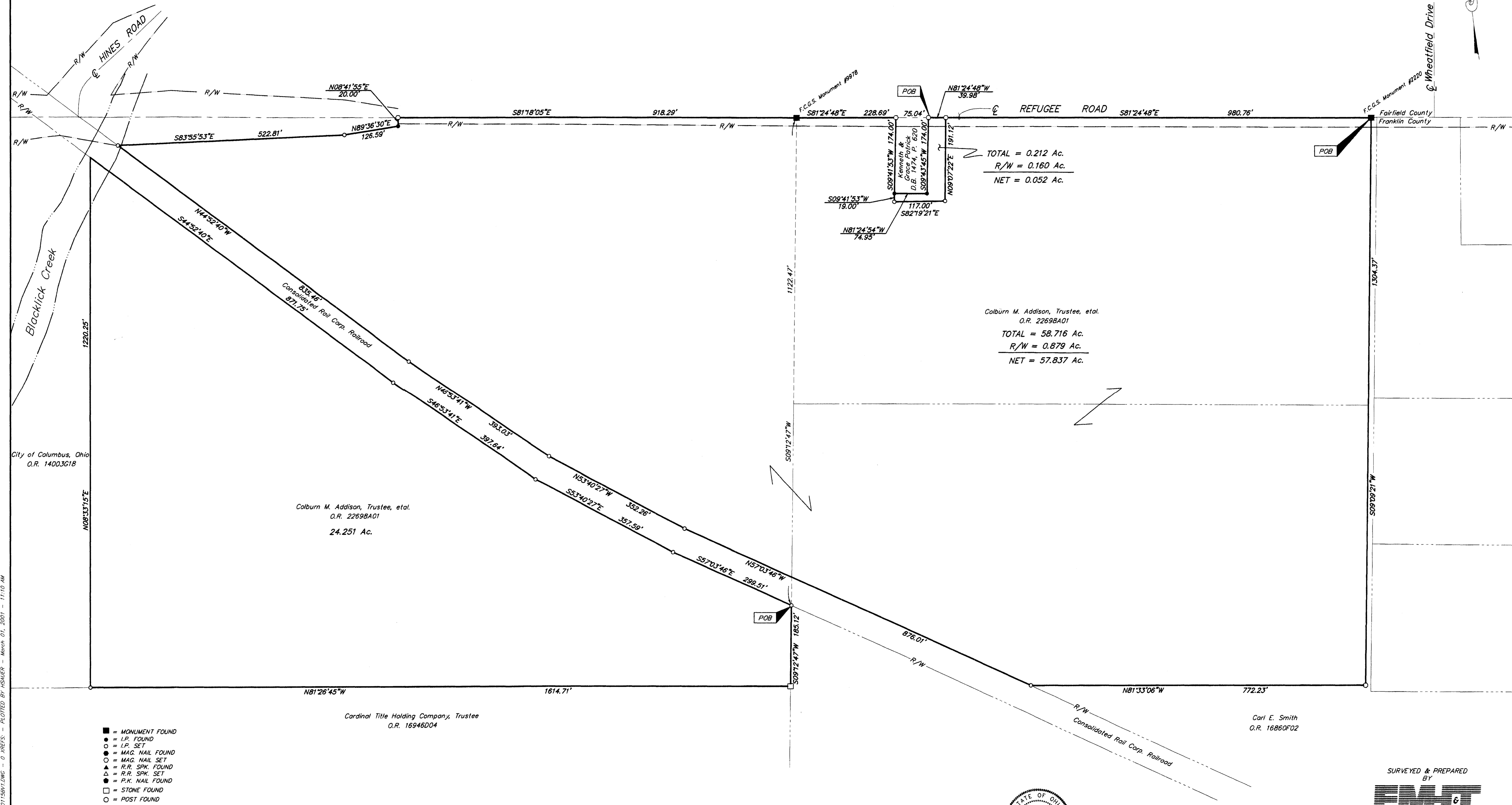
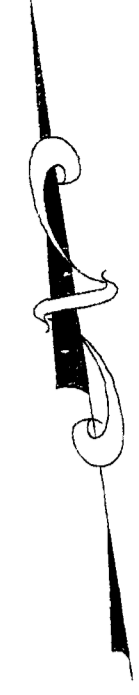
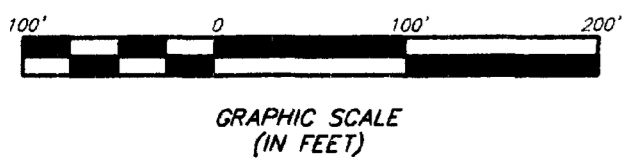


**SURVEY OF ACREAGE PARCELS**  
 SECTION 6, TOWNSHIP 15, RANGE 20, CONGRESS LANDS  
 CITY OF COLUMBUS, FRANKLIN COUNTY, OHIO



C:\PROJECTS\20001115\LONG\001\5B1\5B1.DWG - 0 WREYS - PLOTTED BY HSWUER - March 01, 2001 - 11:10 AM

- = MONUMENT FOUND
  - = I.P. FOUND
  - = I.P. SET
  - = MAG. NAIL FOUND
  - = MAG. NAIL SET
  - ▲ = R.R. SPK. FOUND
  - △ = R.R. SPK. SET
  - = P.K. NAIL FOUND
  - = STONE FOUND
  - = POST FOUND
- I.P.S. Set are 1 3/16" I.D. Iron pipe w/ cap inscribed EMH&T.



BASIS OF BEARINGS: Bearings are based on a portion of the centerline of Refugee Road having a bearing of S 81°24'48"E between F.C.G.S. 9978 and 2220.



By Matthew A. Kirk  
 Professional Surveyor No. 7865

SURVEYED & PREPARED BY  
**EMH&T** INC.  
 CONSULTING ENGINEERS & SURVEYORS  
 170 MILL STREET  
 GAHANNA, OHIO 43230  
 (614) 471-5150

SCALE: 1" = 100'  
 REVISIONS:  
 MARCH 1, 2001  
 MARCH 6, 2001