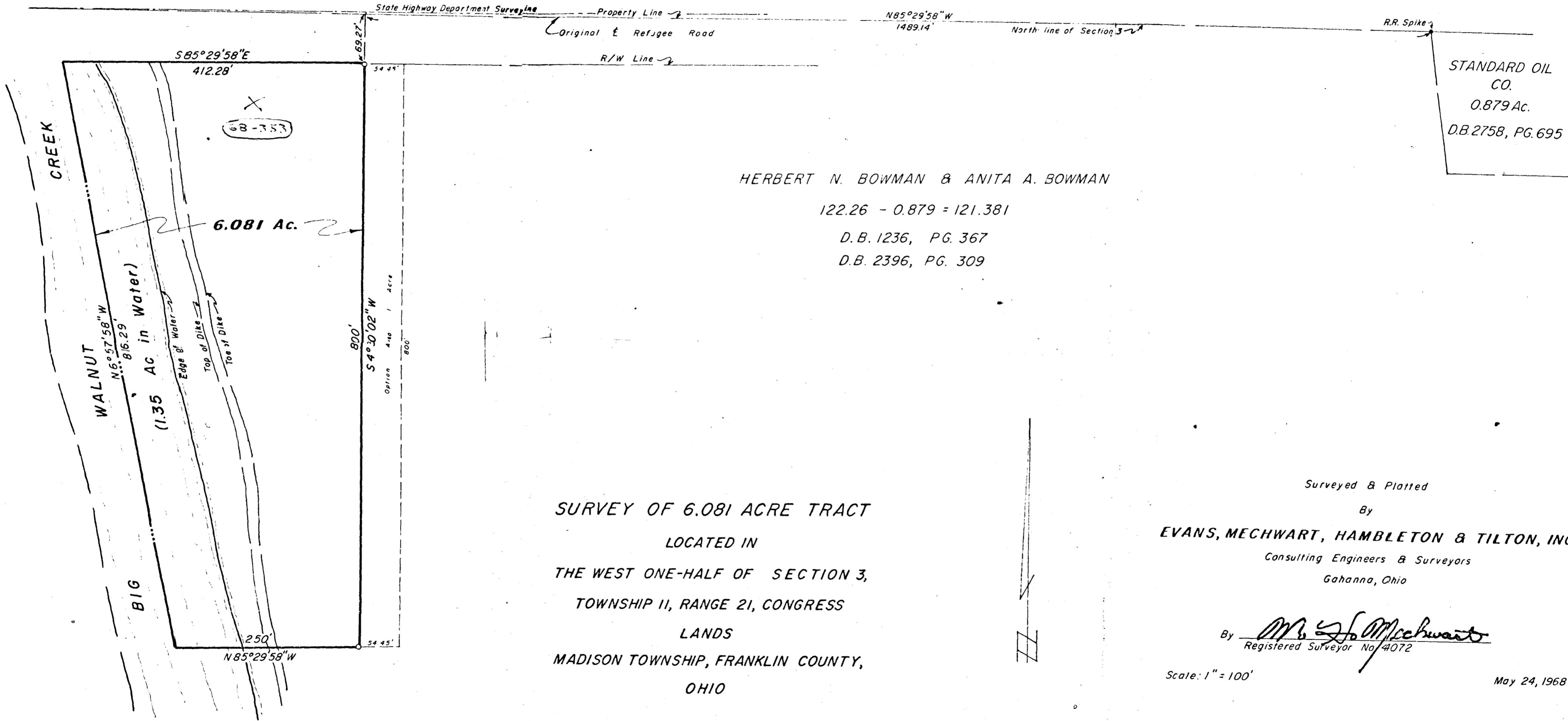


REFUGEE ROAD



STANDARD OIL
CO.
0.879 Ac.
D.B. 2758, PG. 695

HERBERT N. BOWMAN & ANITA A. BOWMAN
122.26 - 0.879 = 121.381
D.B. 1236, PG. 367
D.B. 2396, PG. 309

SURVEY OF 6.081 ACRE TRACT
LOCATED IN
THE WEST ONE-HALF OF SECTION 3,
TOWNSHIP 11, RANGE 21, CONGRESS
LANDS
MADISON TOWNSHIP, FRANKLIN COUNTY,
OHIO

Surveyed & Platted
By
EVANS, MECHWART, HAMBLETON & TILTON, INC.
Consulting Engineers & Surveyors
Gahanna, Ohio

By M. S. Mechwart
Registered Surveyor No. 4072

Scale: 1" = 100'

May 24, 1968

o = Iron Pin

3700 1120 122 089 5 REFUGEE RD 1968 0422 003