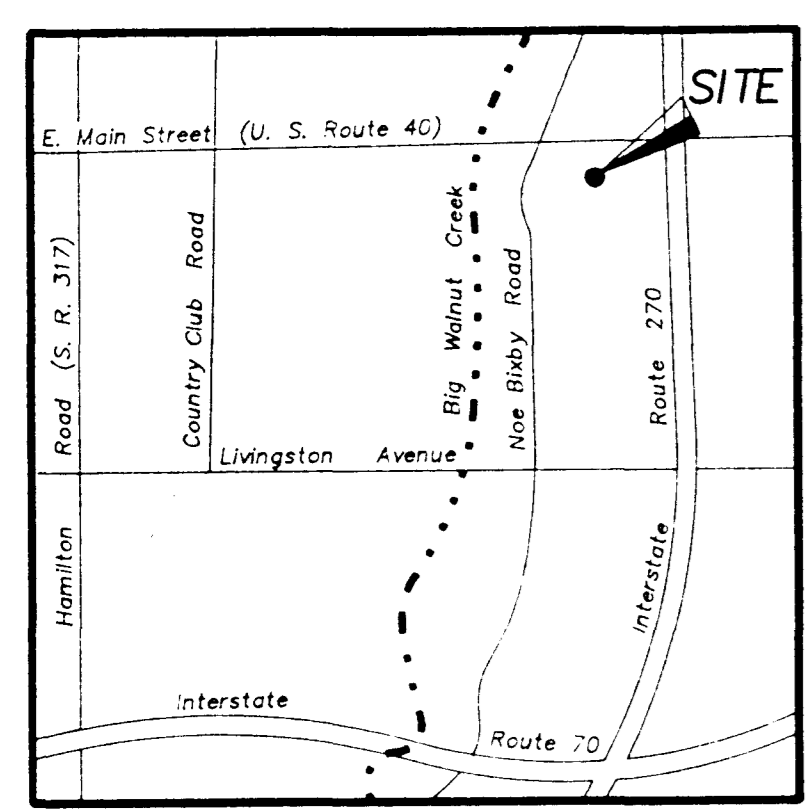


SURVEY OF HIBERNIA APARTMENTS

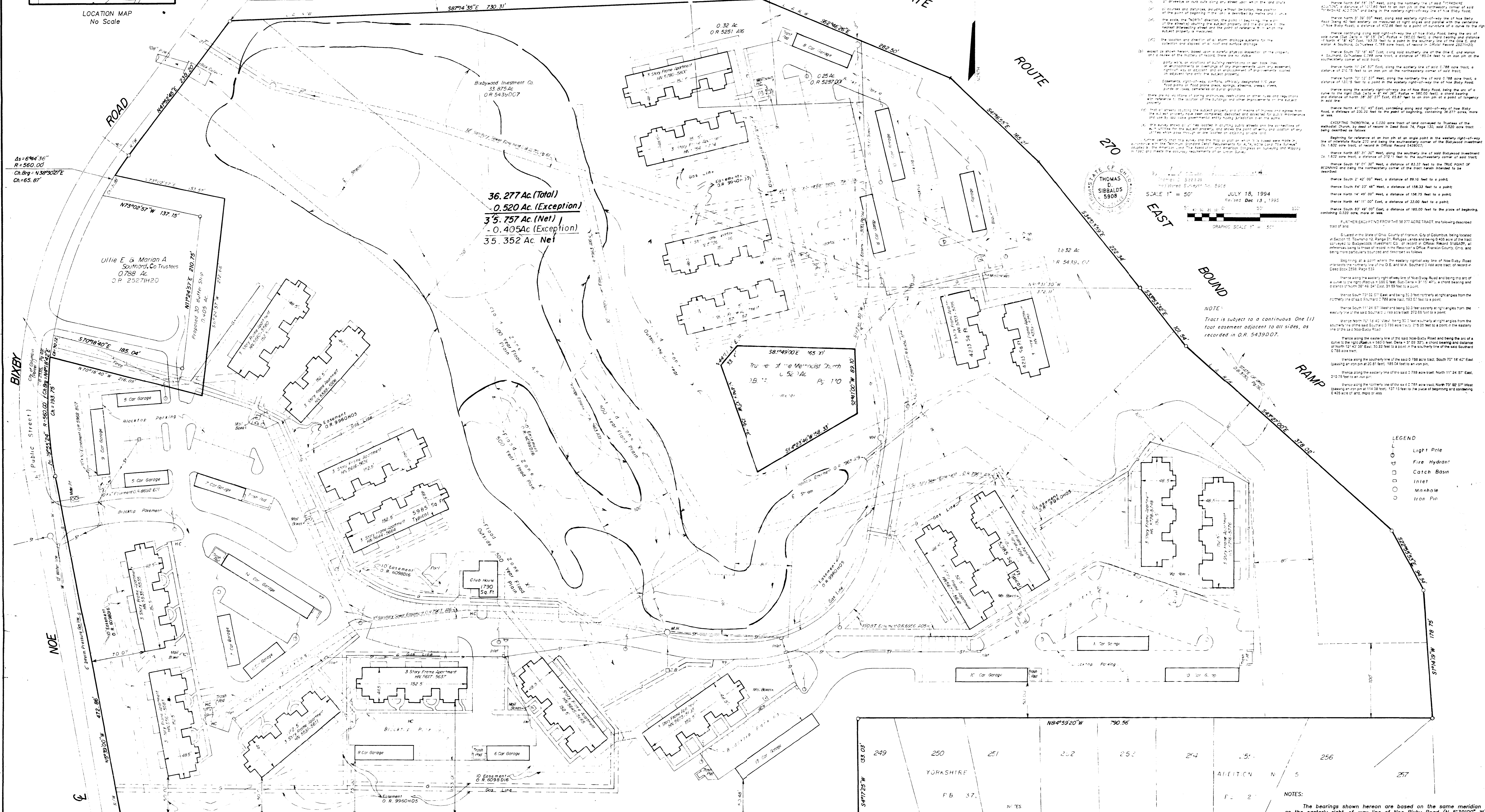
LOCATED IN SECTION 14 & 15, TOWNSHIP 12, RANGE 21
REFUGEE LANDS
CITY OF COLUMBUS, FRANKLIN COUNTY, OHIO

Surveyed & Plotted
EVANS, MECHWART, HAMBLETON, & TILTON INC.
CONSULTING ENGINEERS AND SURVEYORS
170 MILL STREET
GAHANNA, OHIO 43230
614/471-5150

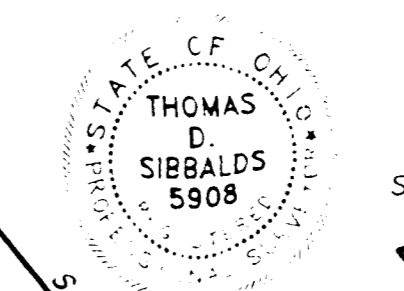


LOCATION MAP
No Scale

$4s = 6^{\circ}44'36''$
 $R = 560.00$
 $Ch. Br. = N38^{\circ}30'27''E$
 $Ch. = 65.87'$



36.277 Ac. (Total)
- 0.520 Ac. (Exception)
35.757 Ac. (Net)
- 0.405 Ac. (Exception)
35.352 Ac. Net



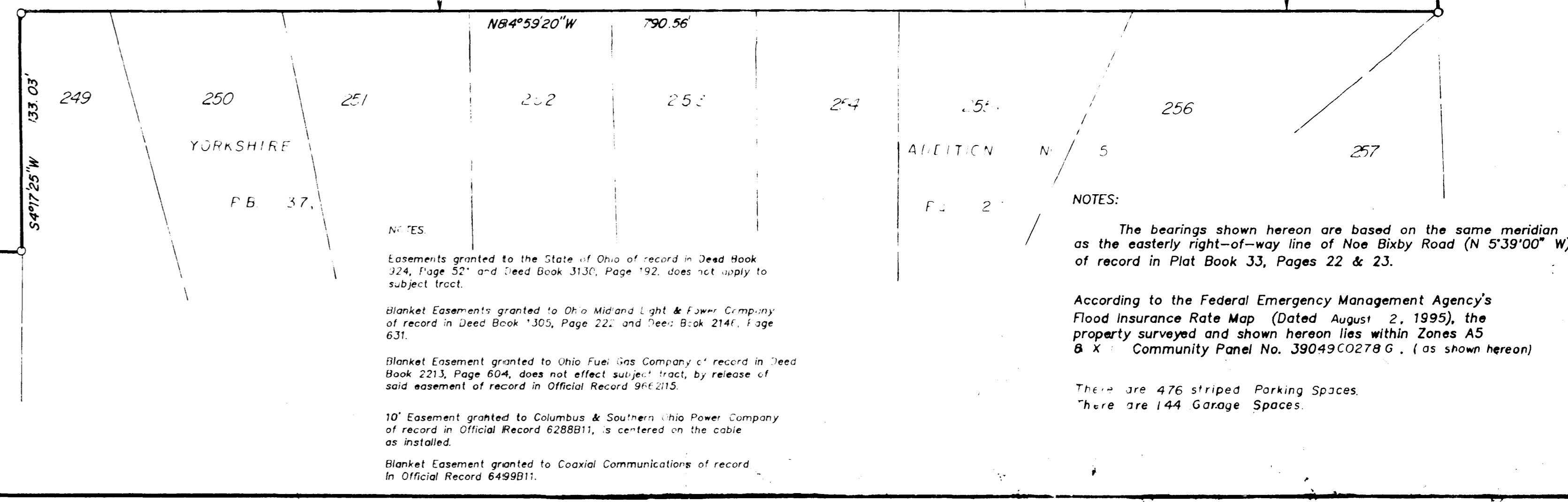
SCALE 1" = 50'
JULY 18, 1994
East Dec. 15, 1995

- LEGEND**
- Light Pole
 - ⊕ Fire Hydrant
 - Catch Basin
 - Inlet
 - Manhole
 - Iron Pin

NOTES:

The bearings shown hereon are based on the same meridian as the easterly right-of-way line of New Bixby Road (N 53°30'00" W) of record in Plat Book 33, Pages 22 & 23.

133	134	135	136	137	138	139	140	141	142	143	144
ADDITION											
Pg. 22-23											



NOTES:

Easements granted to the State of Ohio of record in Deed Book 224, Page 55 and Deed Book 313, Page 192, does not apply to subject tract.

Blanket Easements granted to Ohio Midland Light & Power Company of record in Deed Book 305, Page 22, and Deed Book 214, Page 631.

Blanket Easement granted to Ohio Fuel Gas Company of record in Deed Book 223, Page 604, does not affect subject tract, by reason of said easement of record in Official Record 914215.

10' Easement granted to Columbus & Southern Ohio Power Company of record in Official Record 628881, is centered on the cable as installed.

Blanket Easement granted to Coastal Communications of record in Official Record 649891.

According to the Federal Emergency Management Agency's Flood Insurance Rate Map (Dated August 2, 1995), the property surveyed and shown hereon lies within Zones A5 & B X Community Panel No. J9049C0278 G. (as shown hereon)

There are 476 striped Parking Spaces
There are 144 Garage Spaces