

BAUER, DAVIDSON & MERCHANT, INC.

CONSULTING ENGINEERS

255 GREEN MEADOWS DRIVE SOUTH

P.O. BOX 370

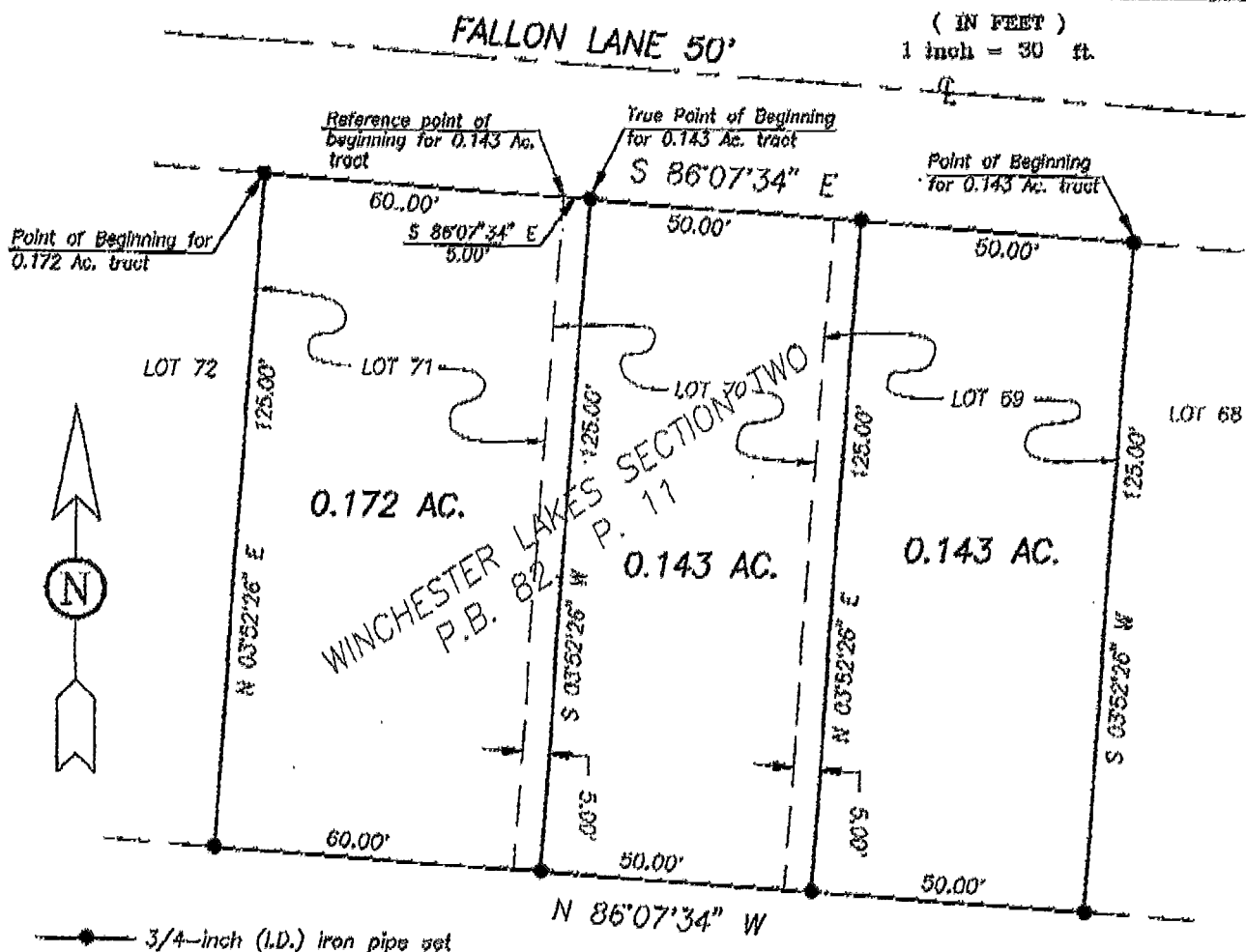
POWELL OHIO 43065

BOUNDARY MAP OF A 0.172 ACRE AND TWO 0.143 ACRE AREAS OF LAND IN LOTS 69, 70 AND 71 OF WINCHESTER LAKES SECTION TWO LOCATED ON THE SOUTHERLY SIDE OF FALLON LANE AND WEST OF WINSHIRE DRIVE, IN THE CITY OF COLUMBUS, COUNTY OF FRANKLIN, STATE OF OHIO

GRAPHIC SCALE



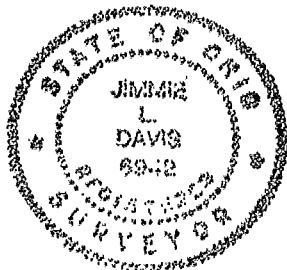
(IN FEET)
1 inch = 30 ft.



Situated in the State of Ohio, County of Franklin, City of Columbus, being in Section 24, Township 11, Range 21, Congress Lands and being 0.172, 0.143, and 0.143 acre areas of land, more or less, said 0.172, 0.143, and 0.143 acre areas being in Lots 69, 70, and 71, as the same are numbered and delineated upon the recorded plat of Winchester Lakes Section Two, of record in Plat Book 82, Page 11, Recorder's Office, Franklin County, Ohio.

All of the survey markers noted on this map were in place in October of 1995.

The bearings given on this map correspond to the bearing of S-86°07'34"E for the centerline of Fallon Lane, as shown on the said recorded plat of Winchester Lakes Section Two.



BAUER, DAVIDSON & MERCHANT, INC.
Consulting Engineers

By *Jimmie L. Davis*
Jimmie L. Davis
Professional Surveyor No. 6942

Scale: 1" = 30'
Order No. 2756-95
October 20, 1995

MANUSCRIPT 187 856 775 N-6-C