

C 46 B

# SURVEY OF 12.820 ACRE TRACT

LOCATED IN THE S.E. QUARTER OF SECTION 18, TOWNSHIP 15, RANGE 20  
MADISON TOWNSHIP, FRANKLIN COUNTY, OHIO

SCALE 1" = 200'

FEBRUARY 25, 1982

DEED BOOK 3387, PAGE 57

Ø = IRON PIN

PLAT BOOK \_\_\_\_\_, PAGE \_\_\_\_\_

**BOWEN**

**ROAD**

R.R. Spike

FAIRFIELD COUNTY

FRANKLIN COUNTY

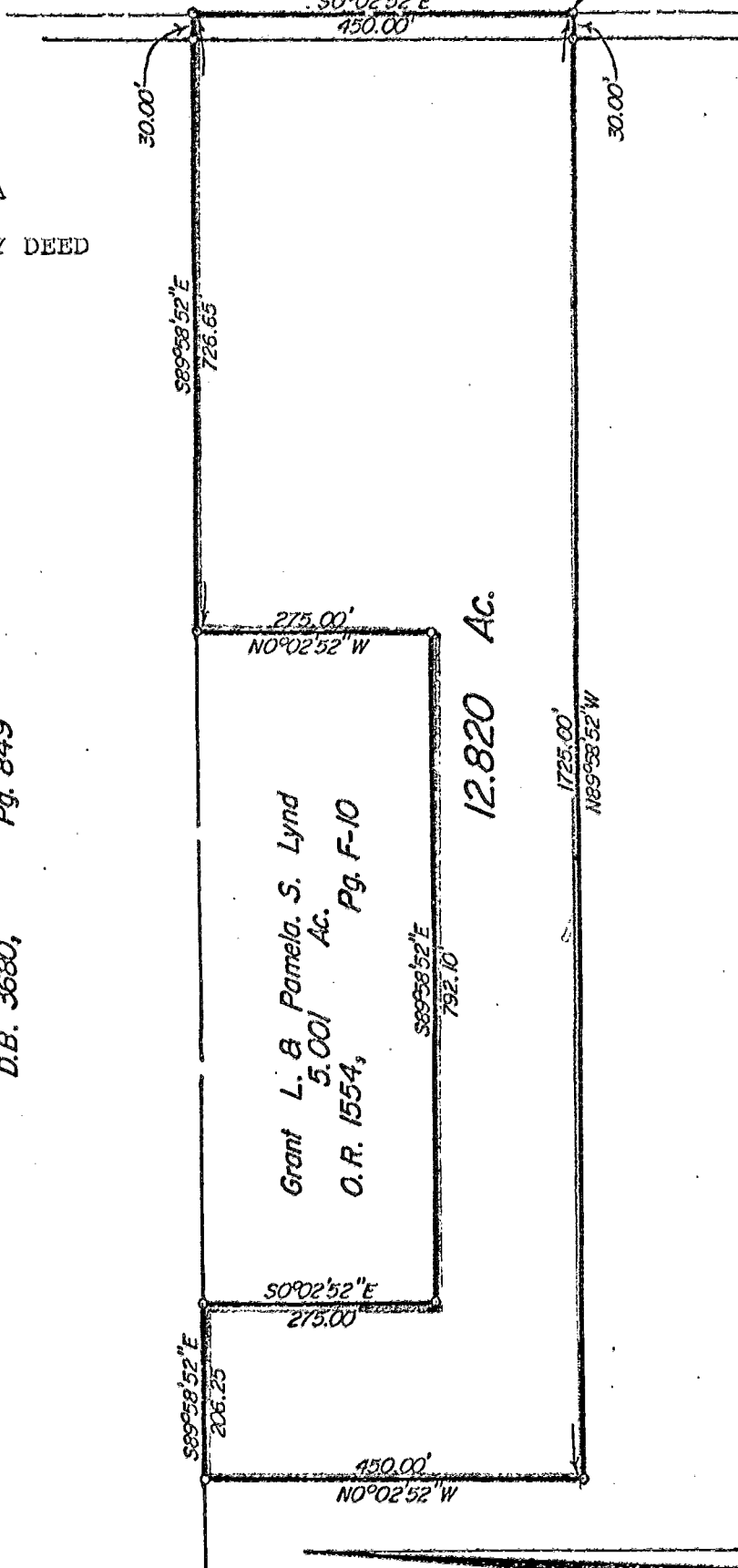


EXHIBIT A  
OF  
GENERAL WARRANTY DEED  
PAGE 2 OF 2

Jerry D. Hummel  
80.0 Ac.  
D.B. 3680, Pg. 849

Grant L. & Pamela S. Lynd  
5.001 Ac.  
O.R. 1554, Pg. F-10

12.820 Ac.

Southeast Franklin Investment Co.  
426.39 Ac.  
D.B. 3387, Pg. 57

08166510  
467B  
MADISON TWP

We hereby certify that the foregoing plat was prepared from an actual survey of the premises and shows the location of the boundaries.

EVANS MECHWART HAMBLETON & TILTON, INC.  
BY *James W. Caples*  
Registered Surveyor No. 5485