

EVANS MECHWART HAMBLETON & TILTON, INC.

CONSULTING ENGINEERS — SURVEYORS
GAHANNA, OHIO

SURVEY OF 5.824 ACRE TRACT

LOCATED IN SECTION 13, TOWNSHIP 11, RANGE 21
CONGRESS LANDS

CITY OF COLUMBUS, FRANKLIN COUNTY, OHIO

SCALE 1" = 100'

APRIL 19, 1983

DEED BOOK 3392, PAGE 445

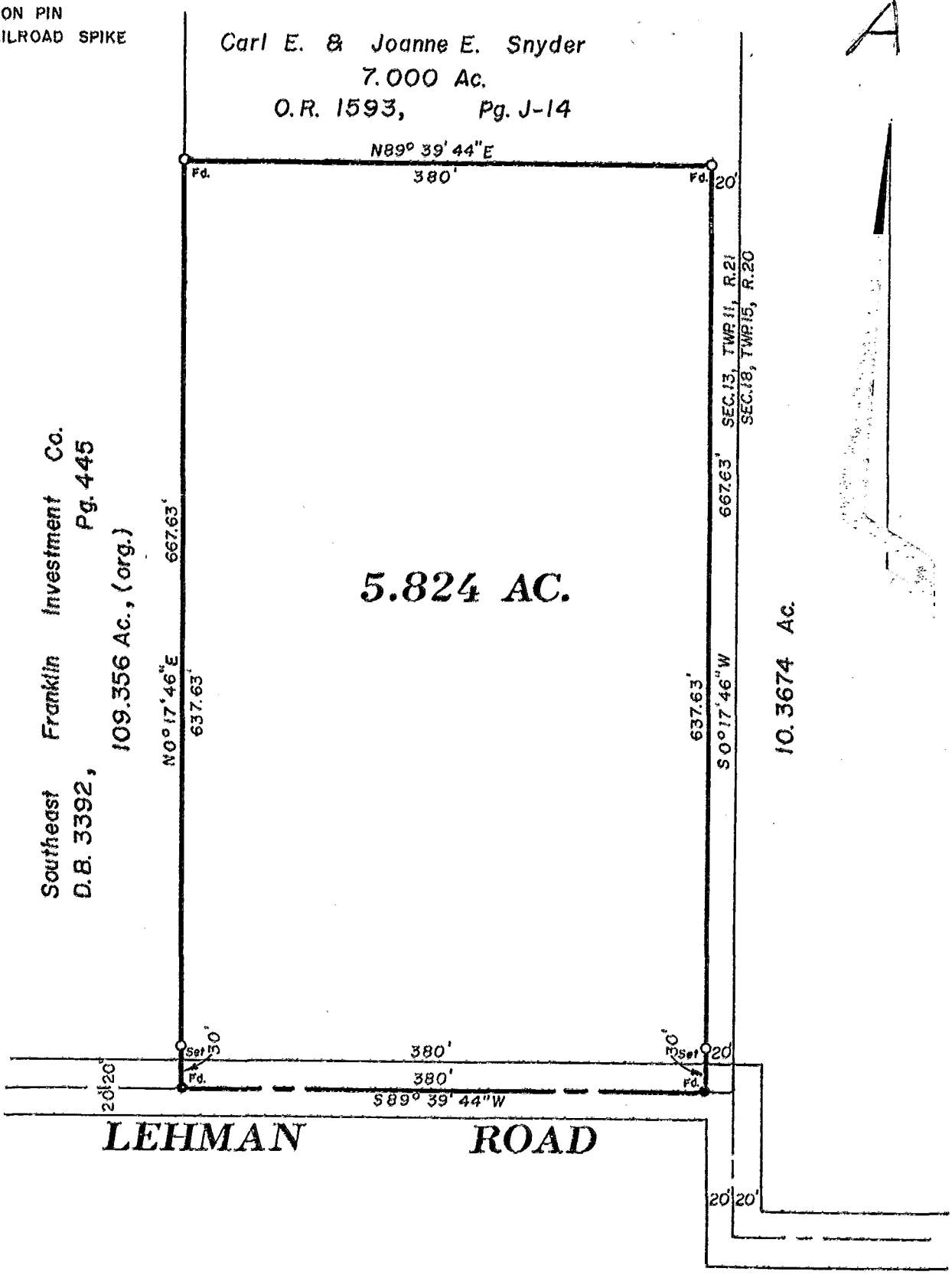
○ = IRON PIN
● = RAILROAD SPIKE

Carl E. & Joanne E. Snyder
7.000 Ac.
O.R. 1593, Pg. J-14

Southeast Franklin Investment Co.
Pg. 445
D.B. 3392,
109.356 Ac., (org.)

5.824 AC.

10.3674 Ac.



We hereby certify that the foregoing plat was prepared from an actual survey of the premises and shows the location of the boundaries.

EVANS MECHWART HAMBLETON & TILTON, INC.

BY E. E. Maddy
E. E. MADDY Registered Surveyor No. 4965

M.B. DISCU TWP.

87056800