



# SURVEY OF ACREAGE PARCELS

LOCATED IN  
SECTION 18, TOWNSHIP 15, RANGE 20  
CONGRESS LANDS  
CITY OF COLUMBUS, FRANKLIN COUNTY, OHIO

SCALE 1" = 200'

OCTOBER 25, 1995

IRON PIN

RECORD REFERENCES

O.R. 27488 G 17

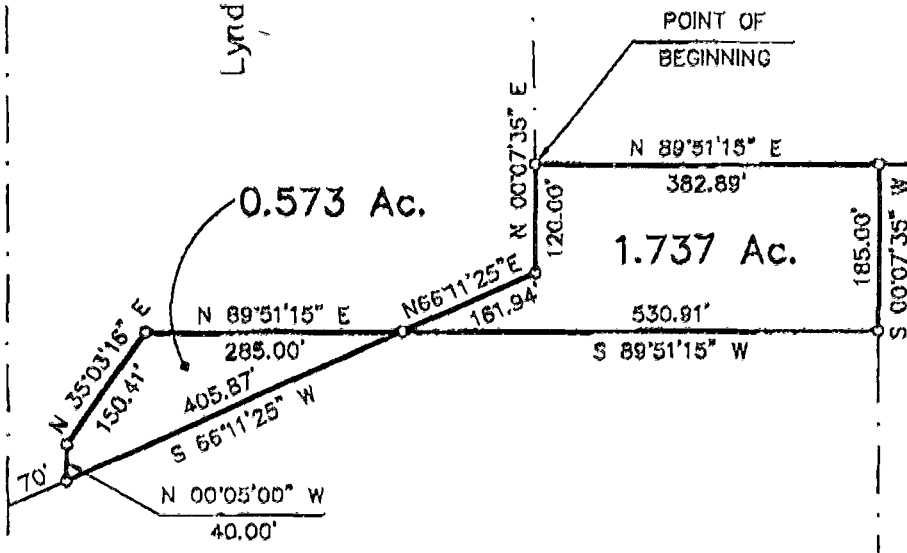
O.R. 29634 D 06



John T. & Rita J. Ricketts  
O.R. 2919 A 10

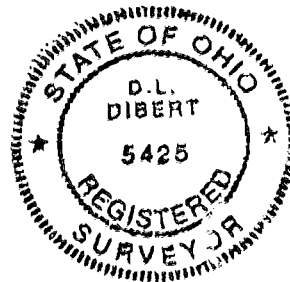
Lynd Land Development Co.  
O.R. 27488 G 17

William V. Corban  
28.839 Ac.  
O.R. 2440 H 05



Lehrman Road Associates  
21.501 Ac.  
O.R. 29634 D 06

Lynd Land Development Co.  
O.R. 27488 G 17



**BASIS OF BEARINGS :** The bearings shown hereon are based on a meridian in a bearing system in which the centerline of Lehman Road has a bearing of South 89°57'53" West as per Official Record 27488 G 17.

**E.M.H.&T. INC.**

By Donald L. Dibert  
Professional Surveyor No. 5425

MADISON  
528 771 88'