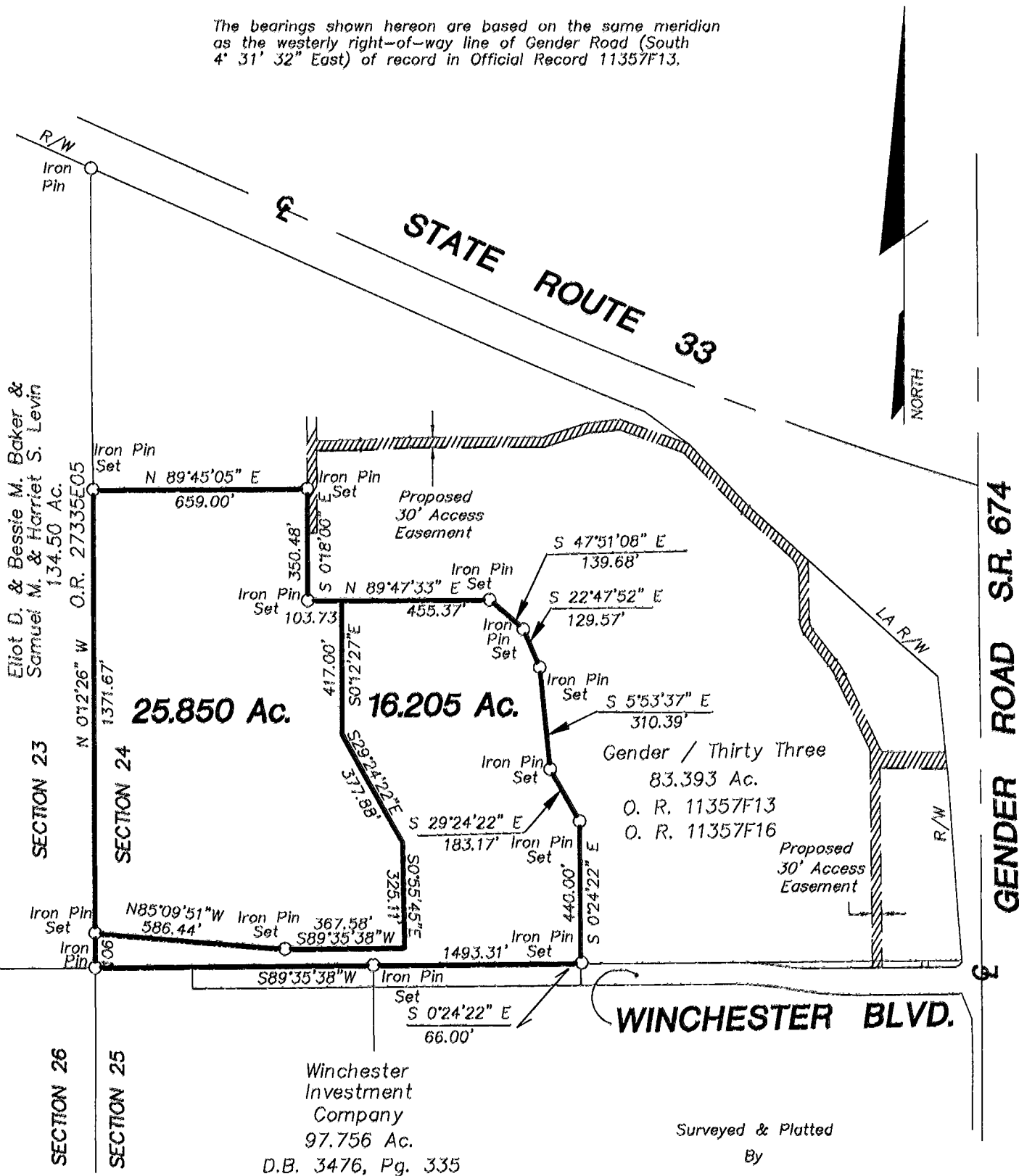


**SURVEY OF ACREAGE PARCELS
 LOCATED IN SECTION 24, TOWNSHIP 11, RANGE 21,
 CONGRESS LANDS
 VILLAGE OF CANAL WINCHESTER, FRANKLIN COUNTY, OHIO**

NOTE:

The bearings shown hereon are based on the same meridian as the westerly right-of-way line of Gender Road (South 4° 31' 32" East) of record in Official Record 11357F13.



Winchester Investment Company
 97.756 Ac.
 D.B. 3476, Pg. 335

Surveyed & Platted
 By

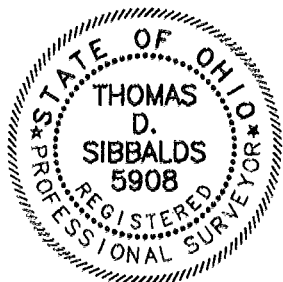
EVANS, MECHWART, HAMBLETON, & TILTON INC.
 CONSULTING ENGINEERS AND SURVEYORS
 170 MILL STREET
 GAHANNA, OHIO 43230
 614/471-5150

By Thomas D. Sibbalds
 Thomas D. Sibbalds
 Registered Surveyor No. 5908

SCALE 1" = 400' FEBRUARY 24, 1997



GRAPHIC SCALE 1" = 400'
 O = Iron Pin Set



MADISON 87 356 750
 87 356 725