



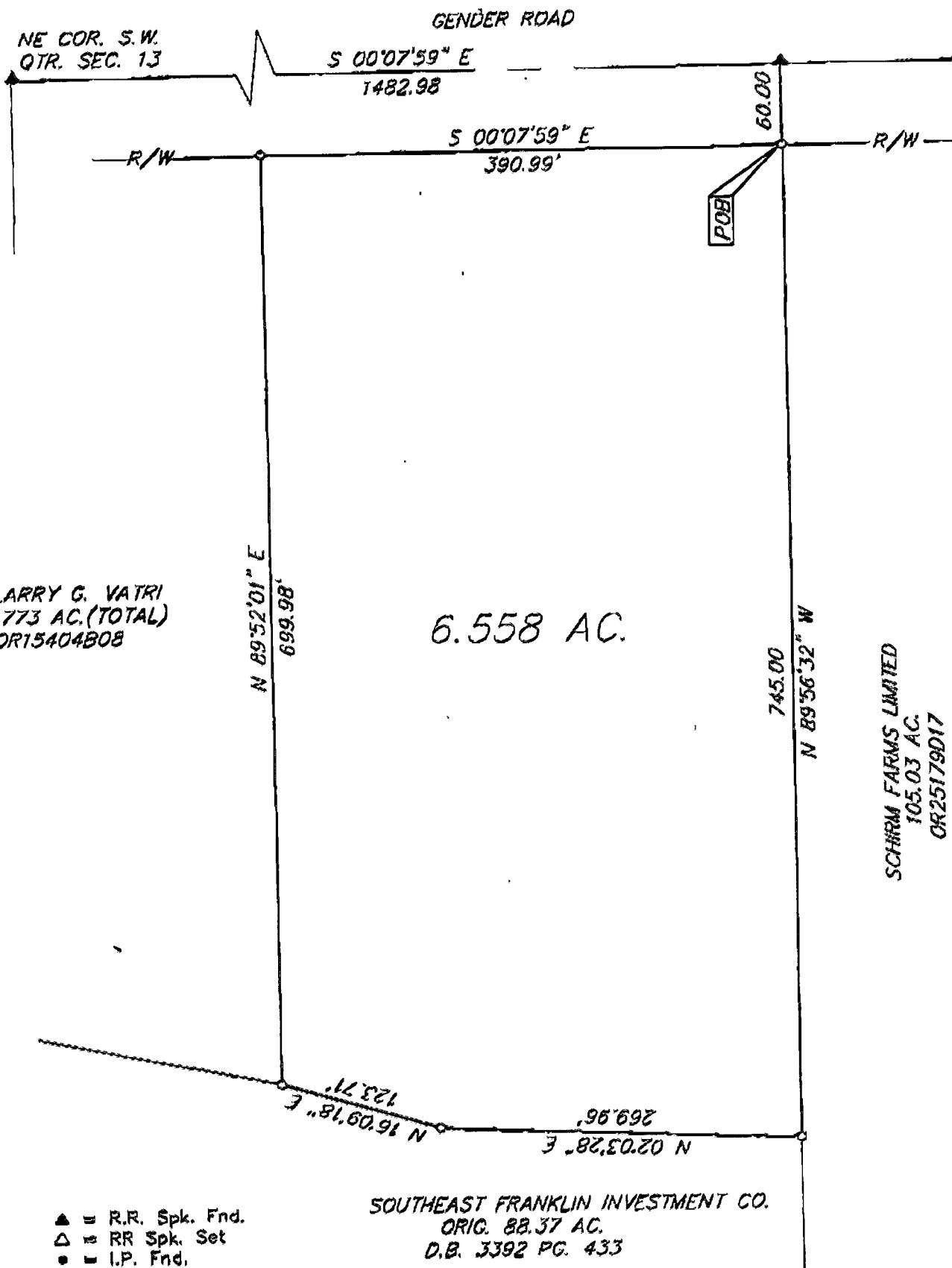
SURVEY OF 6.558 ACRES
S.W. QTR. SEC. 13, TWP 11, RNG. 21, CONGRESS LANDS
CITY OF COLUMBUS, FRANKLIN COUNTY, OHIO

003 979/3

SCALE 1" = 100'

FEBRUARY 23, 1995

RECORD REFERENCES PB 78, PG. 58



LARRY G. VATRI
4.773 AC. (TOTAL)
OR15404B08

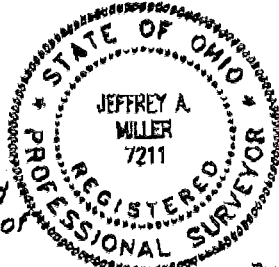
6.558 AC.

SCHIRM FARMS LIMITED
105.03 AC.
OR25179D17

- ▲ = R.R. Spk. Fnd.
- △ = RR Spk. Set
- = I.P. Fnd.
- = I.P. Set

I.P. Set are 3/4" O.D. 30" Iron pin w/cap inscribed E.M.H.&T.

SOUTHEAST FRANKLIN INVESTMENT CO.
ORIG. 88.37 AC.
D.B. 3392 PG. 433



E.M.H.&T. INC.

The bearings for this survey are based on the same bearing system as that of ESSEX PLACE SEC. 1 P.B. 78 PG. 58

By *Jeffrey A. Miller* 2-23-95
Professional Surveyor No. 7211

187 66 925
TWP 11

0-46-A