

January 25, 1993

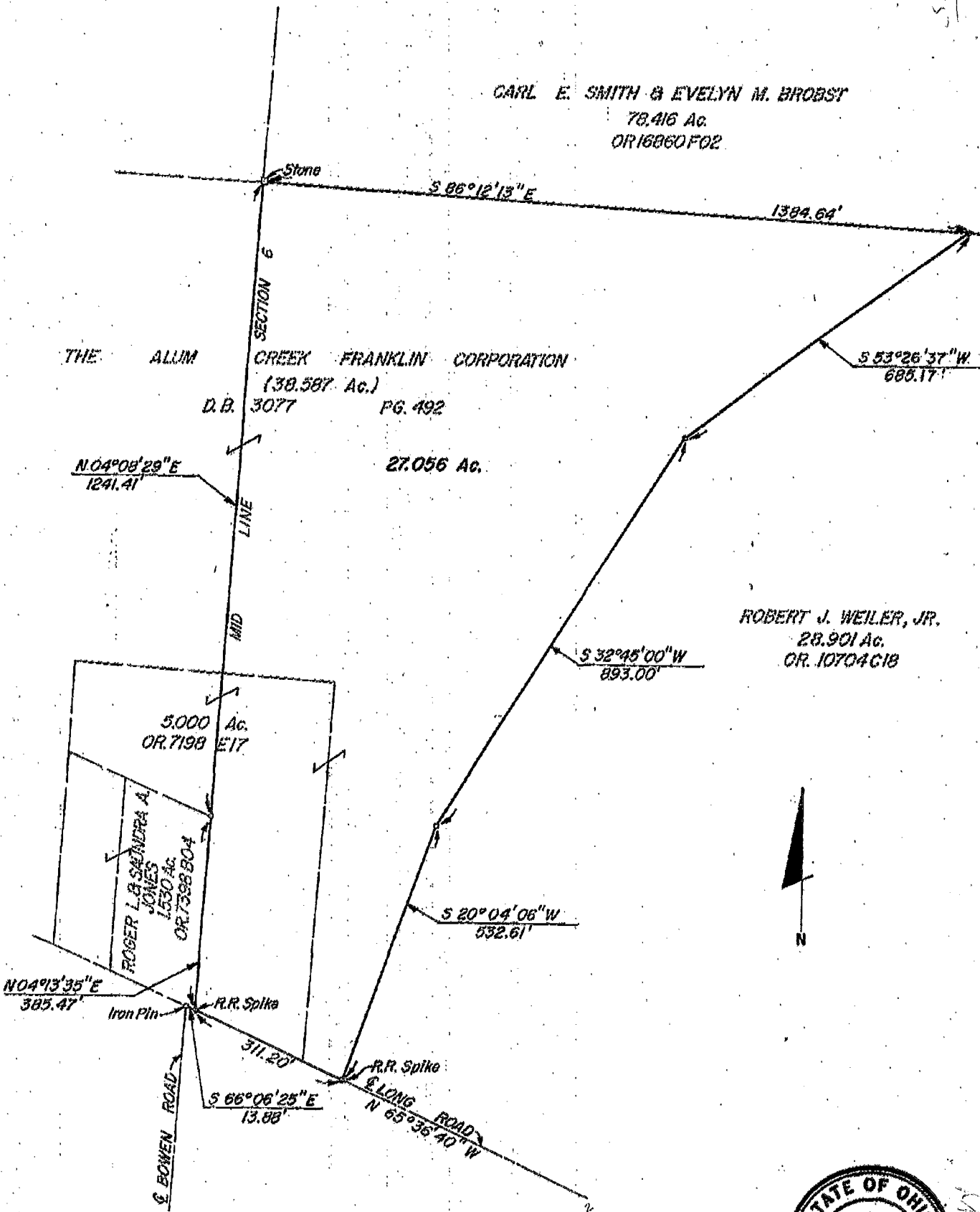
Handwritten notes: 6612696, 550725, 66166925

CARL E. SMITH & EVELYN M. BROBST
 78.416 Ac.
 OR 16860 F02

THE ALUM CREEK FRANKLIN CORPORATION
 (38.587 Ac.)
 D.B. 3077 PG. 492

27.056 Ac.

ROBERT J. WEILER, JR.
 28.901 Ac.
 OR. 10704 C18



BASIS OF BEARINGS:

The Bearings shown hereon are based upon the centerline of Long Road as being N 65° 36' 40" W.



Handwritten notes: MADISON TWP, O-43-B

E.M.H.&T. INC.

Lawrence E. Ball
 Professional Surveyor No. 6878