

**SURVEY OF ACREAGE PARCEL**  
 SEC 10 & 11, TWP 11, RNG 21  
 CONGRESS LANDS  
 CITY OF COLUMBUS, COUNTY OF FRANKLIN, STATE OF OHIO

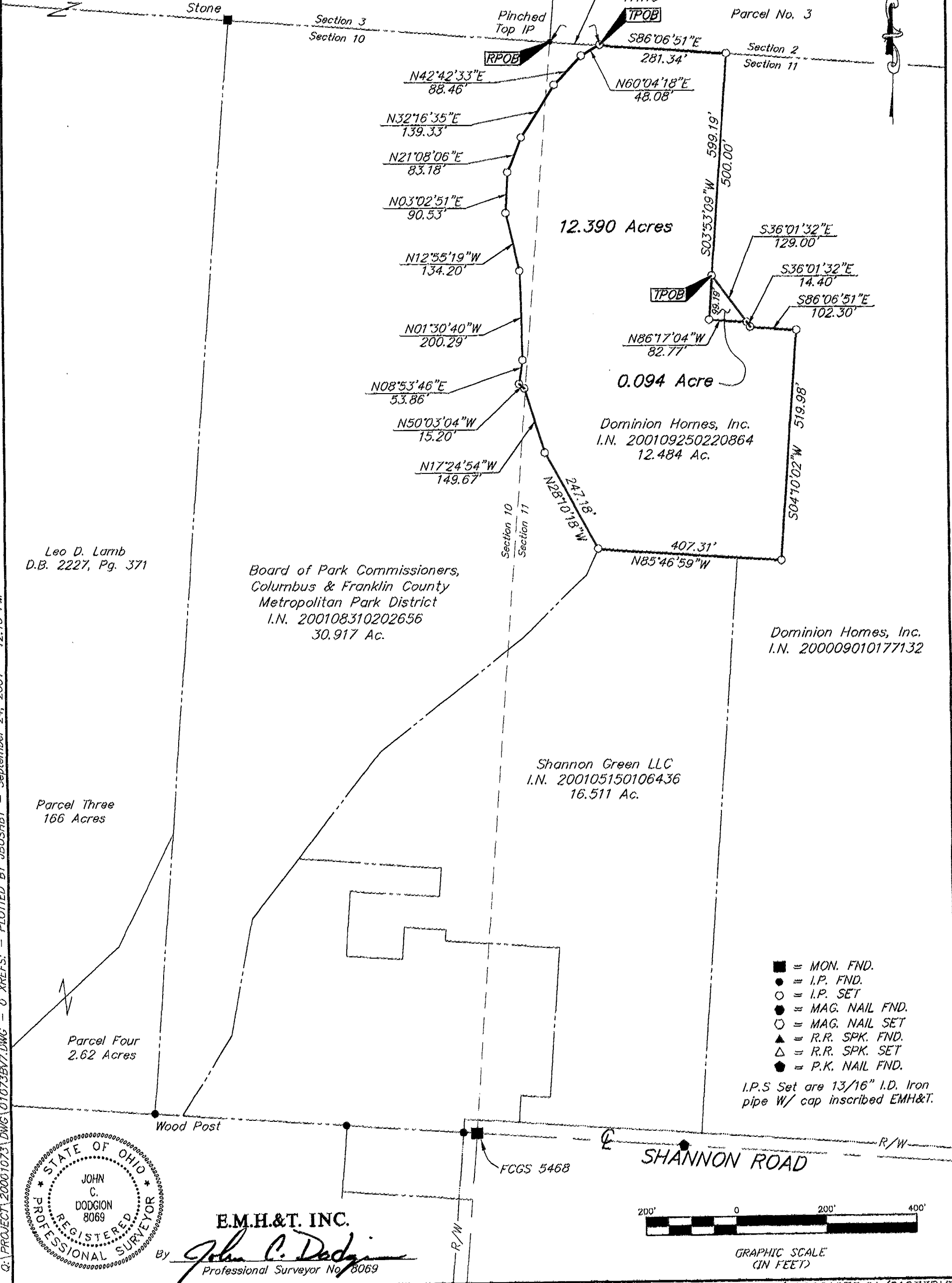
SCALE 1" = 200'

Bearings hereon are based on  
 N 04°03'12" E for the centerline  
 of Brice Road between FCGS Monument  
 Nos. 2251 & 8861.

SEPTEMBER 25, 2001  
 REVISED OCTOBER 9, 2001  
 REVISED NOVEMBER 21, 2001

Barbara Cullison  
 &  
 Edith L. Wildermuth  
 O.R. 29340120  
 Parcel No. 3

D.B. 2475, Pg. 328  
 9.583 Acres



12.390 Acres

0.094 Acre

Dominion Homes, Inc.  
 I.N. 200109250220864  
 12.484 Ac.

Dominion Homes, Inc.  
 I.N. 200009010177132

Shannon Green LLC  
 I.N. 200105150106436  
 16.511 Ac.

Board of Park Commissioners,  
 Columbus & Franklin County  
 Metropolitan Park District  
 I.N. 200108310202656  
 30.917 Ac.

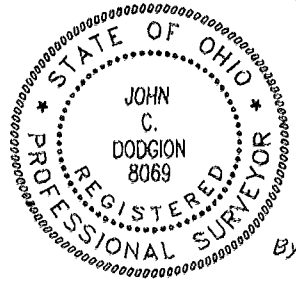
Leo D. Lamb  
 D.B. 2227, Pg. 371

Parcel Three  
 166 Acres

Parcel Four  
 2.62 Acres

- = MON. FND.
- = I.P. FND.
- = I.P. SET
- = MAG. NAIL FND.
- = MAG. NAIL SET
- ▲ = R.R. SPK. FND.
- △ = R.R. SPK. SET
- = P.K. NAIL FND.

I.P.S Set are 1 3/16" I.D. Iron pipe W/ cap inscribed EMH&T.



**E.M.H.&T. INC.**  
 Professional Surveyor No. 8069



Q:\PROJECT\20001073\DWG\01073BV7.DWG - G XREFS - PLOTTED BY JBUSHBY - September 24, 2001 - 12:19 PM