

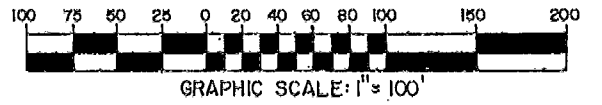
**SURVEY OF ACREAGE PARCELS**  
 LOCATED IN HALF SECTION 42, SECTION 24, TOWNSHIP 12, RANGE 21  
 AND HALF SECTION 31, SECTION 19, TOWNSHIP 16, RANGE 20  
 REFUGEE LANDS  
 CITY OF COLUMBUS, FRANKLIN AND FAIRFIELD COUNTIES, OHIO

SCALE 1" = 100'

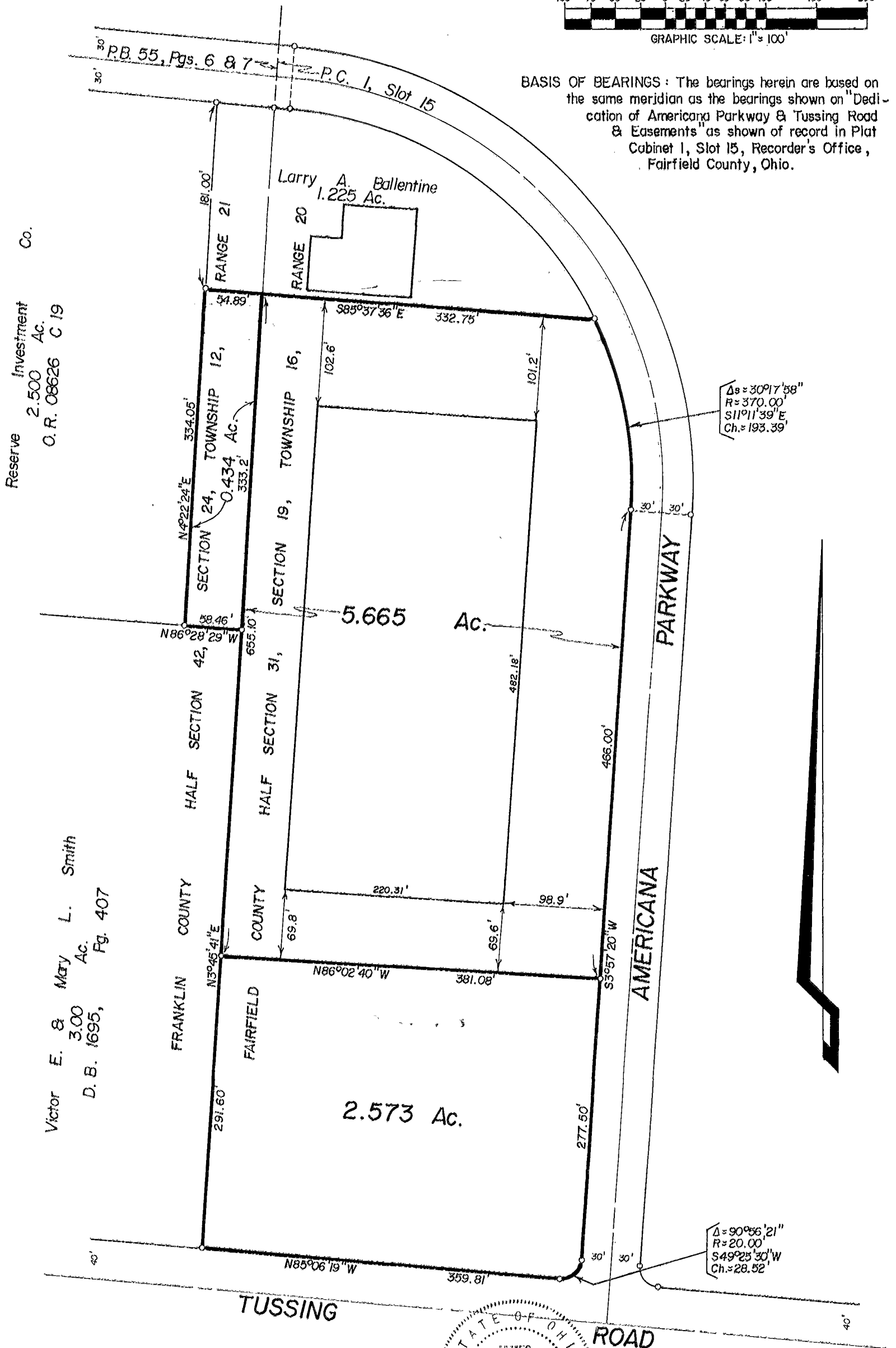
○ IRON PIN

DECEMBER 30, 1991  
 REVISED JANUARY 27, 1992

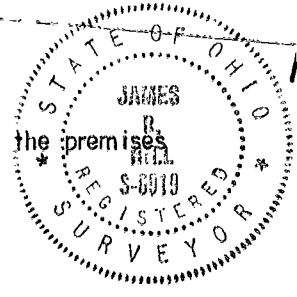
RECORD REFERENCES \_\_\_\_\_



BASIS OF BEARINGS: The bearings herein are based on the same meridian as the bearings shown on "Dedication of Americana Parkway & Tussing Road & Easements" as shown of record in Plat Cabinet 1, Slot 15, Recorder's Office, Fairfield County, Ohio.



We hereby declare that the foregoing plat was prepared from an actual survey of the premises and shows the location of the boundaries.



**E.M.H.&T. INC.**

By *James R. Hill*  
 Professional Surveyor No. 6919