



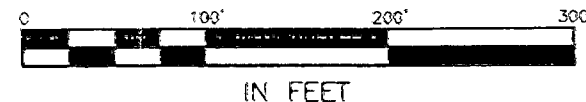
SURVEY OF 0.493 ACRE TRACT
 LOCATED IN THE NORTHWEST QUARTER OF
 SECTION 1, TOWNSHIP 11, RANGE 21
 CITY OF COLUMBUS, FRANKLIN COUNTY, OHIO

MADISON
 87 600 1950

SCALE 1" = 100'

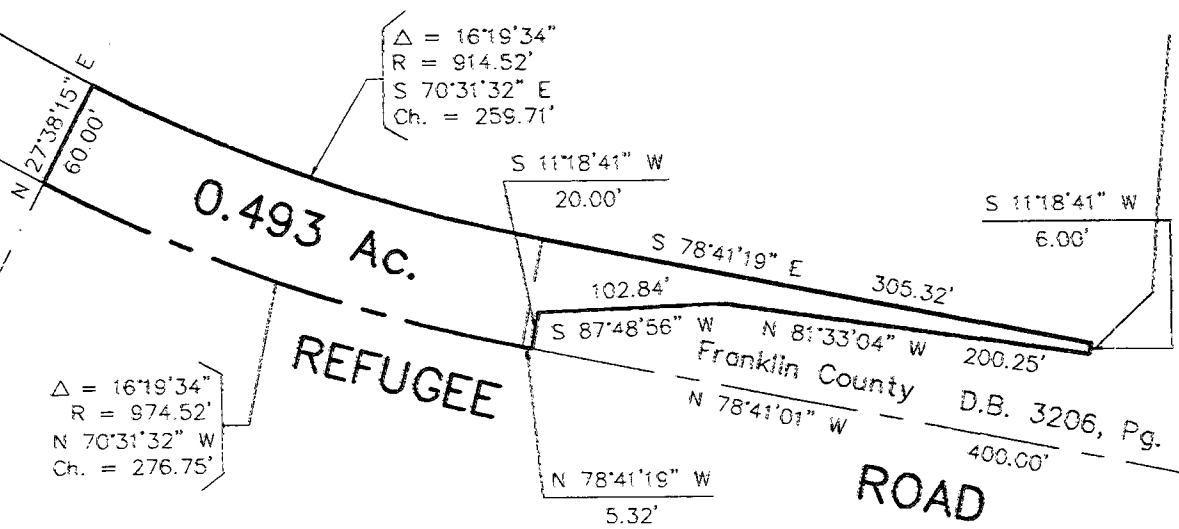
JULY 12, 1996

RECORD REFERENCES



COUNTRYVIEW VILLAGE
 SECTION 1
 P.B. 51, Pgs. 54 & 55

Joan Motz & Martha J. Lamp
 O.R. 2893 G 05



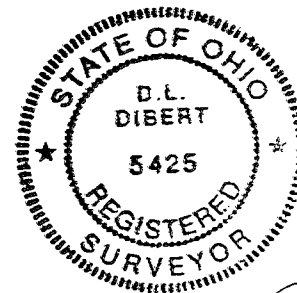
Robert B. Sabatino
 O.R. 15953 F 10

EXHIBIT
 Page 3 of 3
 ALL-STATE INTERNATIONAL

- ▲ = R.R. Spk. Fnd.
- △ = RR Spk. Set
- = I.P. Fnd.
- = I.P. Set

*P. Set are 3/4" O.D. Iron Pin
 1" long w/cap inscribed EMH&T.

BASIS OF BEARINGS : The bearings shown hereon are based on the same meridian as the bearings shown on the recorded plat of Countryview Village Section 1, of record in Plat Book 51, Pages 54 & 55, Recorder's Office, Franklin County, Ohio.



E.M.H.&T. INC.

By Ronald P. Sabatino
 Professional Surveyor No. 5425