

Bearings are based upon the road plan Gender-Wright-Brice Interconnector, on file in the Franklin County Engineer's Office.

O-105-B

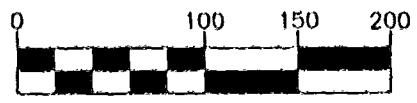
SITUATED IN THE STATE OF OHIO, COUNTY OF FRANKLIN,
CITY OF COLUMBUS, HALF SECTION 44, SECTION 25, C
TOWNSHIP 12, RANGE 21, REFUGEE LANDS.

LEGEND

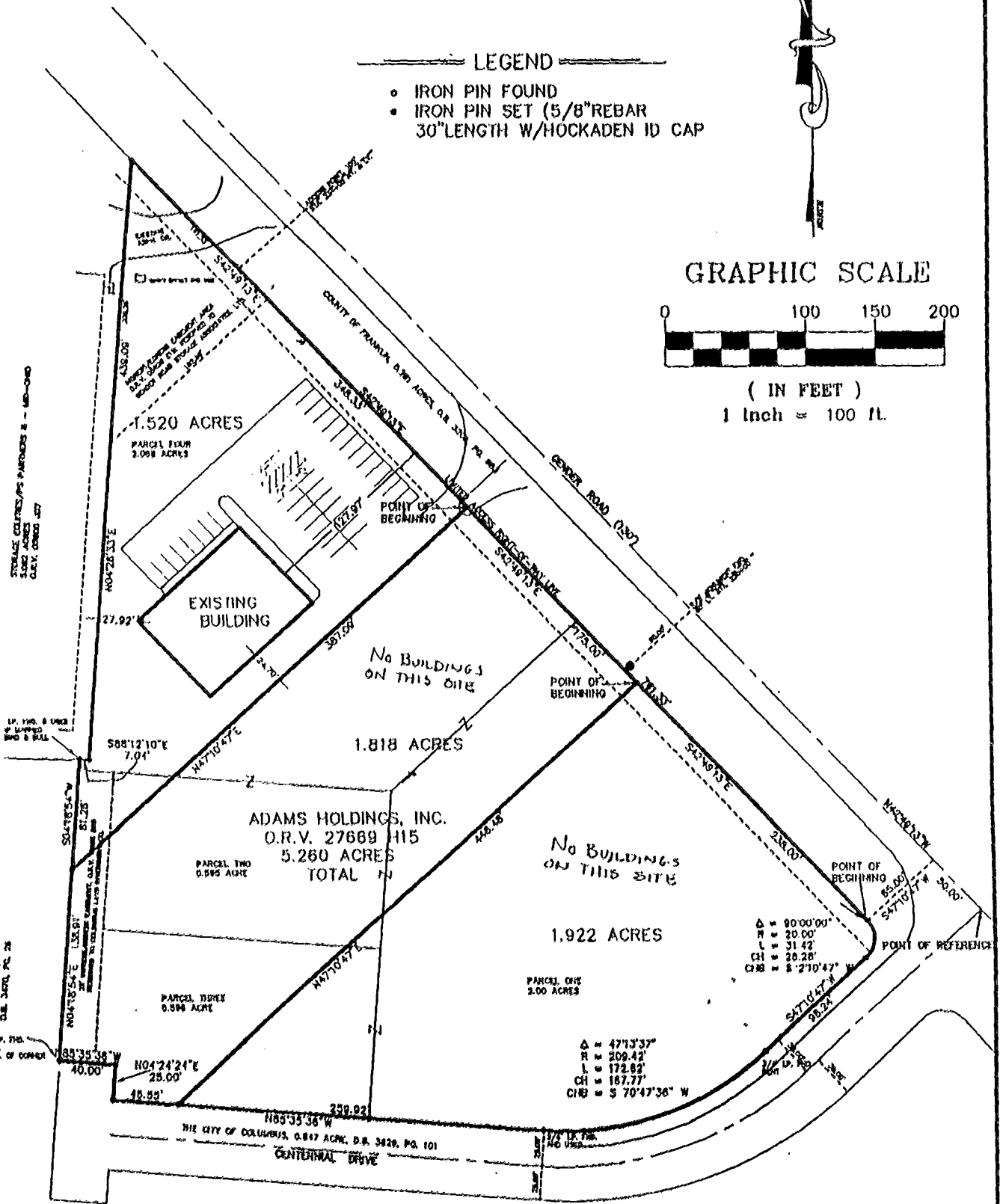
- IRON PIN FOUND
- IRON PIN SET (5/8" REBAR 30" LENGTH W/HOCKADEN ID CAP)



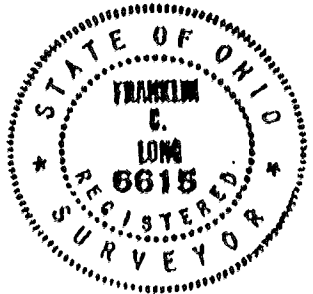
GRAPHIC SCALE



(IN FEET)
1 Inch = 100 ft.



NOTE: THIS EXHIBIT WAS PREPARED WITHOUT THE BENEFIT OF A TITLE POLICY, AND IS SUBJECT TO ANY FACTS REVEALED BY AN EXAMINATION OF SUCH.



HOCKADEN & ASSOCIATES, INC.
Consulting Engineers
Frank C. Long 5/30/95
Frank C. Long
Professional Surveyor No. 6615
Reviewed 6/30/95

DESCRIPTION	LOT SPLIT
LOCATION	NORTH OF CENTENNIAL DRIVE SOUTH OF GENDER ROAD
CLIENT	JOE ADAMS
PREPARED BY	HOCKADEN AND ASSOCIATES, INC. CONSULTING ENGINEERS 883 H. CASSADY AVENUE COLUMBUS, OHIO 43219 (614) 252-0993 FAX 252-0444
DRAWN BY	PL
CHECKED BY	PL
DRAWN NO.	40225
DATE	5/24/95
AREA NO.	47-1
SHEET	1 OF 1

FILED 187 666-975 O-105-B