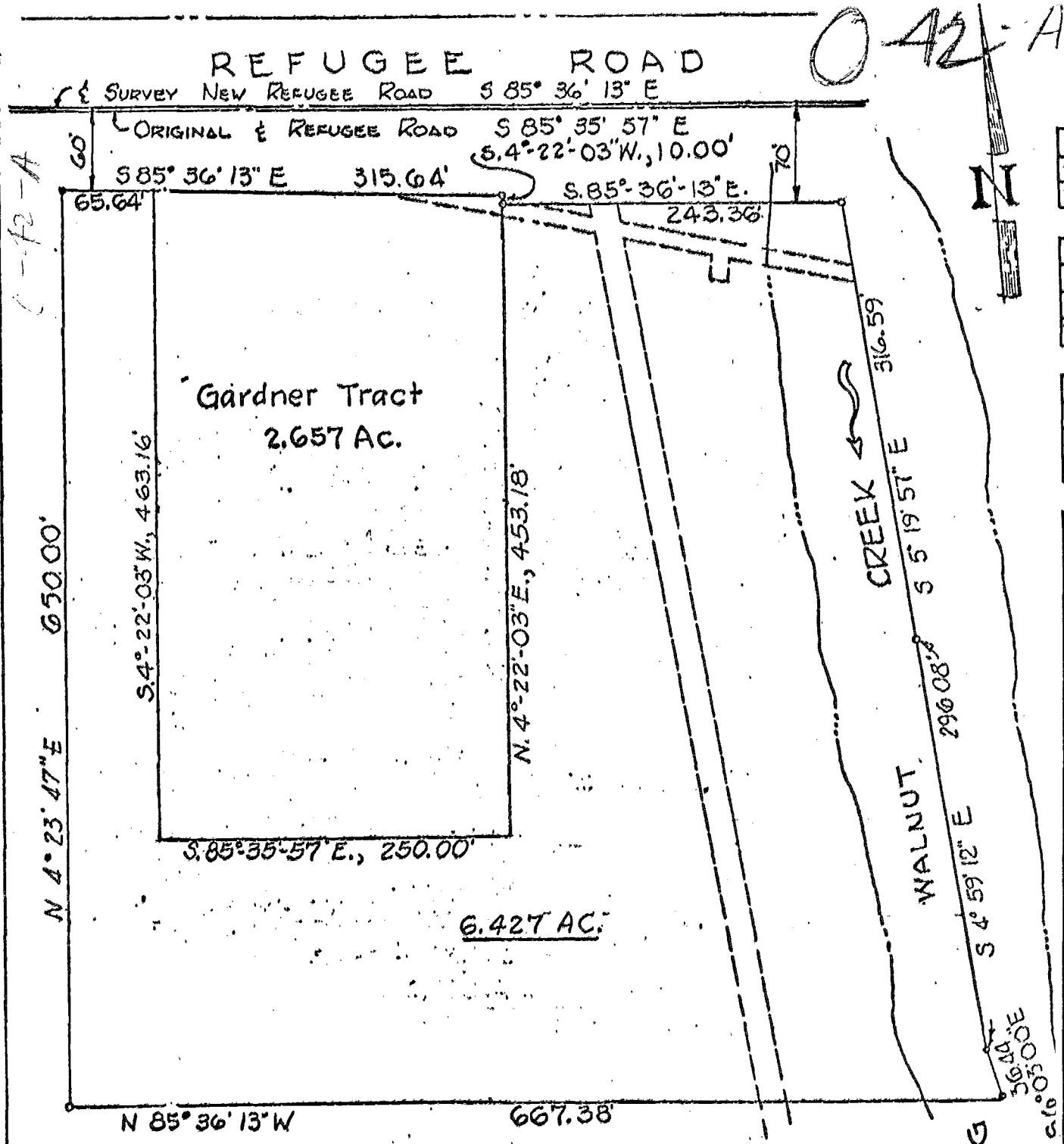


MADISON Twp



42-A

C-12-A

3700
1129
029
097
5
REFUGEE
R
C
A
D
1971
0421
003

Harold A. Glassburn
REG. SURVEYOR No. 4202 Ohio

CLUB EAST
Plat of 6.427 ACRES
City of Columbus, Ohio
Prepared for JAS R. Trueman & Assoc.
by Burgess & Niple, Limited

Scale: 1" = 100' Date: 4-20-71

26356775
66-12-1-12

56.3