

EVANS MECHWART HAMBLETON & TILTON, INC.

CONSULTING ENGINEERS — SURVEYORS
GAHANNA, OHIO

SURVEY OF ACREAGE PARCELS LOCATED IN SECTION 23, TOWNSHIP 12, RANGE 21 REFUGEE LANDS

C-104 - C.

CITY OF COLUMBUS, FRANKLIN COUNTY, OHIO

SCALE 1" = 100'



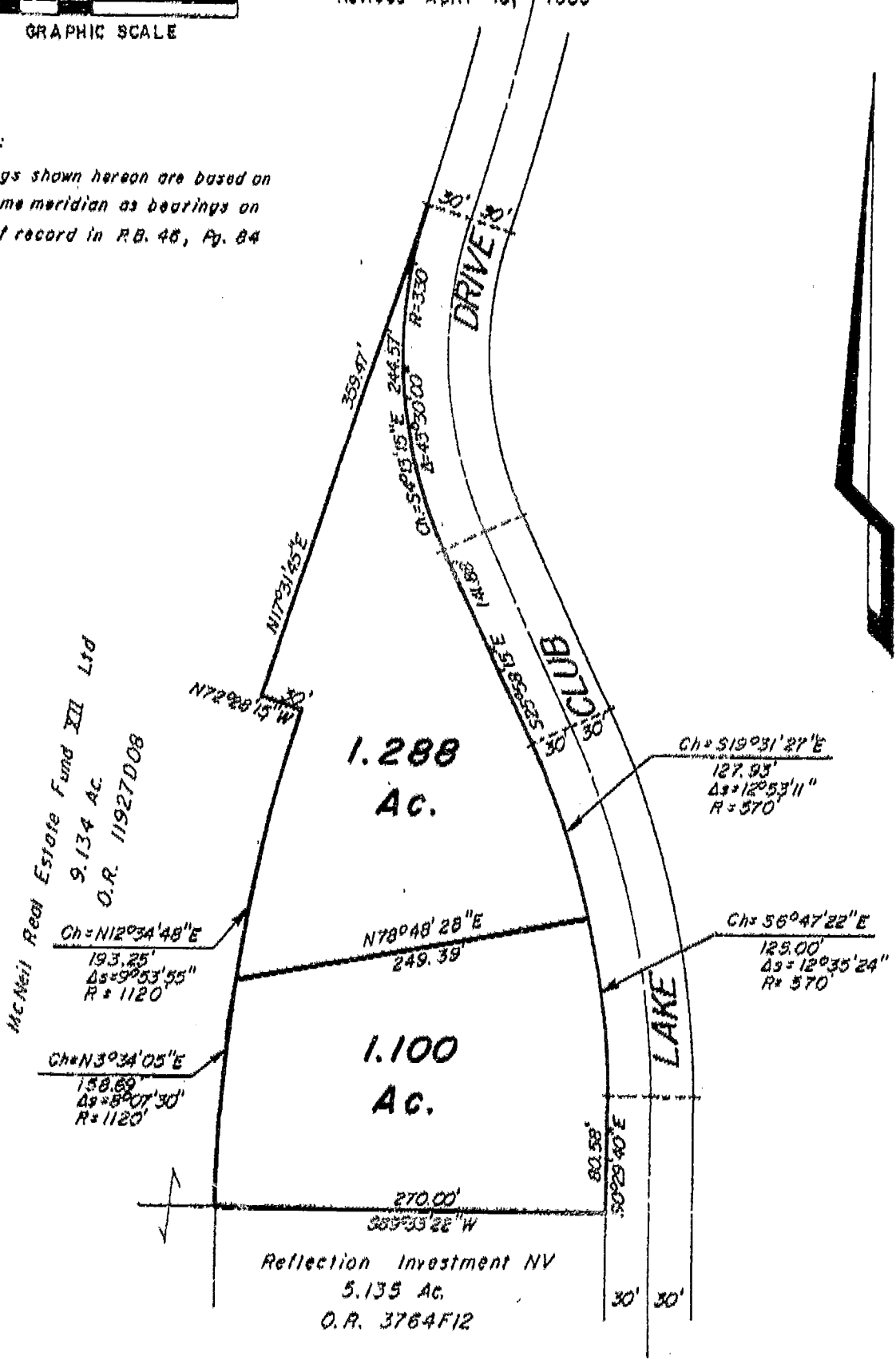
DECEMBER 15, 1983

Revised February 15, 1989
Revised April 18, 1989

DEED BOOK _____, PAGE _____

PLAT BOOK _____, PAGE _____

NOTE:
Bearings shown hereon are based on the same meridian as bearings on plat of record in R.B. 48, Pg. 84



McNeil Real Estate Fund XII Ltd
9.134 AC.
O.R. 11927D08

**1.288
Ac.**

**1.100
Ac.**

Reflection Investment NV
5.135 Ac.
O.R. 3764F12

We hereby certify that the foregoing plat was prepared from an actual survey of the premises and shows the location of the boundaries.

EVANS MECHWART HAMBLETON & TILTON, INC.

BY Thomas D. Sibbald
Registered Surveyor No. 5908