

# SURVEY OF ACREAGE PARCEL

LOCATED IN HALF SECTION 42, SECTION 24, TOWNSHIP 12, RANGE 21,

REFUGEE LANDS

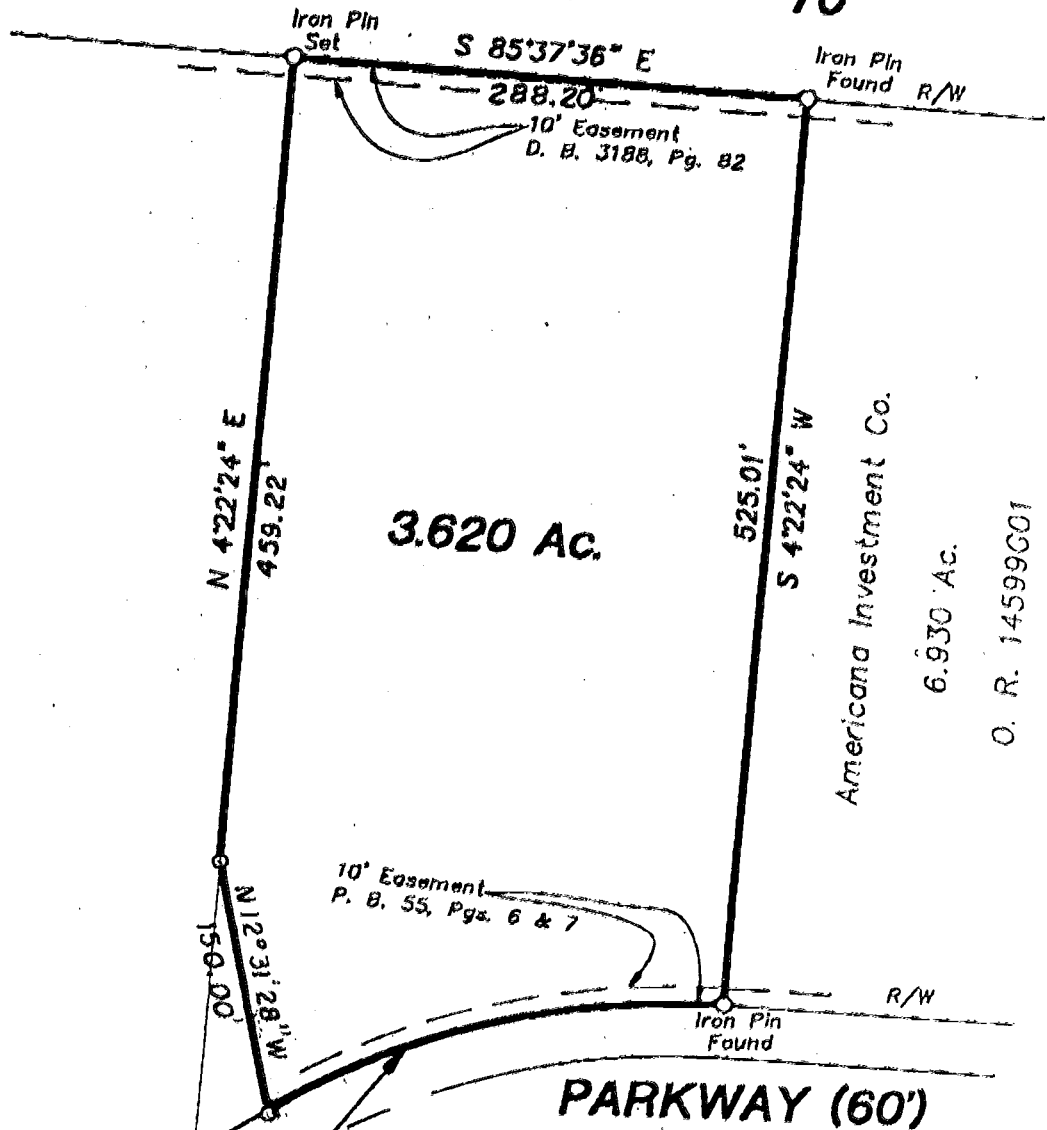
CITY OF COLUMBUS, FRANKLIN COUNTY, OHIO

840-181207

## INTERSTATE ROUTE 70

The Kobacker Company  
 15.870 Ac.  
 O. R. 17045F18

Americana Investment Co.  
 6.930 Ac.  
 O. R. 14599G01

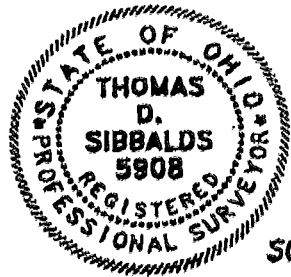


10' Easement  
P. B. 55, Pgs. 6 & 7

Ch Brg = S76°44'36" W  
 Ch = 256.65'  
 R = 430.00'  
 Δs = 34°43'38"

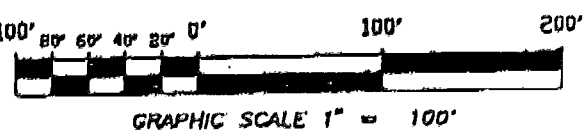
**AMERICANA**

Surveyed & Platted  
 By  
**EVANS, MECHWART, HAMBLETON, & TILTON INC.**  
 CONSULTING ENGINEERS AND SURVEYORS  
 170 MILL STREET  
 GAHANNA, OHIO 43230  
 614/471-5150



By Thomas D. Sibbalds  
 Thomas D. Sibbalds  
 Registered Surveyor No. 5908

SCALE 1" = 100' January 15, 1996



**NOTE:**  
 The bearings shown hereon are based on the same meridian as the centerline of Americana Parkway (N 3°31'31" E) as shown on the plat of record in Plat Book 55, Pages 6 & 7.

TRUSS 187 857 025