

EVANS MECHWART HAMBLETON & TILTON, INC.

CONSULTING ENGINEERS — SURVEYORS
GAHANNA, OHIO

PLAT OF 1.378 ACRE TRACT
LOCATED IN SECTION 28, TOWNSHIP 12, RANGE 21
REFUGEE LANDS
CITY OF COLUMBUS, FRANKLIN COUNTY, OHIO

SCALE 1" = 60'

AUGUST 8, 1975

DEED BOOK 3429, PAGE 16

PLAT BOOK _____, PAGE _____

030

1049

1975

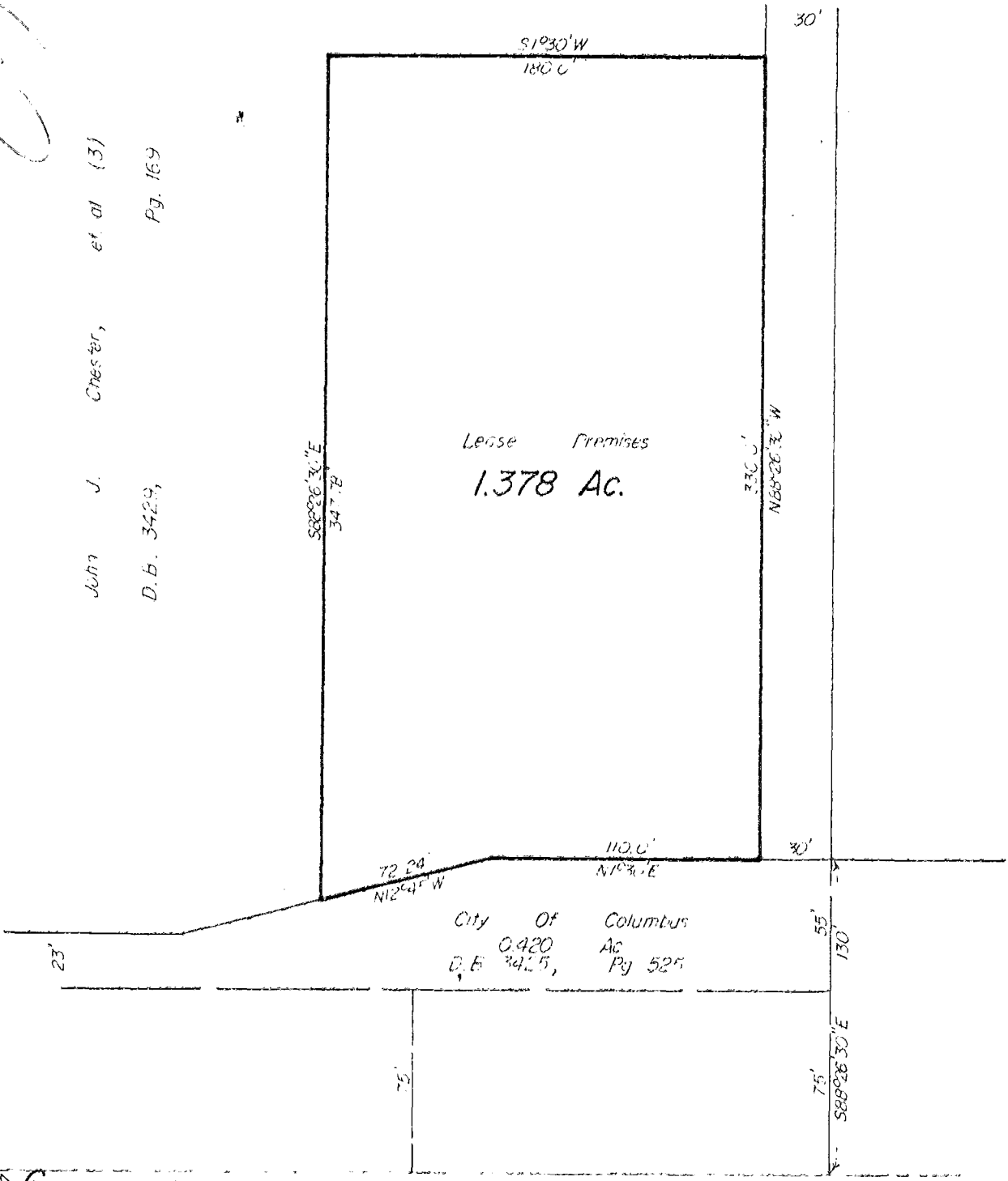
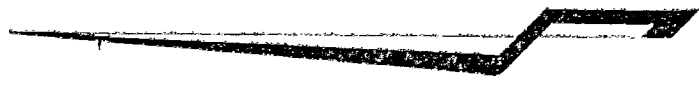
119051

120

1940

C. J. R.

John J. Chester, et al (3)
D.B. 3429, Pg. 169



Lease Premises
1.378 Ac.

City of Columbus
0.420 Ac
D.B. 3425, Pg. 525

HAMILTON ROAD (STATE ROUTE 317)

EXHIBIT "A"

EVANS MECHWART HAMBLETON & TILTON, INC.