

Surveyed & Platted
By

EVANS, MECHWART, HAMBLETON, & TILTON INC.

CONSULTING ENGINEERS AND SURVEYORS
170 MILL STREET
GAHANNA, OHIO 43230
614/471-5150

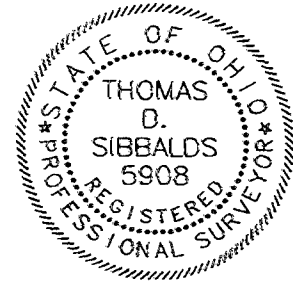
PLAT OF ACREAGE PARCEL

LOCATED IN THE NORTHWEST QUARTER OF SECTION 4, TOWNSHIP 11, RANGE 21,

CONGRESS LANDS

MADISON TOWNSHIP, FRANKLIN COUNTY, OHIO

By Thomas D. Sibbalds
Thomas D. Sibbalds
Registered Surveyor No. 5908

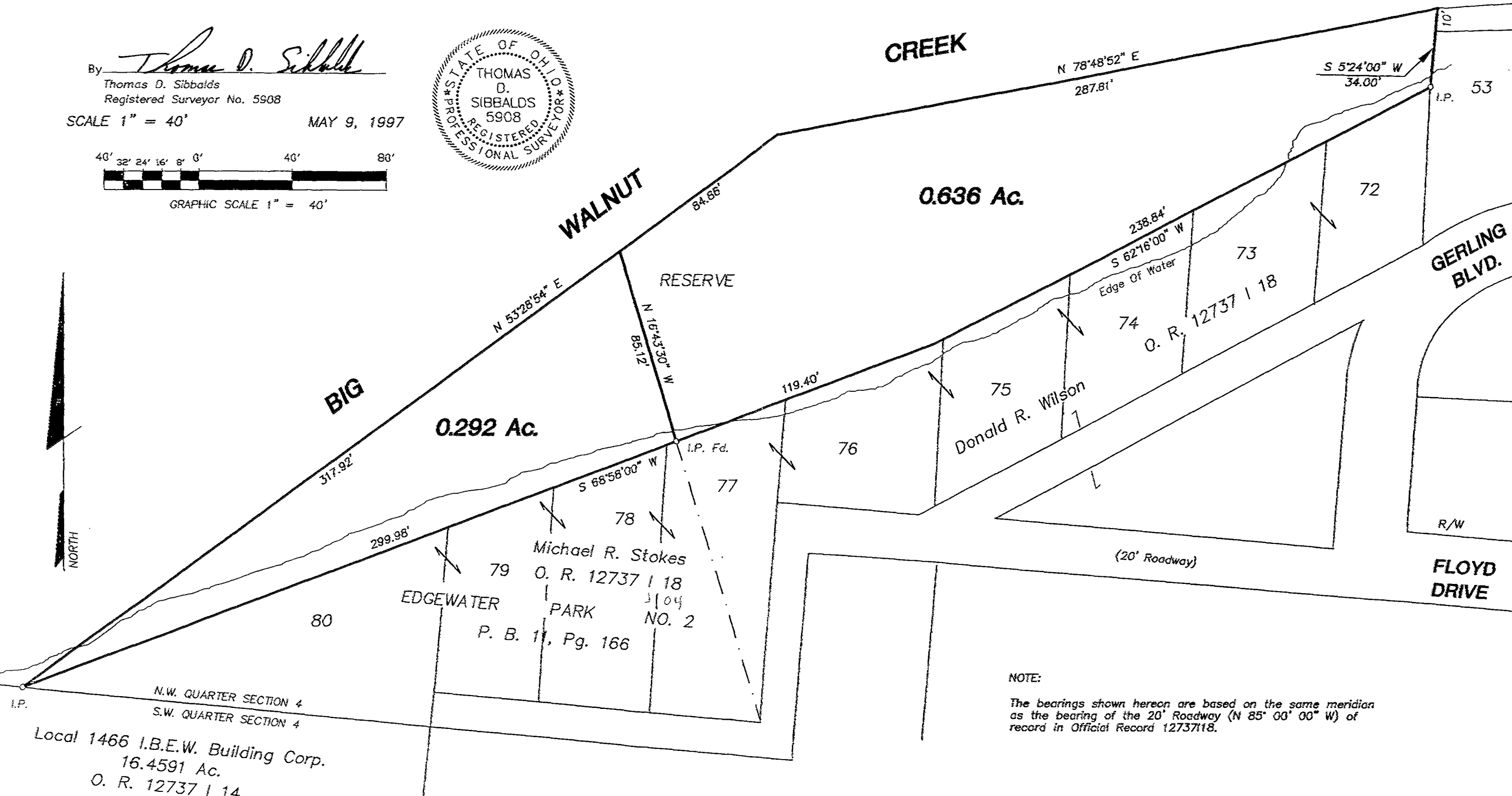


SCALE 1" = 40'

MAY 9, 1997



GRAPHIC SCALE 1" = 40'



NOTE:

The bearings shown hereon are based on the same meridian as the bearing of the 20' Roadway (N 85° 00' 00" W) of record in Official Record 12737118.

N.W. QUARTER SECTION 4
S.W. QUARTER SECTION 4
Local 1466 I.B.E.W. Building Corp.
16.4591 Ac.
O. R. 12737 | 14