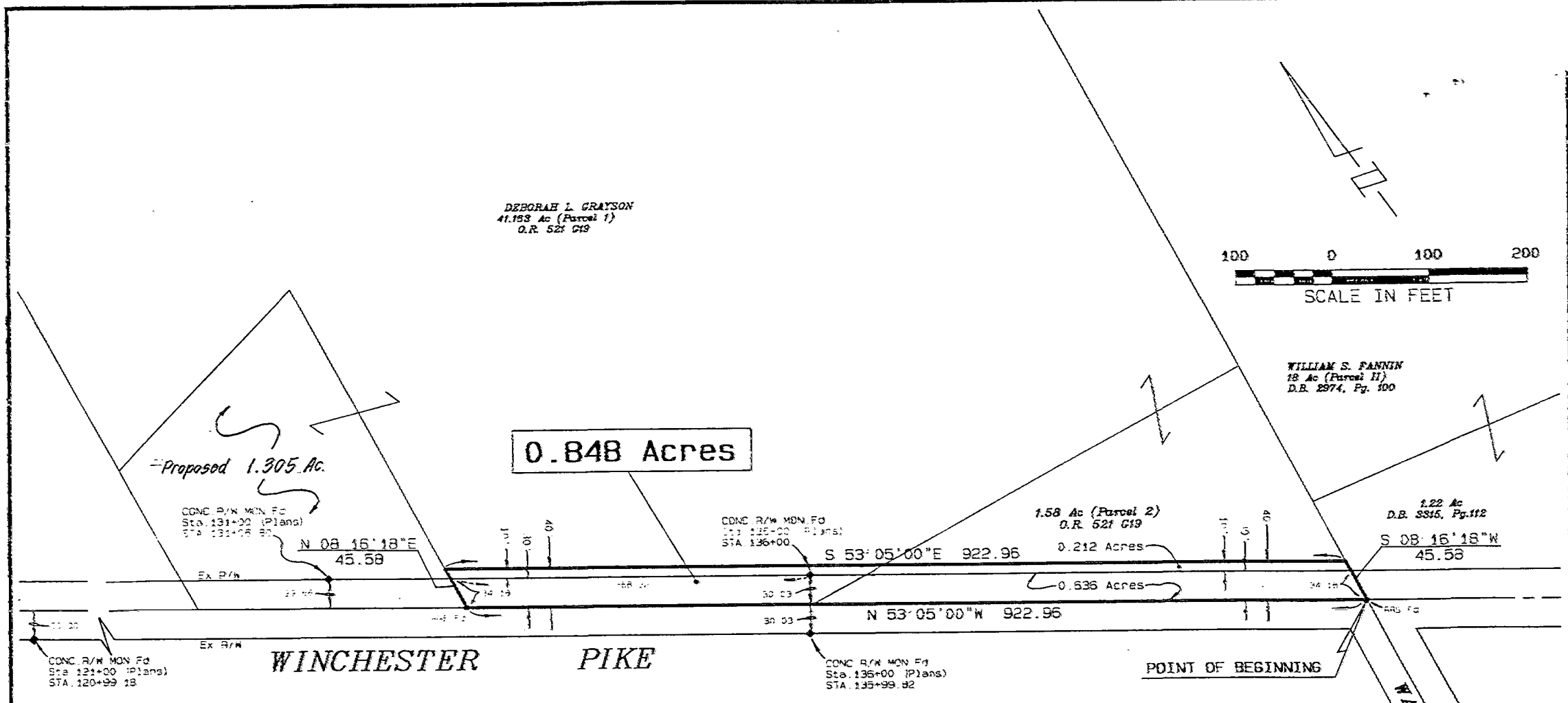


85356950

MADISON TWP.
O-41-B



0.848 Acres

Proposed 1.305 Ac.

CONC. R/W MON. Fd
Sta. 131+00 (Plans)
Sta. 131+05.80

CONC. R/W MON. Fd
Sta. 135+00 (Plans)
Sta. 136+00

1.58 Ac (Parcel 2)
O.R. 521 G19

1.22 Ac
O.R. 3315, Pg. 112

CONC. R/W MON. Fd
Sta. 121+00 (Plans)
Sta. 120+99.18


CONC. R/W MON. Fd
Sta. 136+00 (Plans)
Sta. 135+99.82

Exhibit of
0.848 ACRES

Being Part of
SECTION 5, TOWNSHIP 11, RANGE 21
MATHEWS SURVEY
City of Columbus, Ohio

SCALE: 1" = 100' DATE: January, 1994

Prepared By:

 R.D. ZANDE & ASSOCIATES, INC.
1237 Dublin Road Columbus, Ohio 43215
614-456-4383

NOTE: The bearings shown hereon are based upon the bearing of N 53° 05' W for the centerline of WINCHESTER PIKE as delineated on the right-of-way plans of WINCHESTER PIKE, S.H. 49, Sec. F., E-1, D-1, and D-2 on file at the Franklin County Engineers Office.

110 - A PS 6096