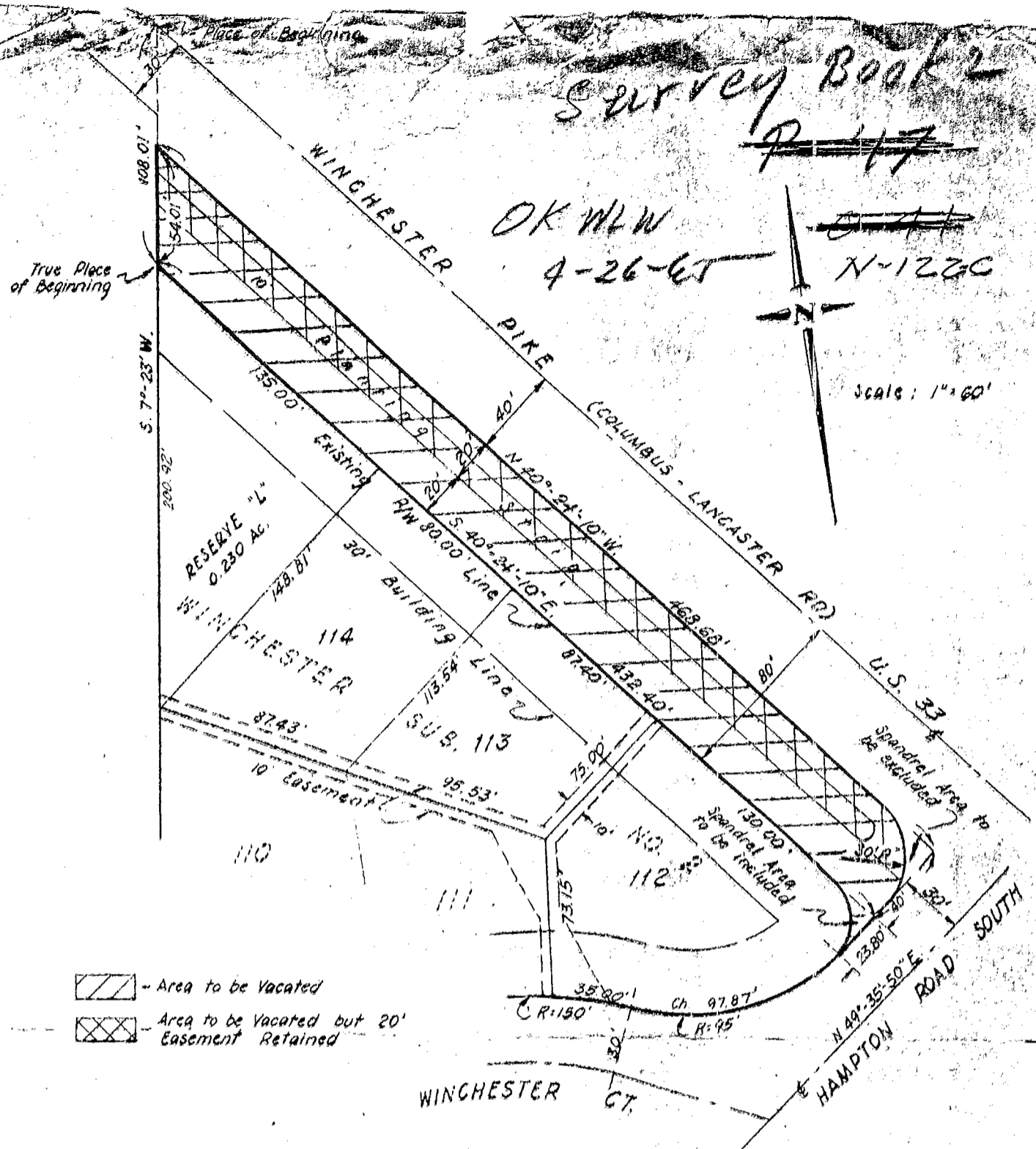


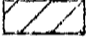
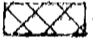
Survey Book 2
~~7-17~~

OK NW
 4-26-63

N-122C

Scale: 1" = 60'



-  - Area to be Vacated
-  - Area to be Vacated but 20' Easement Retained

VACATION OF PORTION OF
 WINCHESTER PIKE

SCALE: 1" = 60' JAN. 1963

PREPARED BY
 THE JENNINGS - LAWRENCE CO.
 CIVIL ENGINEERS & SURVEYORS
 COLUMBUS, OHIO

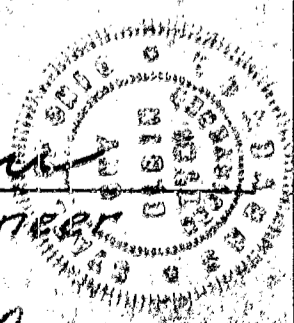
By *Thomas R. Wilson*
 Registered Engineer

EXHIBIT "A"

N-122-C

Approved
 Date 5-5-64

Guy Elbin
 Franklin County Engineer



Granted May 5, 1964

Road Record #19

Approved

ate 5-5-64

on in this
Lyman R. ...
...