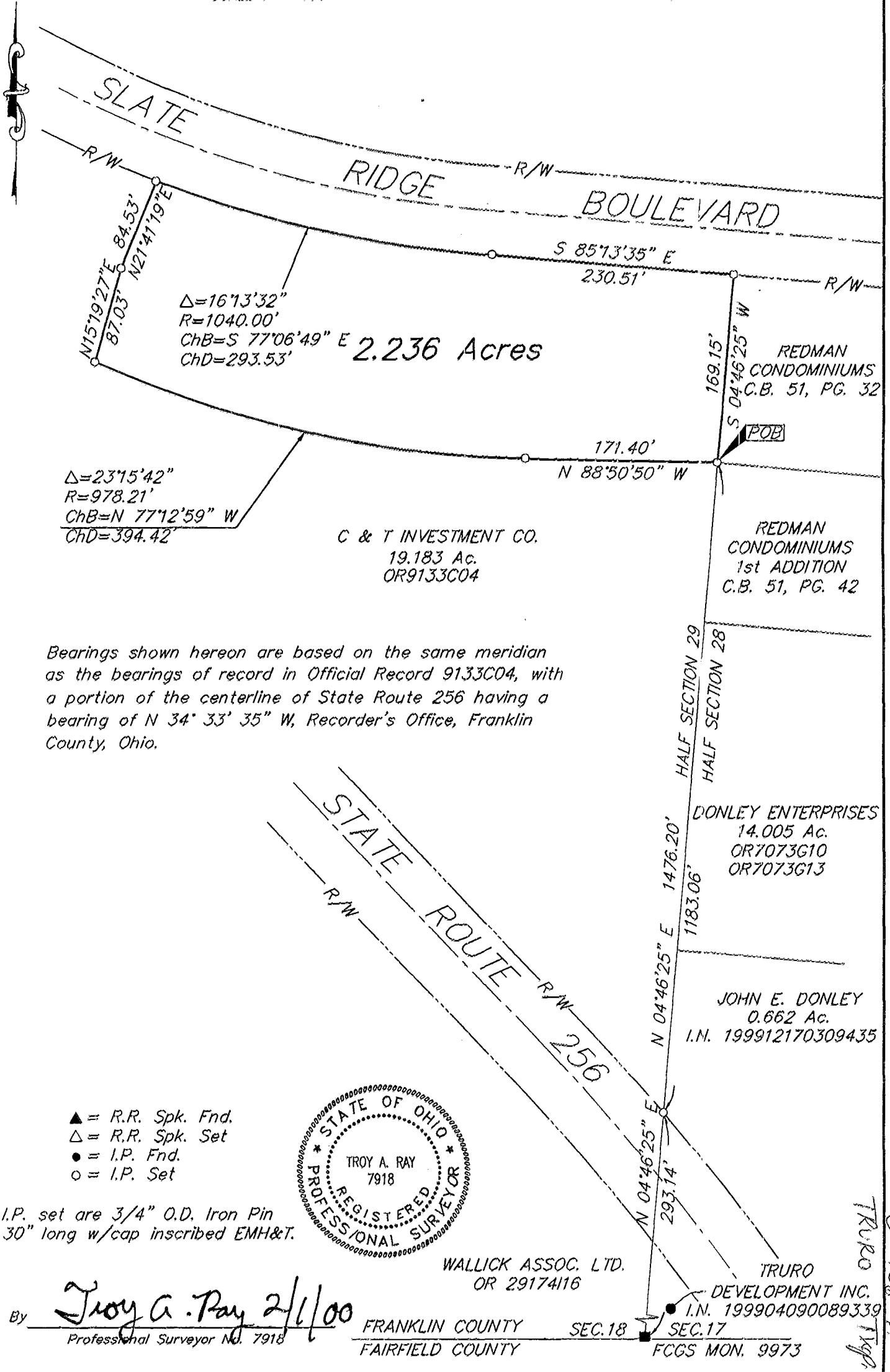


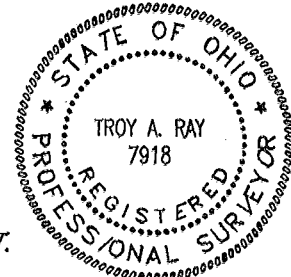
SCALE 1" = 100'

JANUARY 31, 2000



Bearings shown hereon are based on the same meridian as the bearings of record in Official Record 9133C04, with a portion of the centerline of State Route 256 having a bearing of N 34° 33' 35" W, Recorder's Office, Franklin County, Ohio.

- ▲ = R.R. Spk. Fnd.
- △ = R.R. Spk. Set
- = I.P. Fnd.
- = I.P. Set



I.P. set are 3/4" O.D. Iron Pin 30" long w/cap inscribed EMH&T.

By Troy A. Ray 2/1/00  
 Professional Surveyor No. 7918

WALLICK ASSOC. LTD.  
 OR 29174116

FRANKLIN COUNTY SEC. 18  
 FAIRFIELD COUNTY SEC. 17  
 TRURO DEVELOPMENT INC. I.N. 199904090089339  
 FCGS MON. 9973

TRURO  
 0-106-H

SERVER-4\SURVEY\PROJECT\19981368\DWG\81368BV2.DWG - 0 XREFS: - PLOTTED BY TRAY - January 31, 2000 - 1:37 PM