

N-82-BB



19935-1157

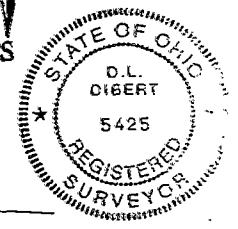
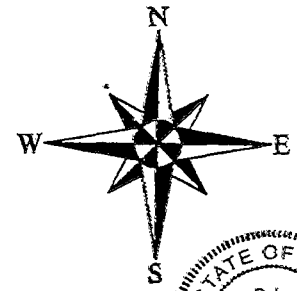
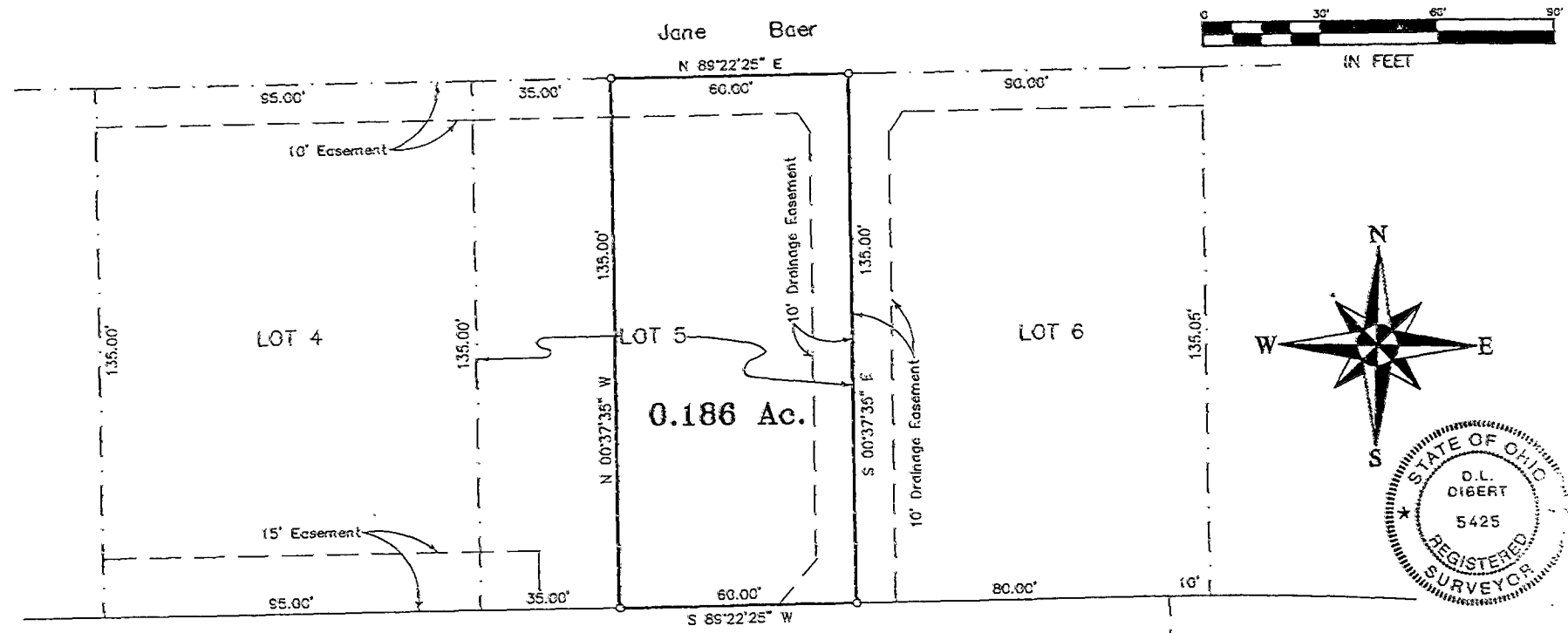
SURVEY OF 0.186 ACRE TRACT  
BEING PART OF LOT NO. 5 OF  
"JORDAN CROSSING"  
CITY OF REYNOLDSBURG, FRANKLIN COUNTY, OHIO

SCALE 1" = 30'

JUNE 1, 1994

IRON PIN

RECORD REFERENCES P.B. 75, Pg. 3



BASIS OF BEARINGS. The bearings shown hereon are based on the same meridian as the bearings shown on the recorded plat of Jordan Crossing, of record in Plat Book 75, Page 3, Recorder's Office, Franklin County, Ohio.

JORDAN CROSSING (50')

E.M.H.&T. INC.  
By *Orval L. Digert*  
Professional Surveyor No. 5425