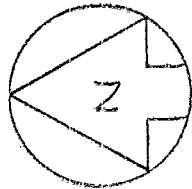
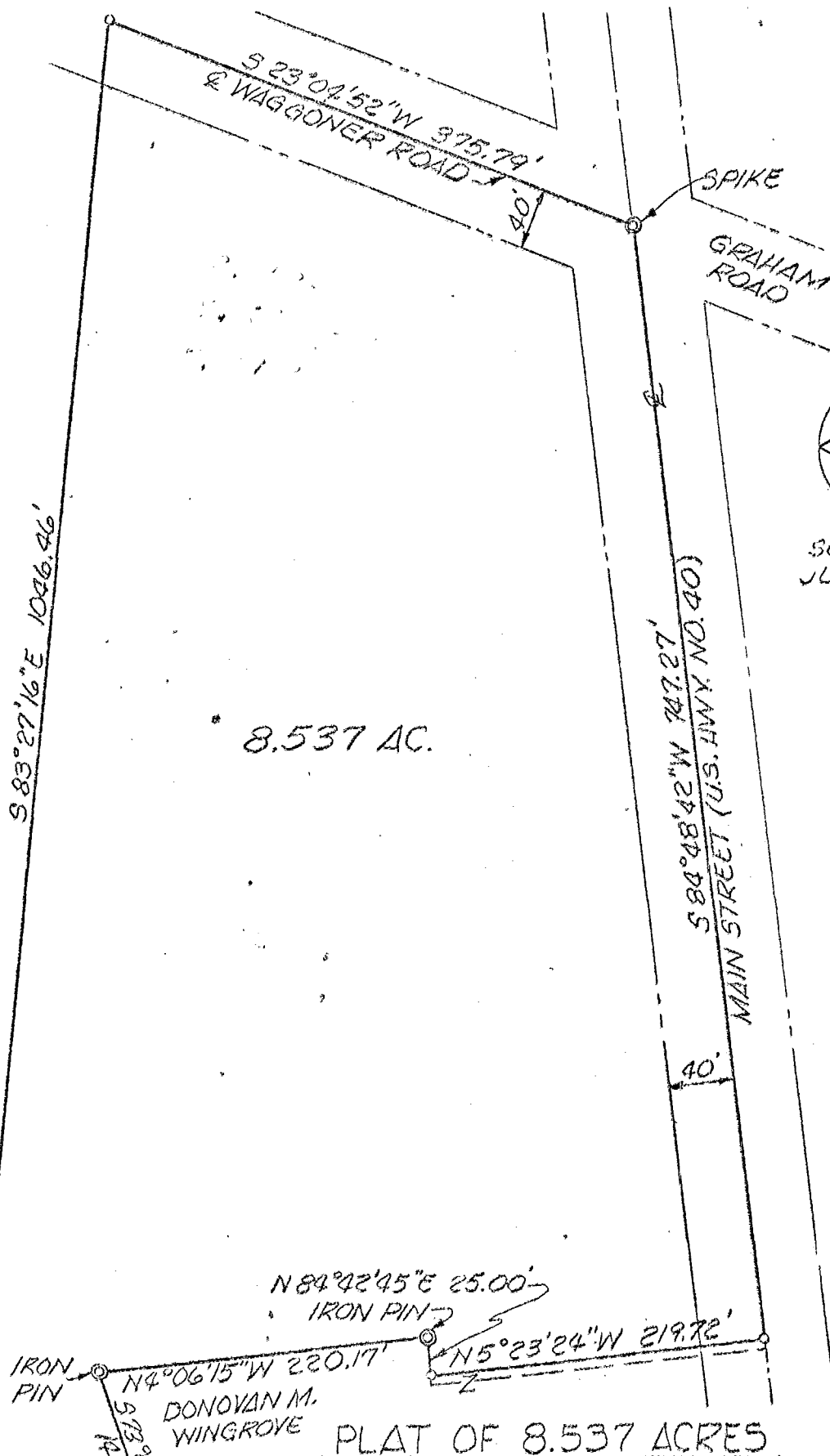


188257125
1882571105

PLAT PREPARED BY
BURGESS & NIPLE, LIMITED
CONSULTING ENGINEERS
COLUMBUS, OHIO
FOR

N-83

AMERICAN HOUSING GUILD-OLIO INC.



SCALE: 1"=100'
JULY 19, 1974

8.537 AC.

S 83° 27' 16" E 1046.46'

S 23° 04' 52" W 375.79'
& WAGGONER ROAD

SPIKE

GRAHAM ROAD

S 84° 48' 42" W 747.27'
MAIN STREET (U.S. HWY. NO. 40)

N 84° 42' 45" E 25.00'
IRON PIN

IRON PIN N 4° 06' 15" W 220.17'

N 5° 23' 24" W 219.72'

DONOVAN M.
WINGROVE

PLAT OF 8.537 ACRES

CITY OF REYNOLDSBURG, FRANKLIN COUNTY, OHIO,
SITUATED IN HALF SEC. 8, SEC. 7, T. 16 N. - R. 20 W.,
REFUGEE LANDS.

IRON PIN N 0° 50' 23" E 134.00'

PART OF 63.577 ACRES, CONVEYED TO AMERICAN HOUSING
GUILD-OLIO INC., BY DEED, OF RECORD IN DEED BOOK
3258, PAGE 332, FRANKLIN COUNTY OHIO, RECORDER'S
OFFICE.

CLOYDE H.
RUSSELL

SURVEYED BY BURGESS & NIPLE, LIMITED

Harold H. Glassburn
REG. SURVEYOR NO. 4309 OHIO

030

120

N-83