

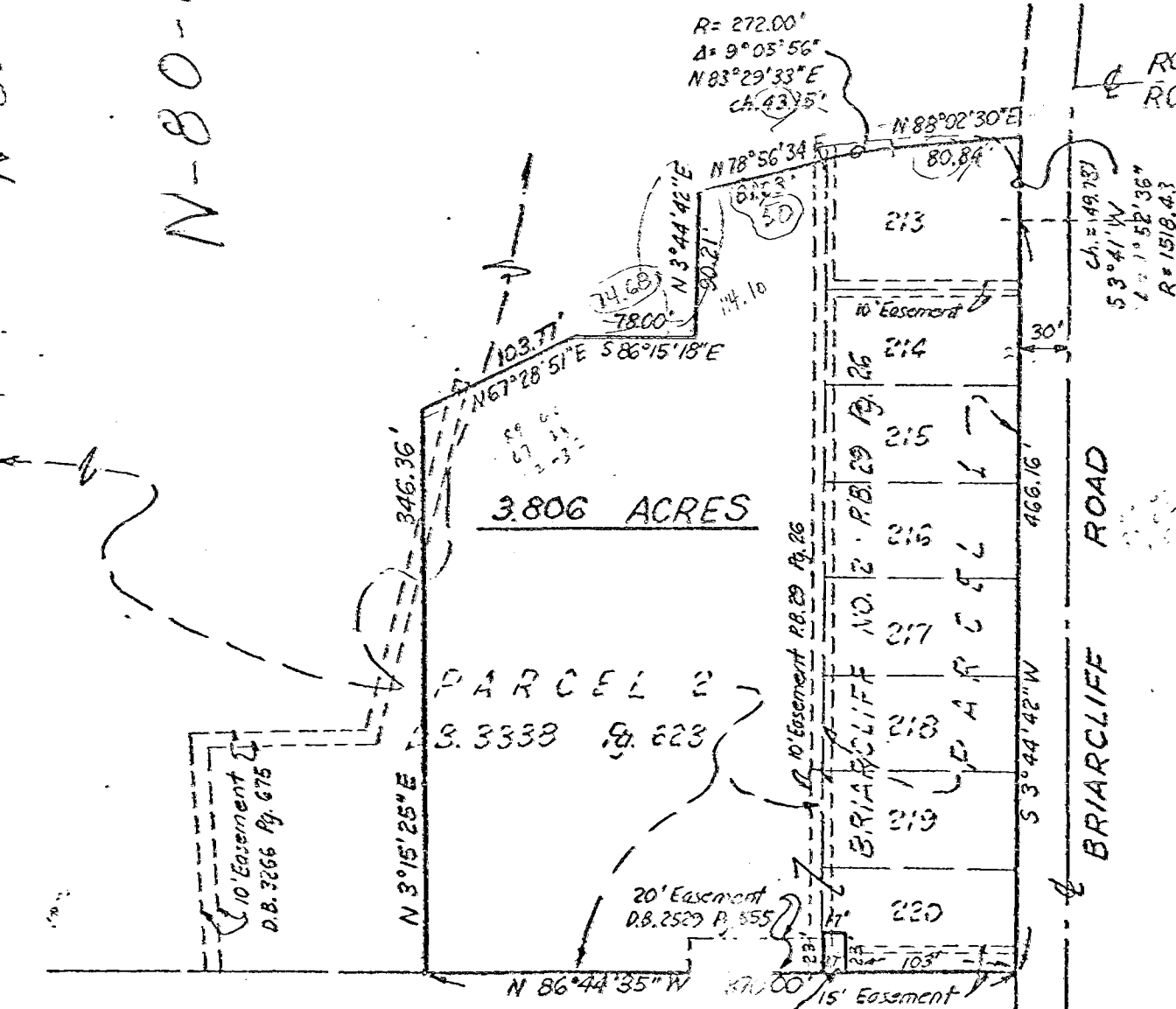
N-80-B

N-80-B

R = 272.00'
Δ = 9° 05' 56"
N 83° 29' 33" E
CA. 43.15'

ROUNDELAY ROAD SOUTH

RECEIVED
NOV - 3 1975



3.806 ACRES

PARCEL 2
3.3338 SQ. 623

BRIARCLIFF NO. 2 - P.B. 29 Pg. 26
PARCEL 1

391 SQ. FT. TRACT CONVEYED TO
THE OHIO FUEL GAS CO. OF
RECORDED IN D.B. 2079 Pg. 630
(Now owned by Columbia Gas, Ohio)

49.70
3026.80
0-56-15

3.806 ACRE TRACT
HALF SECTION 18, SECTION 12
TOWNSHIP 12, RANGE 21
REFUGEE LANDS
CITY OF REYNOLDSBURG, OHIO



r. d. zande & associates, ltd.
consulting engineers
COURT HOUSE SQUARE, 503 SOUTH HIGH ST.
COLUMBUS, OHIO 43215 614/221-9880

SCALE 1" = 100'

OCTOBER, 1975

103
112
120