

187607100
187357100

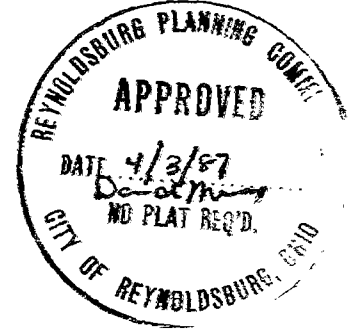
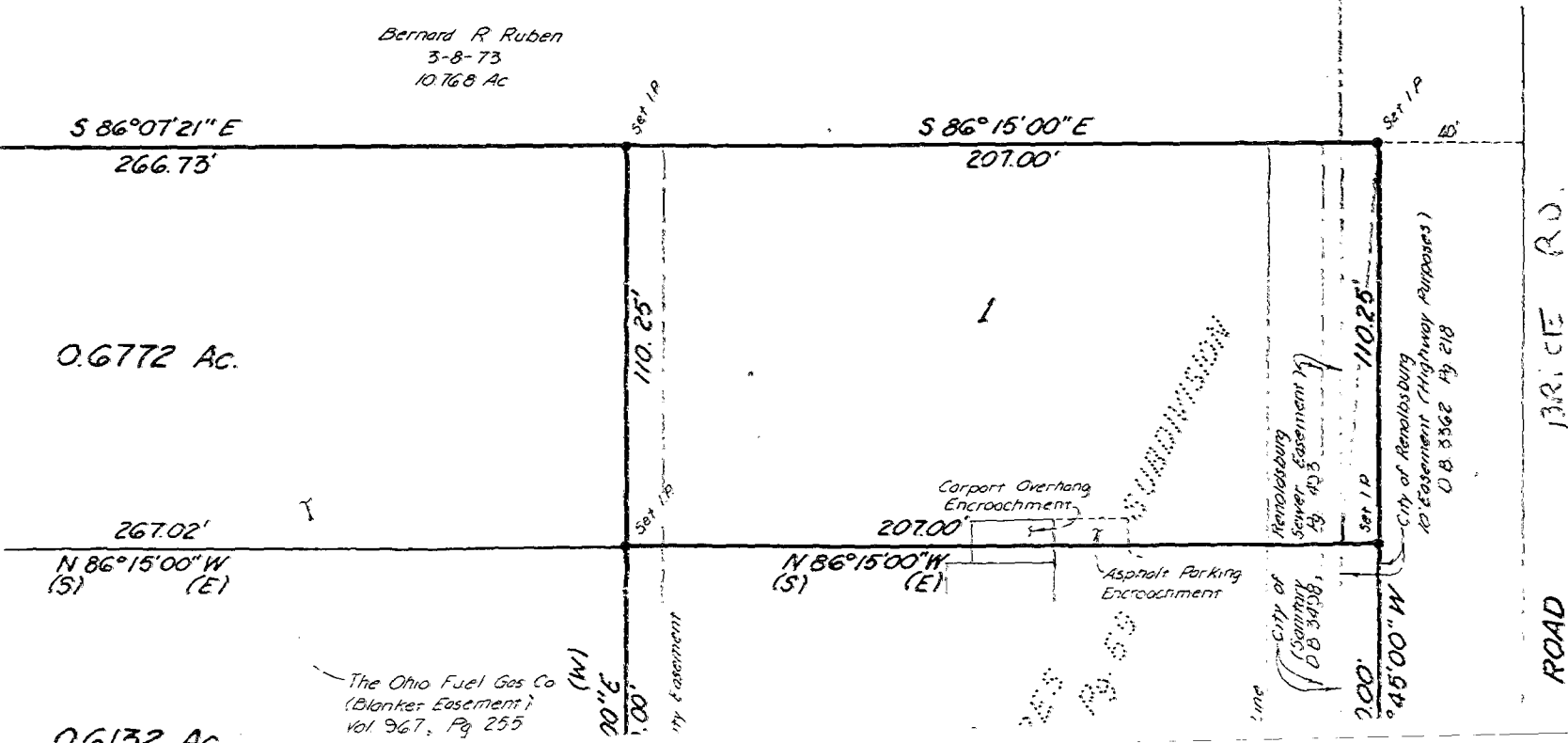
SURVEY of LOTS 1, 2 and 3 of WILHELM ACRE SUBDIVISION and LOT SPLIT of 1.012 ACRE TRAC for JOHN E. WOLF and GERALD T. YOUNG

SITUATED IN THE STATE OF OHIO, COUNTY OF FRANKLIN, CITY OF REYNOLDSBURG,
SECTION 14, TOWNSHIP 12, RANGE 21, REFUGEE LANDS

Bernard R. Ruben
3-8-73
10.768 Ac

4-2-87
This survey was
prepared by Bishop
and Associates Inc.

John Wolf



The Ohio Fuel Gas Co
(Blanket Easement)
Vol 967, Pg 255

0.6132 Ac