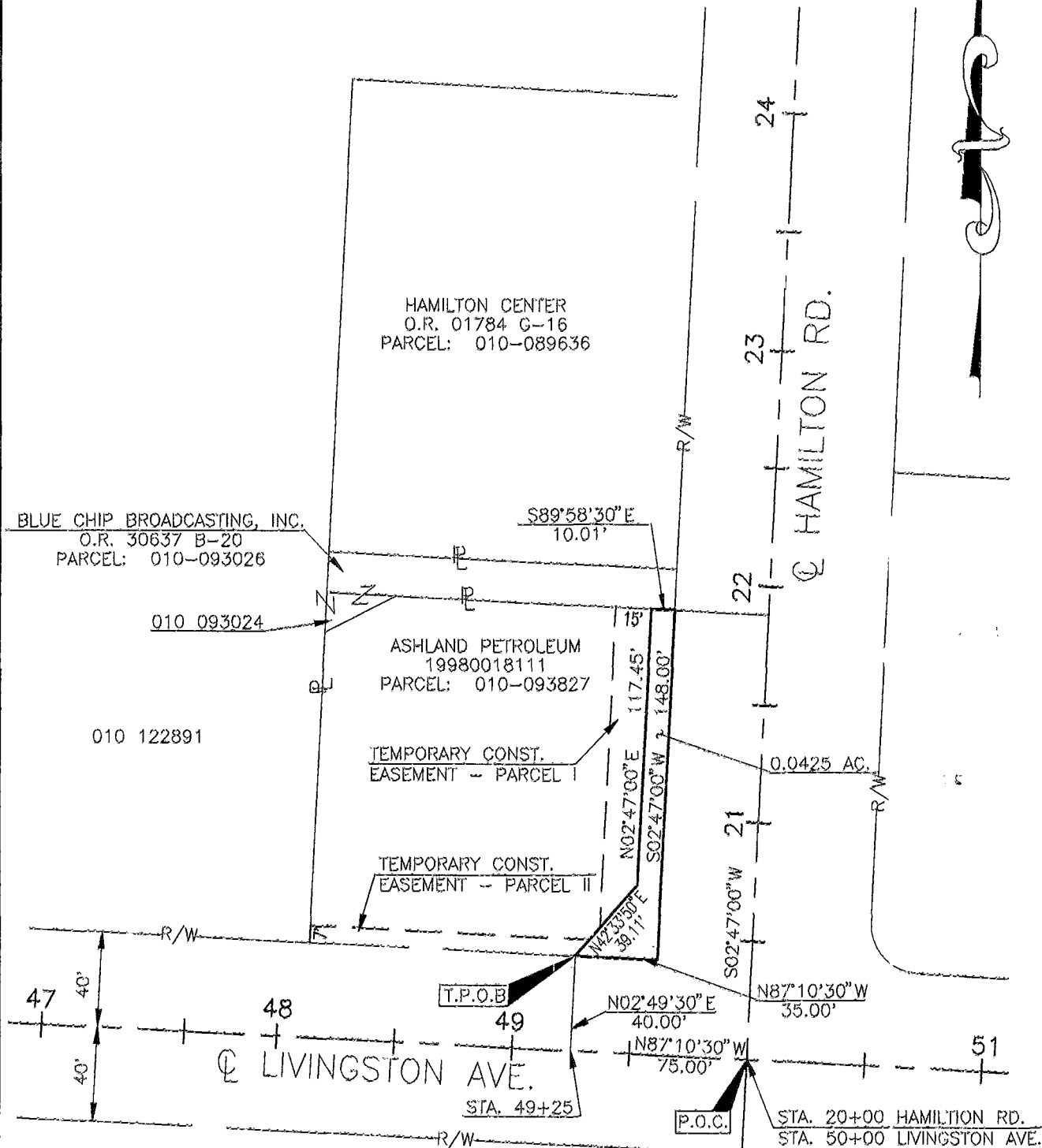
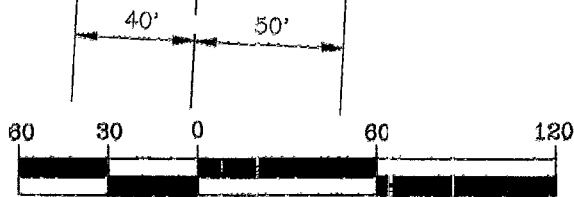


EXHIBIT B

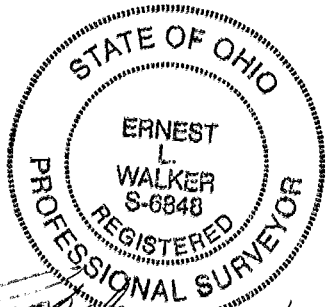


BASIS OF BEARINGS:

This description was prepared from a centerline survey of by Paul K. Moore & Associates, for Dynotec, Inc. in August, 1996 for Group 9 intersection Improvements, C.I.P. No. 068, and recorded documents in the Office of the Franklin County Recorder. The Basis of Bearings is the centerline of Livingston Avenue, S 87°10'30" E., as established by the above survey.



GRAPHIC SCALE
SCALE 1" = 60'



PROFESSIONAL SURVEYOR NO. S-6848 DATE 7/16/99

**GROUP 9 INTERSECTION IMPROVEMENTS
C.I.P. NO. 068**

DYNOTEC, INC.

2700 E. DUBLIN-GRANVILLE ROAD, SUITE 6
COLUMBUS, OHIO 43231

DATE: 06/02/98

DRAWN: KJS

SCALE: 1" = 60'

DWG NO. W08

CHECKED: ELW

8610798
25