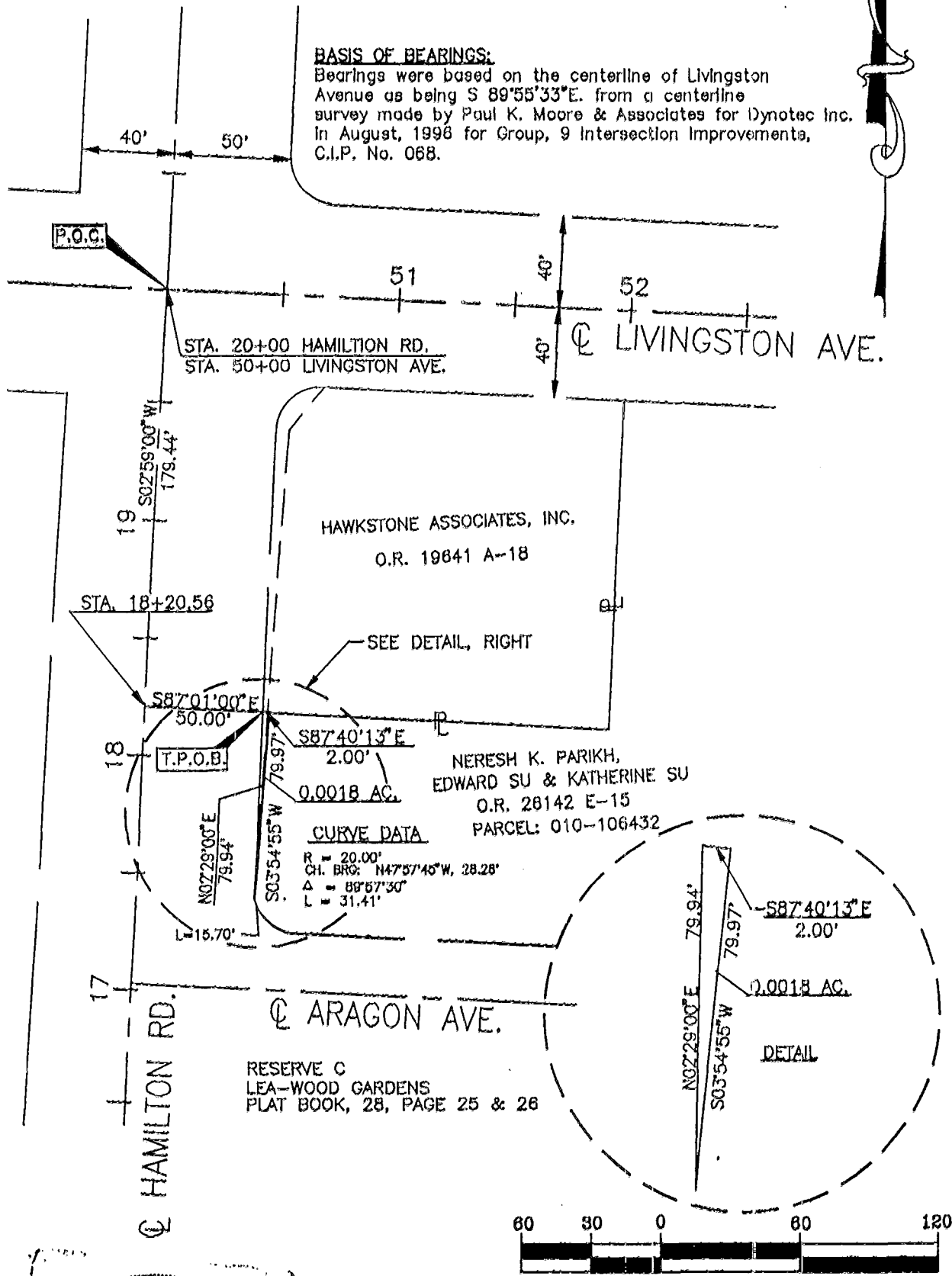
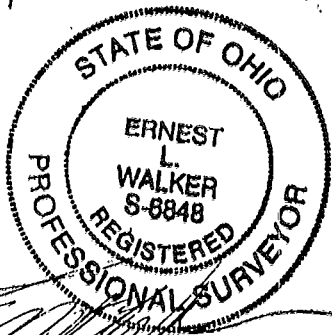


EXHIBIT B



BASIS OF BEARINGS:

Bearings were based on the centerline of Livingston Avenue as being S 89°55'33"E. from a centerline survey made by Paul K. Moore & Associates for Dynotec Inc. In August, 1998 for Group, 9 Intersection Improvements, C.I.P. No. 068.



PROFESSIONAL SURVEYOR NO. S-8848 DATE 8/11/78

**GROUP 9 INTERSECTION IMPROVEMENTS
C.I.P. NO. 068**

DYNOTEC, INC.
2700 E. DUBLIN-GRANVILLE ROAD, SUITE 8
COLUMBUS, OHIO 43231

DATE: 06/02/98

DRAWN: KJS

SCALE: 1" = 60'

DWG NO. WDB

CHECKED: ELW

86 107 075