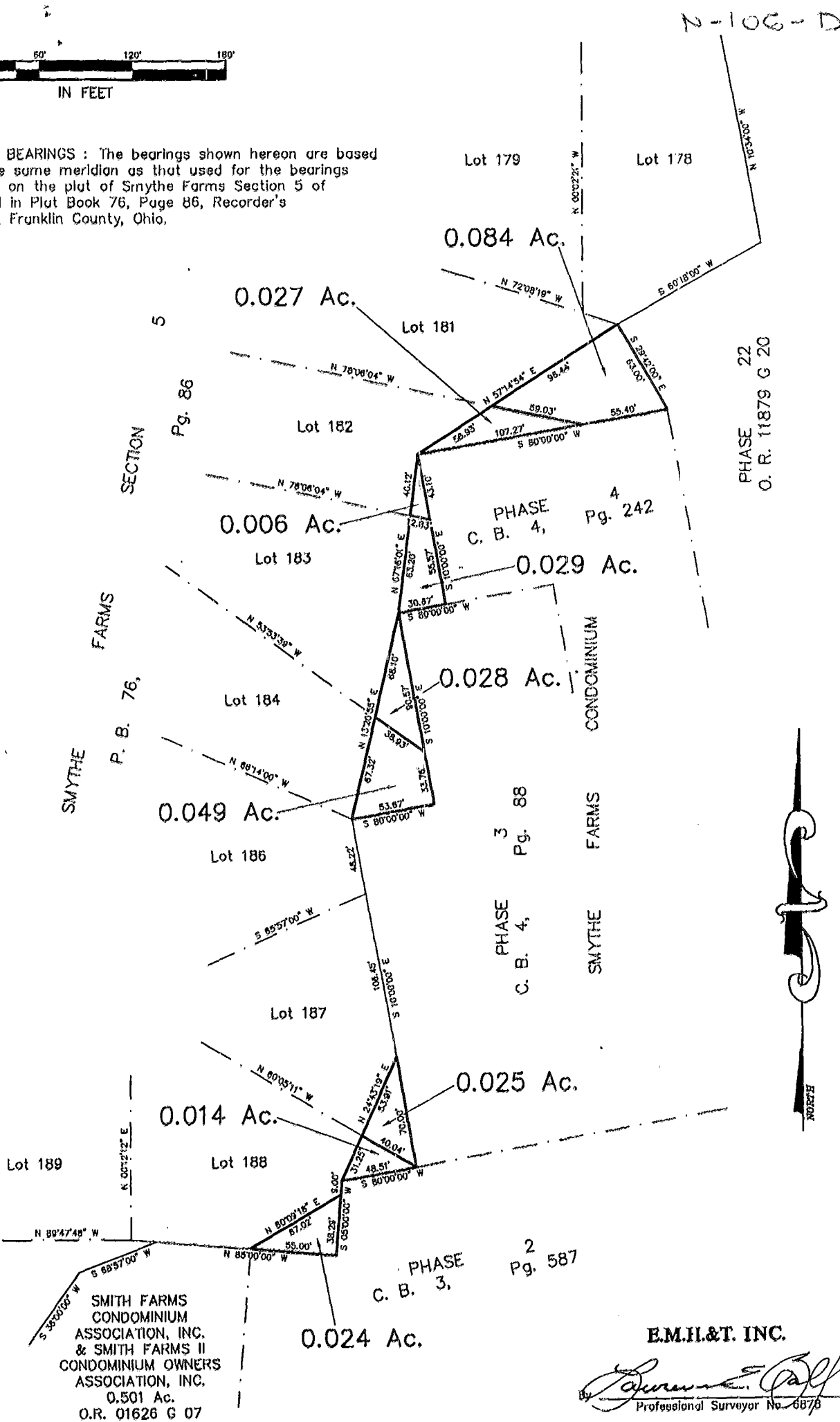




BASIS OF BEARINGS : The bearings shown hereon are based on the same meridian as that used for the bearings shown on the plat of Smythe Farms Section 5 of record in Plat Book 76, Page 86, Recorder's Office, Franklin County, Ohio.



SMITH FARMS  
 CONDOMINIUM  
 ASSOCIATION, INC.  
 & SMITH FARMS II  
 CONDOMINIUM OWNERS  
 ASSOCIATION, INC.  
 0.501 Ac.  
 O.R. 01626 G 07

PHASE 2  
 C. B. 3, Pg. 587

**E.M.H.&T. INC.**

*James E. Call*  
 Professional Surveyor No. 6876

N-106-D  
 18735 7150  
 18735 7175