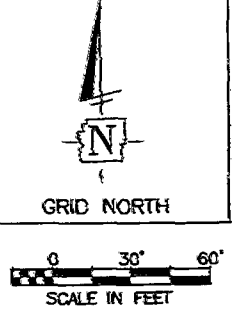
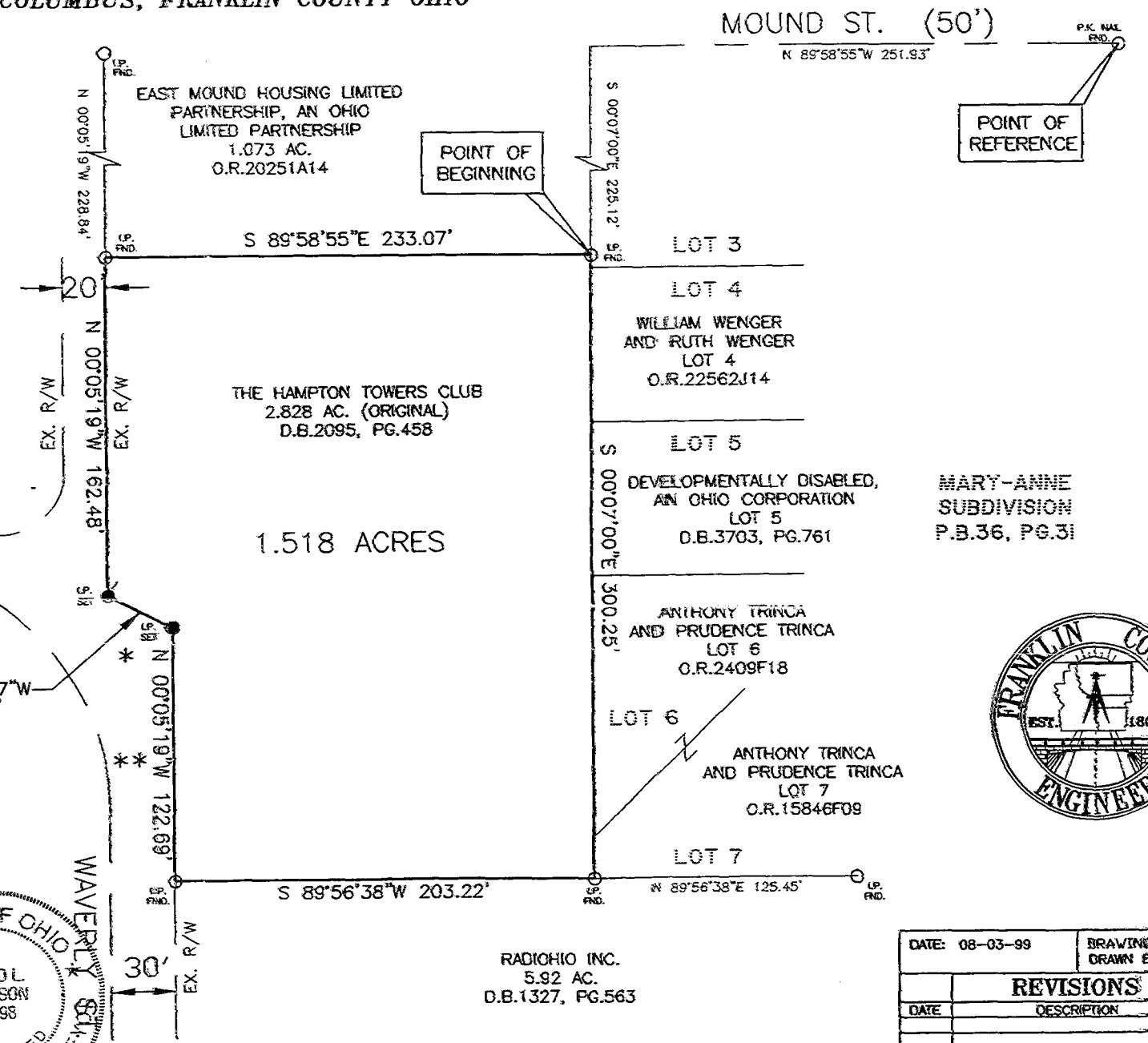


SURVEY OF A 1.518 ACRE TRACT, SECTION 18, TOWNSHIP 12 NORTH, RANGE 21 WEST, REFUGEE LANDS CITY OF COLUMBUS, FRANKLIN COUNTY OHIO



NOTES:
 * 0.021 ACRE DROP, CITY OF COLUMBUS, D.B. 2322, PAGE 251
 ** 0.069 ACRE DROP, CITY OF COLUMBUS, D.B. 2331, PAGE 325
 I.P.'S SET ARE 5/8" REBAR WITH YELLOW PLASTIC CAPS STAMPED "FRANKLIN COUNTY ENGINEER"



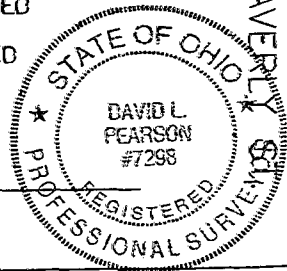
BASIS OF BEARINGS:

BEARINGS ARE BASED ON THE BEARING (S00°07'00"E) ALONG THE WESTERLY LINE OF MARY-ANNE SUBDIVISION AS RECORDED IN PLAT BOOK 36, PAGE 31, RECORDERS OFFICE, FRANKLIN COUNTY, OHIO.

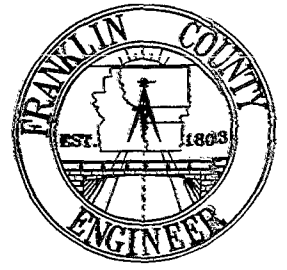
THIS PLAT WAS PREPARED FROM AN ACTUAL FIELD SURVEY PERFORMED BY THE FRANKLIN COUNTY ENGINEER'S OFFICE, ALONG WITH PUBLIC RECORDS ON FILE IN THE FRANKLIN COUNTY RECORDER'S OFFICE AND THE FRANKLIN COUNTY ENGINEER'S OFFICE

David L. Pearson
 DAVID L. PEARSON
 OHIO REGISTERED SURVEYOR NO. 7298

8-4-99
 DATE



RADIOHIO INC.
 5.92 AC.
 D.B. 1327, PG. 563



DATE: 08-03-99		DRAWING: 010-015328	
		DRAWN BY: MJR	
REVISIONS			
DATE	DESCRIPTION	BY	